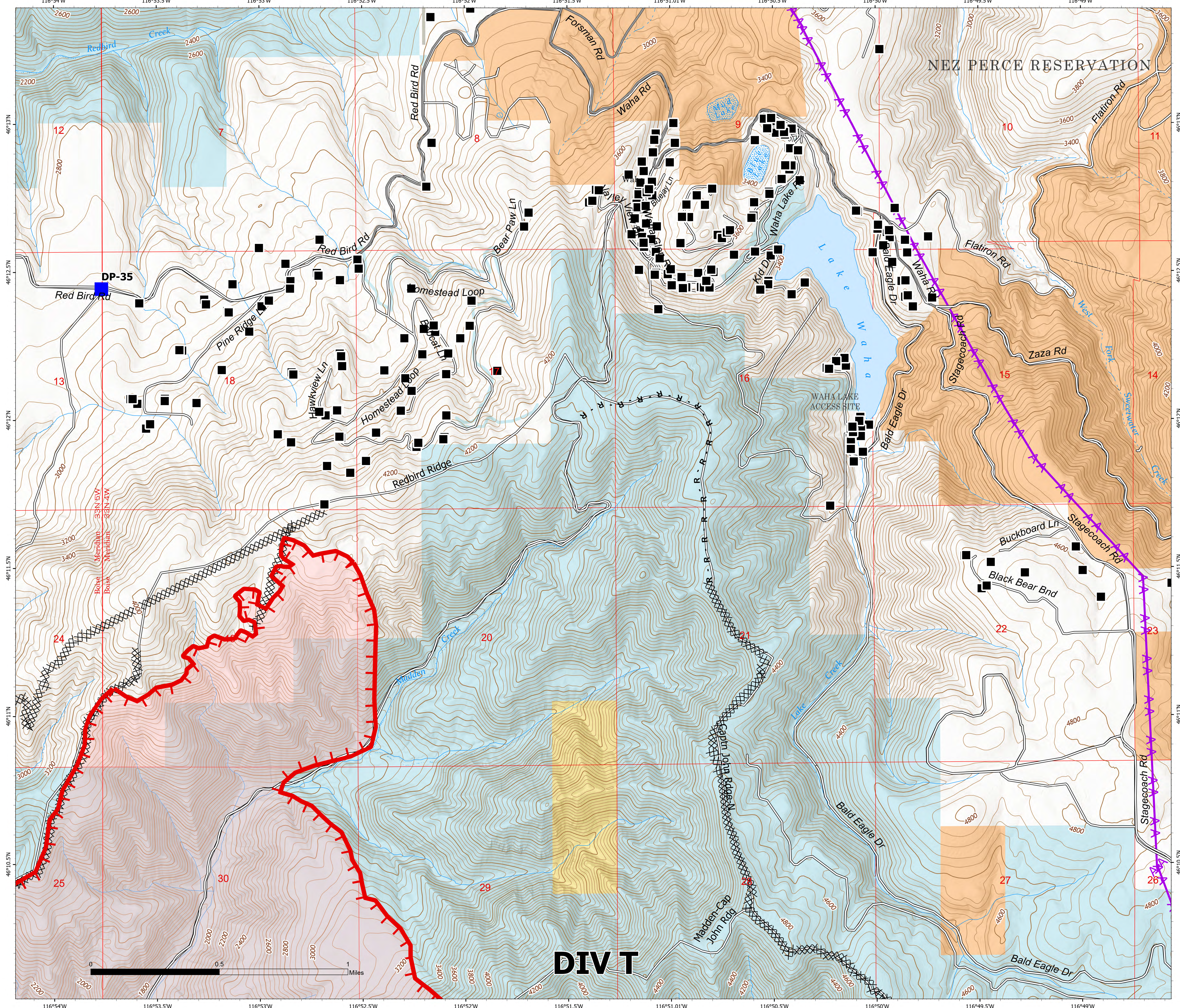


# Structure Lake Waha

Snake River Complex  
ID-CMS-000604  
7/11/2021

54,407 acres at 7/10/2021 @ 1936  
Acres from IR & Imagery

- Drop Point
- Completed Dozer Line
- Completed Road as Line
- Fire Edge
- Wildfire Daily Fire Perimeter
- State Lands
- Bureau of Land Management Lands
- American Indian Reservation Land
- Structures
- Transmission Line



**DIV T**