

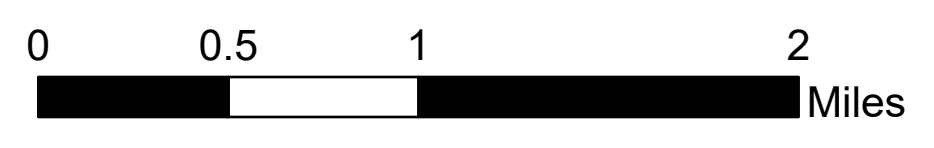
# Operations Shovel Creek

Snake River Complex

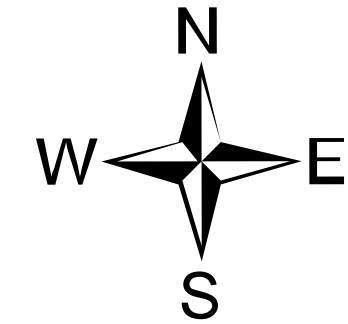
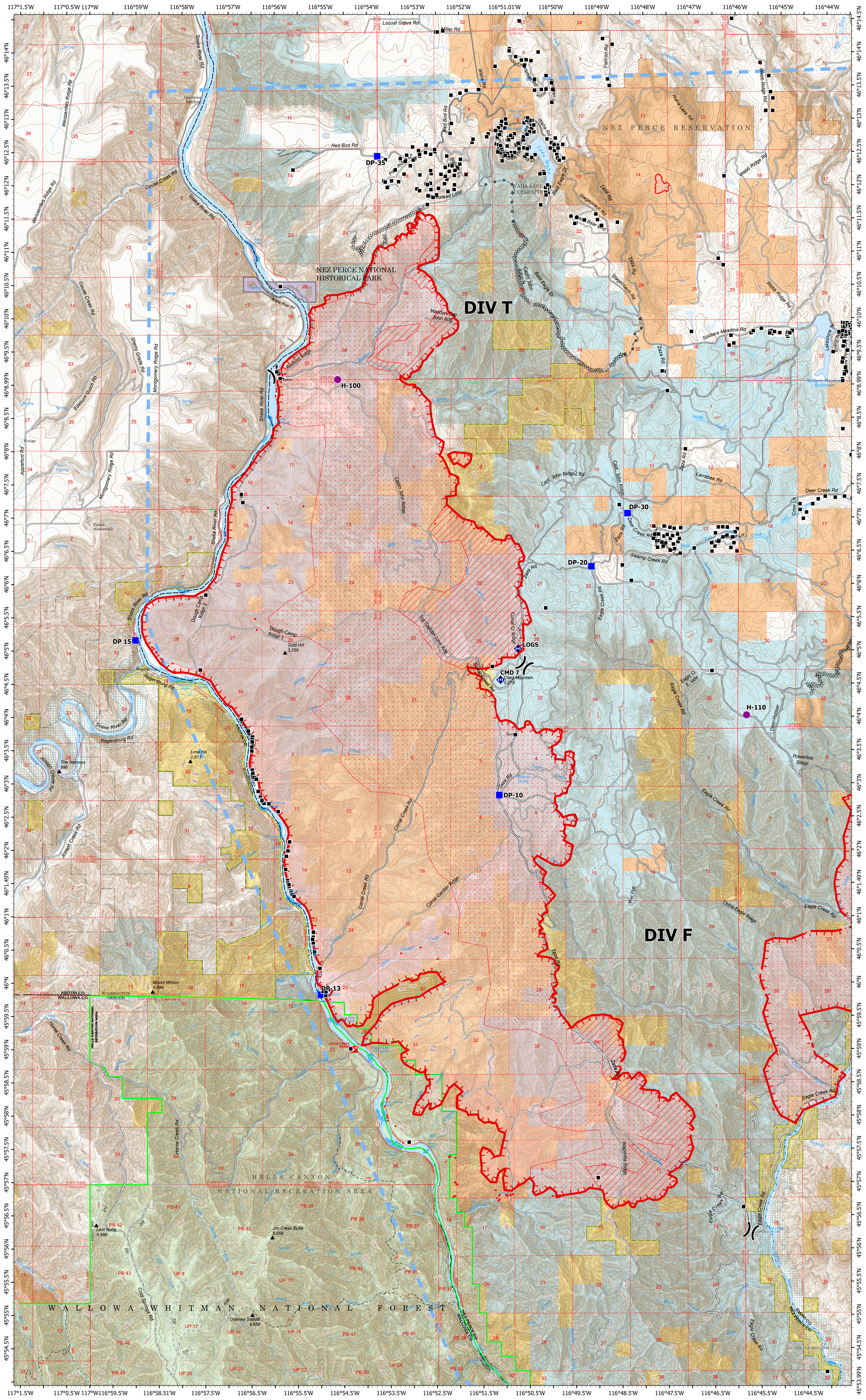
ID-CMS-000604

7/11/2021

54,407 acres at 7/10/2021 @ 1936  
Acres from IR & Imagery



- Hellspot
- Division Break
- Drop Point
- Repeater
- IR Isolated Heat Source
- Completed Dozer Line
- Completed Road as Line
- Temporary Flight Restriction
- Fire Edge
- Wildfire Daily Fire Perimeter
- IR Intense Heat
- IR Scattered Heat
- Structures
- State Public Lands
- Other State Lands
- U.S. Fish & Wildlife Service Lands
- Bureau of Land Management Lands
- National Park Service Lands
- American Indian Reservation Land



NR Team 4  
7/11/2021 0603  
North American 1983 Datum, Lat/Long  
Grid