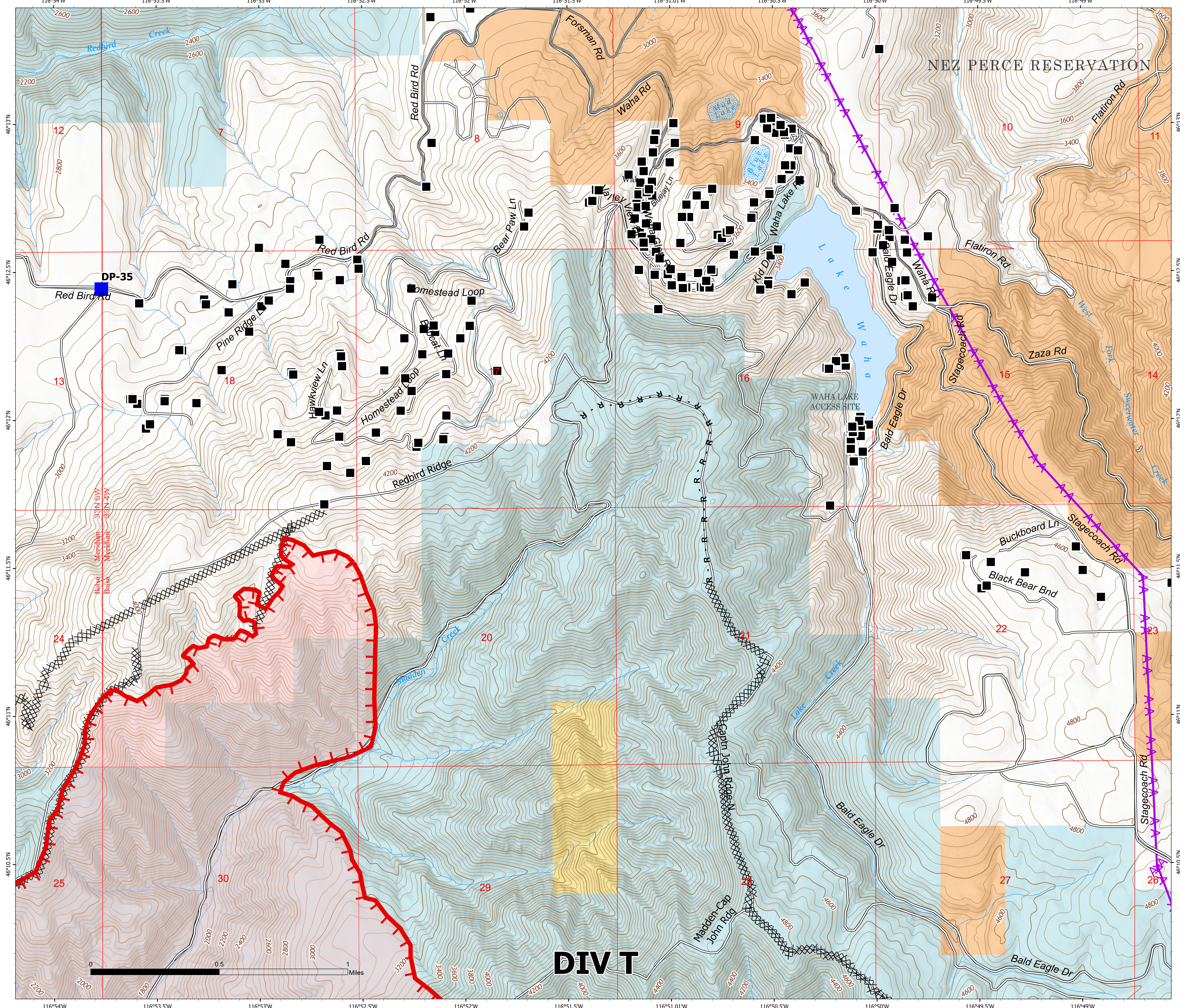


Structure Lake Waha

Snake River Complex
ID-CMS-000604
7/11/2021

54,407 acres at 7/10/2021 @ 1936
Acres from IR & Imagery

- Drop Point
- Completed Dozer Line
- Completed Road as Line
- Fire Edge
- Wildfire Daily Fire Perimeter
- State Lands
- Bureau of Land Management Lands
- American Indian Reservation Land
- Structures
- Transmission Line



NR Team 4
7/11/2021 0603

North American 1983 Datum, Lat/Long
Grid

