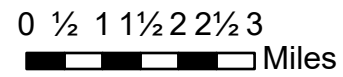


Transportation

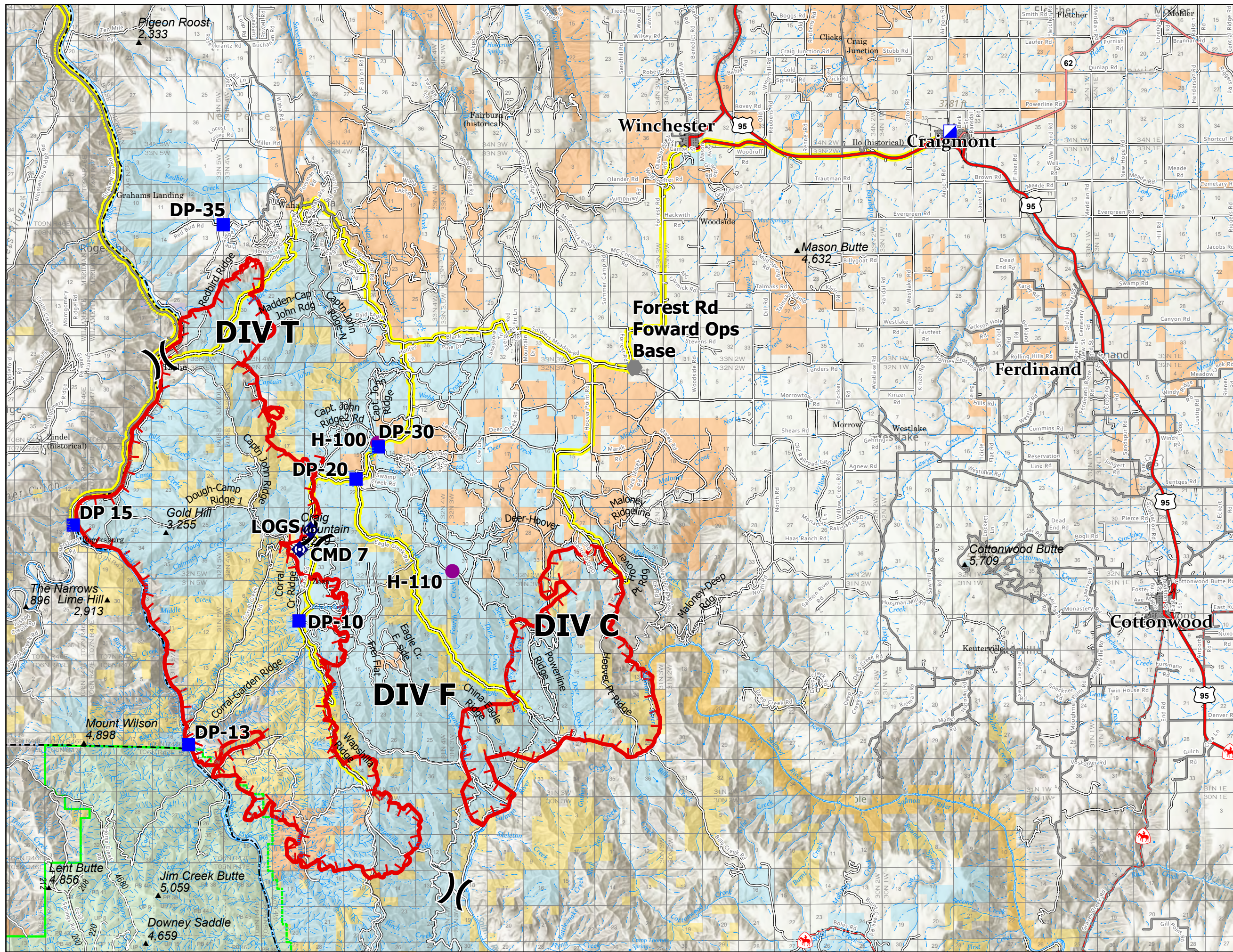
Snake River Complex

ID-CMS-000604

7/11/2021



- Helispot
-) Division Break
- Incident Command Post
- Drop Point
- Other
- Ⓜ Repeater
- Fire Edge
- Snake River Complex Primary Access Routes
- National Designated Trail
- US Primary Route
- US Secondary Route
- State Secondary Route
- Dirt Road
- Unimproved Road
- Paved Roads
- Dirt (Not Paved)
- Railroad
- Bureau of Land Management Wilderness
- Forest Service Land
- State Public Lands
- Other State Lands
- U.S. Fish & Wildlife Service Lands
- Bureau of Land Management Lands
- National Park Service Lands
- Private; Local Government; Undesignated
- Tribe Parcels
- Craig_Mtn_GoodRidges_Clip
- CraigMtn_Roads



NR Team 4
7/11/2021 1526



North American 1983 Datum. LatLong Grid