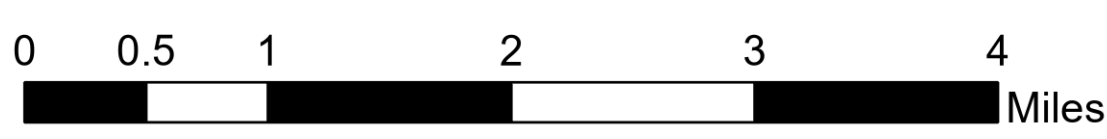
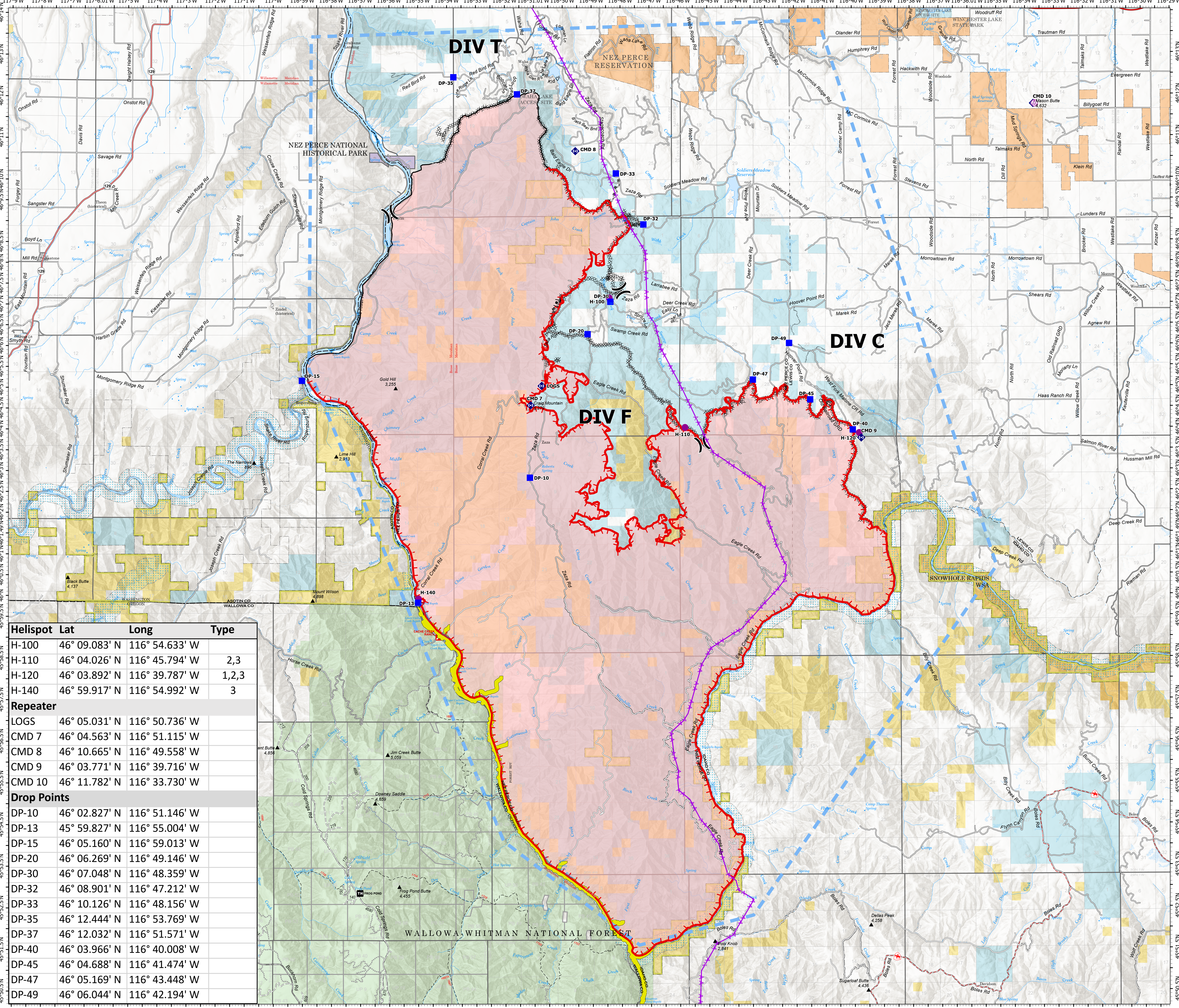


Air Ops
 Snake River Complex
 ID-CMS-000604
 7/16/2021
 102,866 acres at 7/15/2021 @ 2045
 Acres from IR and Imagery



- ✦ Transmission Lines
- ⊙ Towers
- ⊙ Helispot
- ⊗ Division Break
- Drop Point
- ⊙ Repeater
- ⊙ Completed Burnout
- ⊙ Completed Dozer Line
- ⊙ Completed Road as Line
- ⊙ Temporary Flight Restriction
- ⊙ Fire Edge
- ⊙ Contained Line
- ⊙ Wildfire Daily Fire Perimeter
- ⊙ American Indian Lands
- ⊙ State Lands
- ⊙ U.S. Fish & Wildlife Service Lands
- ⊙ Bureau of Land Management Lands
- ⊙ National Park Service Lands
- ⊙ CraigMtn_RetardantAvoidance



Helispot	Lat	Long	Type
H-100	46° 09.083' N	116° 54.633' W	
H-110	46° 04.026' N	116° 45.794' W	2,3
H-120	46° 03.892' N	116° 39.787' W	1,2,3
H-140	46° 59.917' N	116° 54.992' W	3

Repeater	Lat	Long	Type
LOGS	46° 05.031' N	116° 50.736' W	
CMD 7	46° 04.563' N	116° 51.115' W	
CMD 8	46° 10.665' N	116° 49.558' W	
CMD 9	46° 03.771' N	116° 39.716' W	
CMD 10	46° 11.782' N	116° 33.730' W	

Drop Points	Lat	Long	Type
DP-10	46° 02.827' N	116° 51.146' W	
DP-13	45° 59.827' N	116° 55.004' W	
DP-15	46° 05.160' N	116° 59.013' W	
DP-20	46° 06.269' N	116° 49.146' W	
DP-30	46° 07.048' N	116° 48.359' W	
DP-32	46° 08.901' N	116° 47.212' W	
DP-33	46° 10.126' N	116° 48.156' W	
DP-35	46° 12.444' N	116° 53.769' W	
DP-37	46° 12.032' N	116° 51.571' W	
DP-40	46° 03.966' N	116° 40.008' W	
DP-45	46° 04.688' N	116° 41.474' W	
DP-47	46° 05.169' N	116° 43.448' W	
DP-49	46° 06.044' N	116° 42.194' W	



NR Team 4
 7/16/2021 0708
 North American 1983 Datum, Lat/Long
 Grid

