

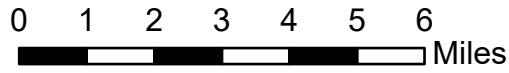
Transportation

Snake River Complex

ID-CMS-000604

7/16/2021

102,866 acres at 7/15/2021 @ 2045



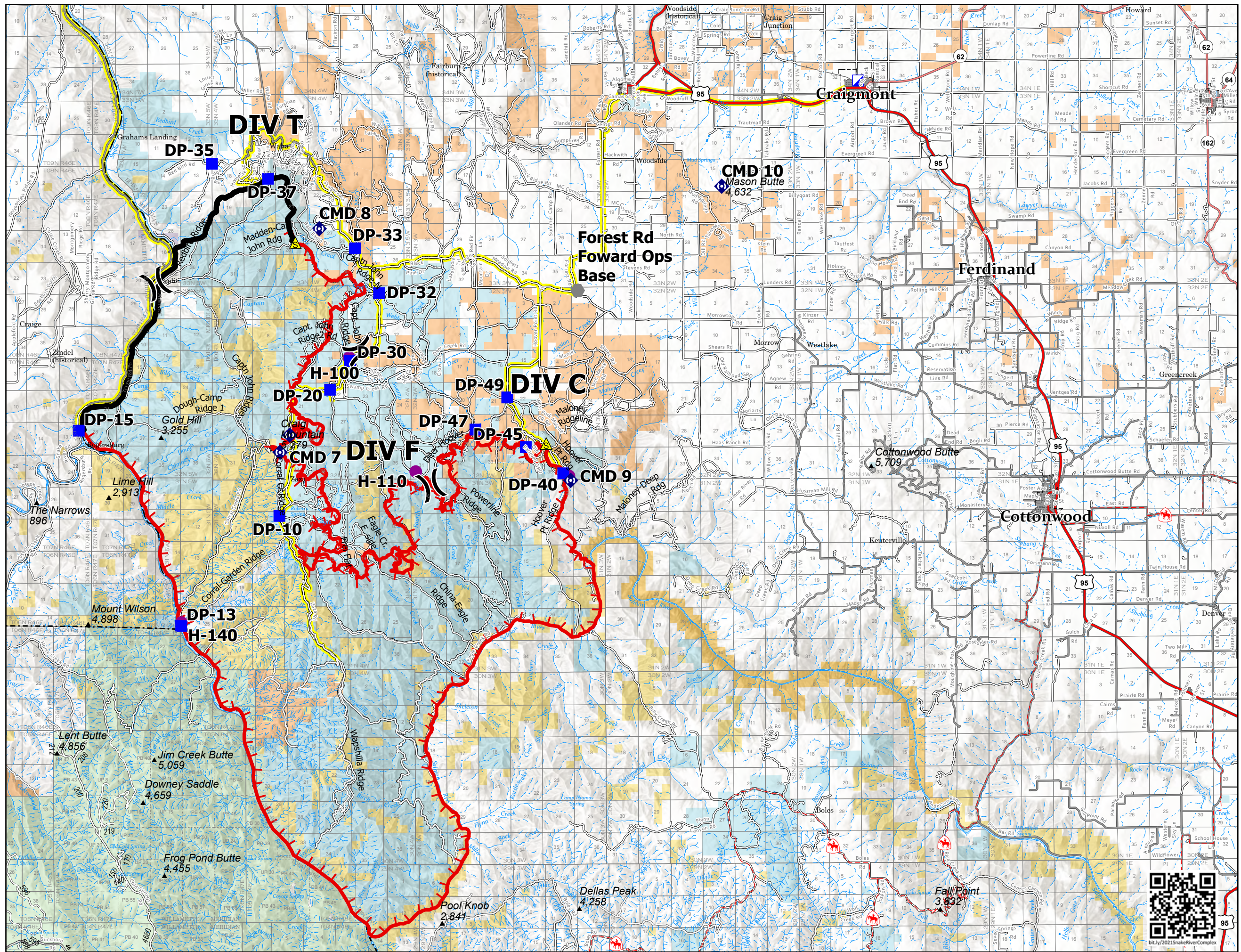
- Fire Edge
- Contained Line
- Snake River Complex Primary Access Routes
- Paved Roads
- Dirt (Not Paved)
- Gravel Road
- Dirt Road
- Unimproved Road
- State Secondary Route
- State Route Not Paved
- US Primary Route
- US Secondary Route
- National Designated Trail
- CraigMtn_Roads
- Craig_Mtn_GoodRidges_Clip
- Helispot
- Division Break
- Incident Command Post
- Drop Point
- Other
- Repeater
- Safety Zone
- Railroad
- Tribal Lands
- Bureau of Land Management Wilderness
- Forest Service Land
- State Public Lands
- Other State Lands
- U.S. Fish & Wildlife Service Lands
- Bureau of Land Management Lands
- National Park Service Lands
- Other Lands, including Private



NR Team 4
7/16/2021 0432



North American 1983 Datum. LatLong Grid



ht.ly/2021SnakeRiverComplex