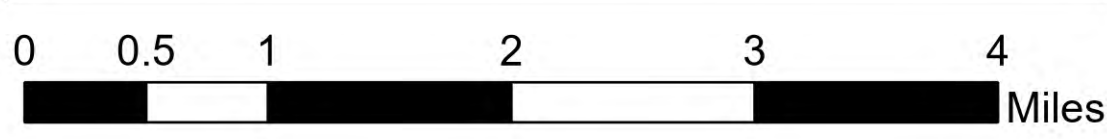
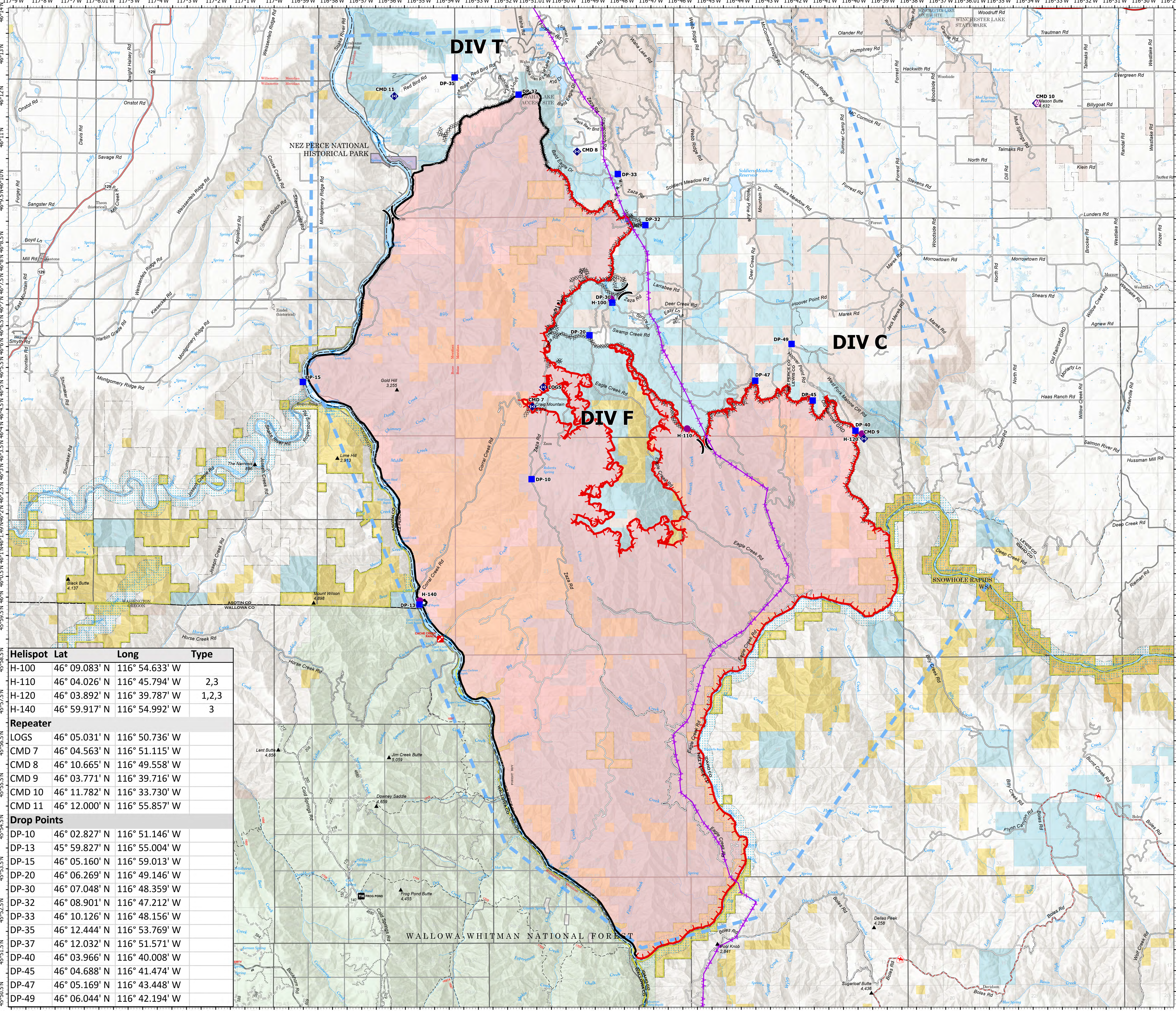


**Air Ops**  
 Snake River Complex  
 ID-CMS-000604  
 7/17/2021  
 103,907 acres at 7/16/2021 @ 2205  
 Acres from IR and Imagery



- Transmission Lines
- Towers
- Helispot
- Division Break
- Drop Point
- Repeater
- Completed Burnout
- Completed Dozer Line
- Completed Road as Line
- Temporary Flight Restriction
- Fire Edge
- Contained Line
- Wildfire Daily Fire Perimeter
- Tribal Lands
- State Lands
- U.S. Fish & Wildlife Service Lands
- Bureau of Land Management Lands
- National Park Service Lands
- Forest Service Land
- CraigMtn\_RetardantAvoidance



Helispot	Lat	Long	Type
H-100	46° 09.083' N	116° 54.633' W	
H-110	46° 04.026' N	116° 45.794' W	2,3
H-120	46° 03.892' N	116° 39.787' W	1,2,3
H-140	46° 59.917' N	116° 54.992' W	3

Repeater	Lat	Long
LOGS	46° 05.031' N	116° 50.736' W
CMD 7	46° 04.563' N	116° 51.115' W
CMD 8	46° 10.665' N	116° 49.558' W
CMD 9	46° 03.771' N	116° 39.716' W
CMD 10	46° 11.782' N	116° 33.730' W
CMD 11	46° 12.000' N	116° 55.857' W

Drop Points	Lat	Long
DP-10	46° 02.827' N	116° 51.146' W
DP-13	45° 59.827' N	116° 55.004' W
DP-15	46° 05.160' N	116° 59.013' W
DP-20	46° 06.269' N	116° 49.146' W
DP-30	46° 07.048' N	116° 48.359' W
DP-32	46° 08.901' N	116° 47.212' W
DP-33	46° 10.126' N	116° 48.156' W
DP-35	46° 12.444' N	116° 53.769' W
DP-37	46° 12.032' N	116° 51.571' W
DP-40	46° 03.966' N	116° 40.008' W
DP-45	46° 04.688' N	116° 41.474' W
DP-47	46° 05.169' N	116° 43.448' W
DP-49	46° 06.044' N	116° 42.194' W



NR Team 4  
 7/17/2021 0444  
 North American 1983 Datum, Lat/Long  
 Grid

