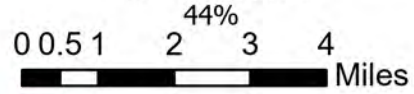


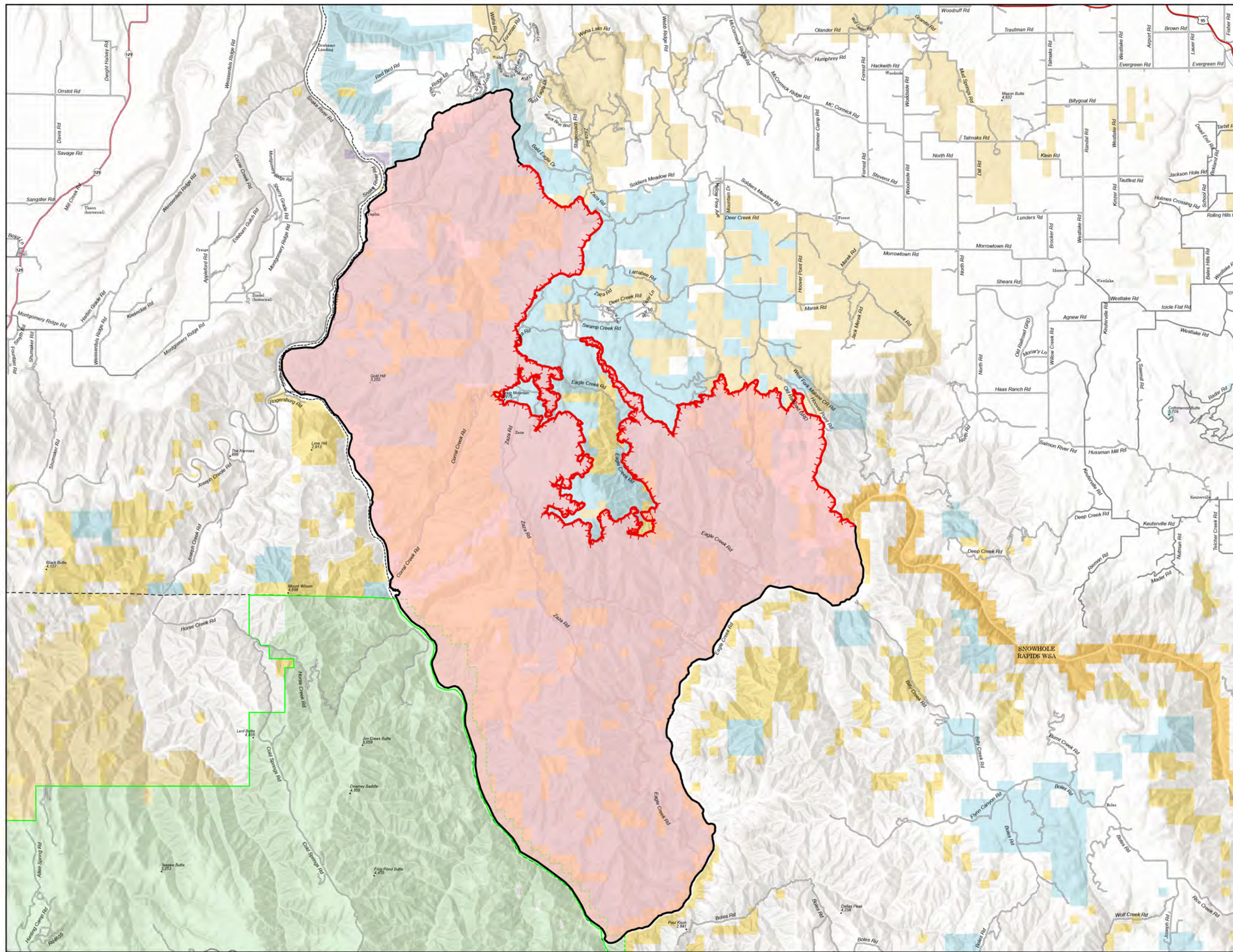
Public Information

Snake River Complex
ID-CMS-000604
7/18/2021

103,907 acres at 7/16/2021 @ 2205
Acres from IR and Imagery
Est. Containment



- Fire Edge
- Contained Line
- Wildfire Daily Fire Perimeter
- Paved Roads
- Dirt (Not Paved)
- Forest Service Land
- Tribal Lands
- State Lands
- Bureau of Land Management Lands
- National Park Service Lands



NR Team 4
7/17/2021 1909

North American 1983 Datum. LatLong Grid