

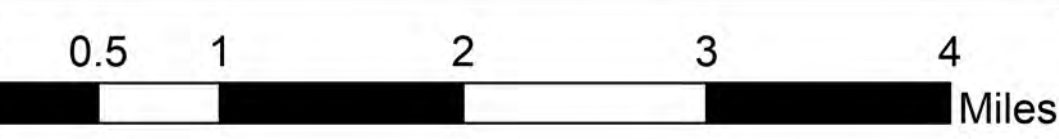
# Air Ops

## Snake River Complex

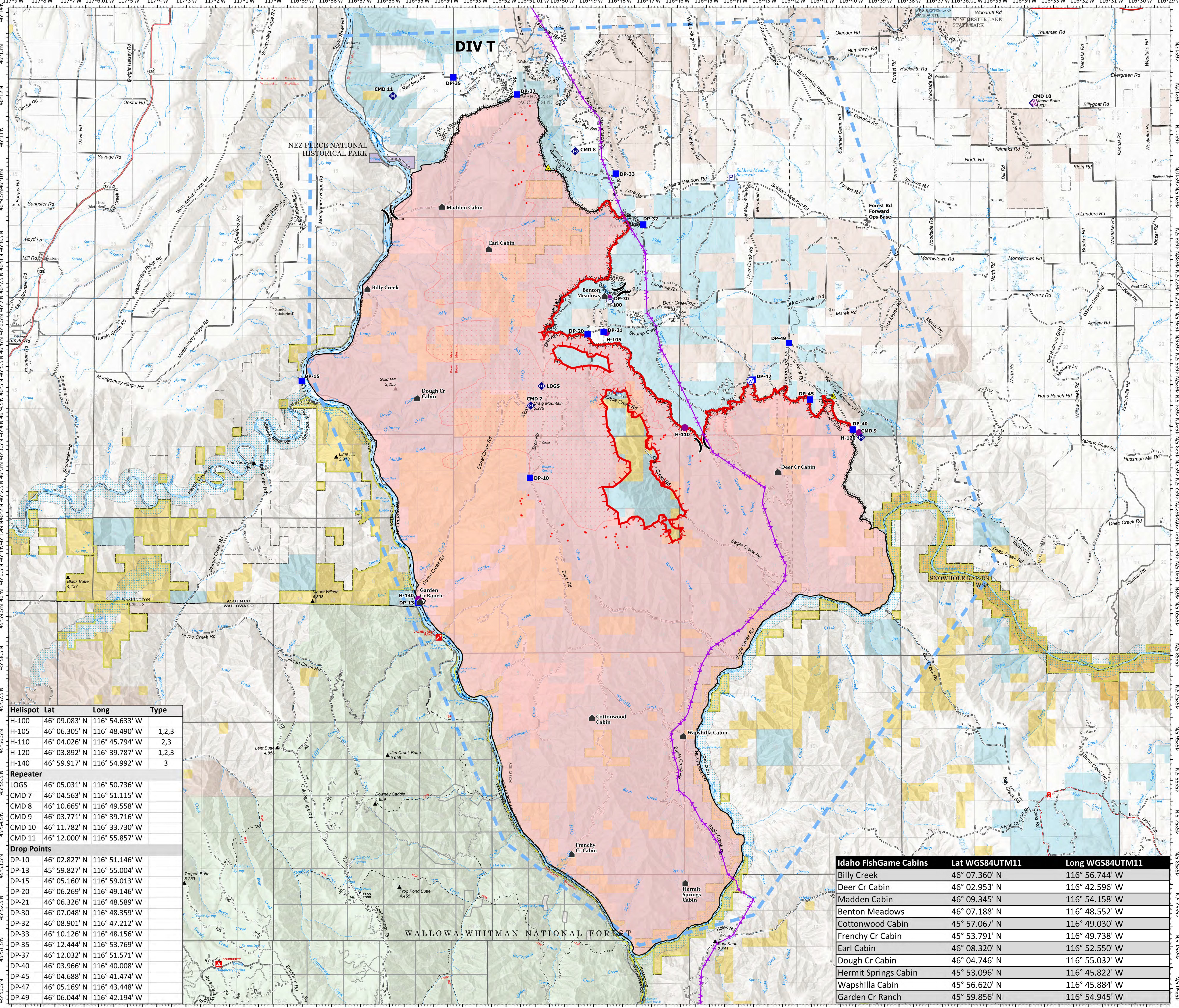
### ID-CMS-000604

#### 7/20/2021

107,433 acres at 7/19/2021 @ 2045  
Acres from IR



- Pump
- Water Tank
- Helispot
- Division Break
- Drop Point
- Other
- Repeater
- Safety Zone
- Water Source
- CraigMtn\_RetardantAvoidance
- Forest Service Land
- Tribal Lands
- State Lands
- Bureau of Land Management Lands
- National Park Service Lands
- Wildfire Daily Fire Perimeter
- IR Heat Perimeter
- IR Intense Heat
- IR Scattered Heat
- Transmission Lines
- Towers
- IR Isolated Heat Source
- Completed Burnout
- Completed Dozer Line
- Completed Road as Line
- Temporary Flight Restriction
- Fire Edge
- Contained Line
- Cabin\_Locations



Helispot	Lat	Long	Type
H-100	46° 09.083' N	116° 54.633' W	
H-105	46° 06.305' N	116° 48.490' W	1,2,3
H-110	46° 04.026' N	116° 45.794' W	2,3
H-120	46° 03.892' N	116° 39.787' W	1,2,3
H-140	46° 59.917' N	116° 54.992' W	3

Repeater	Lat	Long
LOGS	46° 05.031' N	116° 50.736' W
CMD 7	46° 04.563' N	116° 51.115' W
CMD 8	46° 10.665' N	116° 49.558' W
CMD 9	46° 03.771' N	116° 39.716' W
CMD 10	46° 11.782' N	116° 33.730' W
CMD 11	46° 12.000' N	116° 55.857' W

Drop Points	Lat	Long
DP-10	46° 02.827' N	116° 51.146' W
DP-13	45° 59.827' N	116° 55.004' W
DP-15	46° 05.160' N	116° 59.013' W
DP-20	46° 06.269' N	116° 49.146' W
DP-21	46° 06.326' N	116° 48.589' W
DP-30	46° 07.048' N	116° 48.359' W
DP-32	46° 08.901' N	116° 47.212' W
DP-33	46° 10.126' N	116° 48.156' W
DP-35	46° 12.444' N	116° 53.769' W
DP-37	46° 12.032' N	116° 51.571' W
DP-40	46° 03.966' N	116° 40.008' W
DP-45	46° 04.688' N	116° 41.474' W
DP-47	46° 05.169' N	116° 43.448' W
DP-49	46° 06.044' N	116° 42.194' W

Idaho FishGame Cabins	Lat WGS84UTM11	Long WGS84UTM11
Billy Creek	46° 07.360' N	116° 56.744' W
Deer Cr Cabin	46° 02.953' N	116° 42.596' W
Madden Cabin	46° 09.345' N	116° 54.158' W
Benton Meadows	46° 07.188' N	116° 48.552' W
Cottonwood Cabin	45° 57.067' N	116° 49.030' W
Frenchy Cr Cabin	45° 53.791' N	116° 49.738' W
Earl Cabin	46° 08.320' N	116° 52.550' W
Dough Cr Cabin	46° 04.746' N	116° 55.032' W
Hermit Springs Cabin	45° 53.096' N	116° 45.822' W
Wapshilla Cabin	45° 56.620' N	116° 45.884' W
Garden Cr Ranch	45° 59.856' N	116° 54.945' W

