

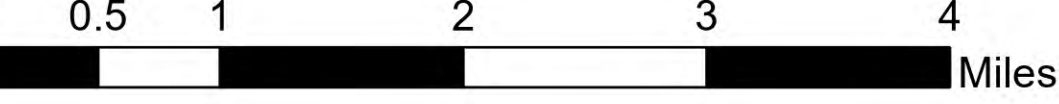
Air Ops

Snake River Complex

ID-CMS-000604

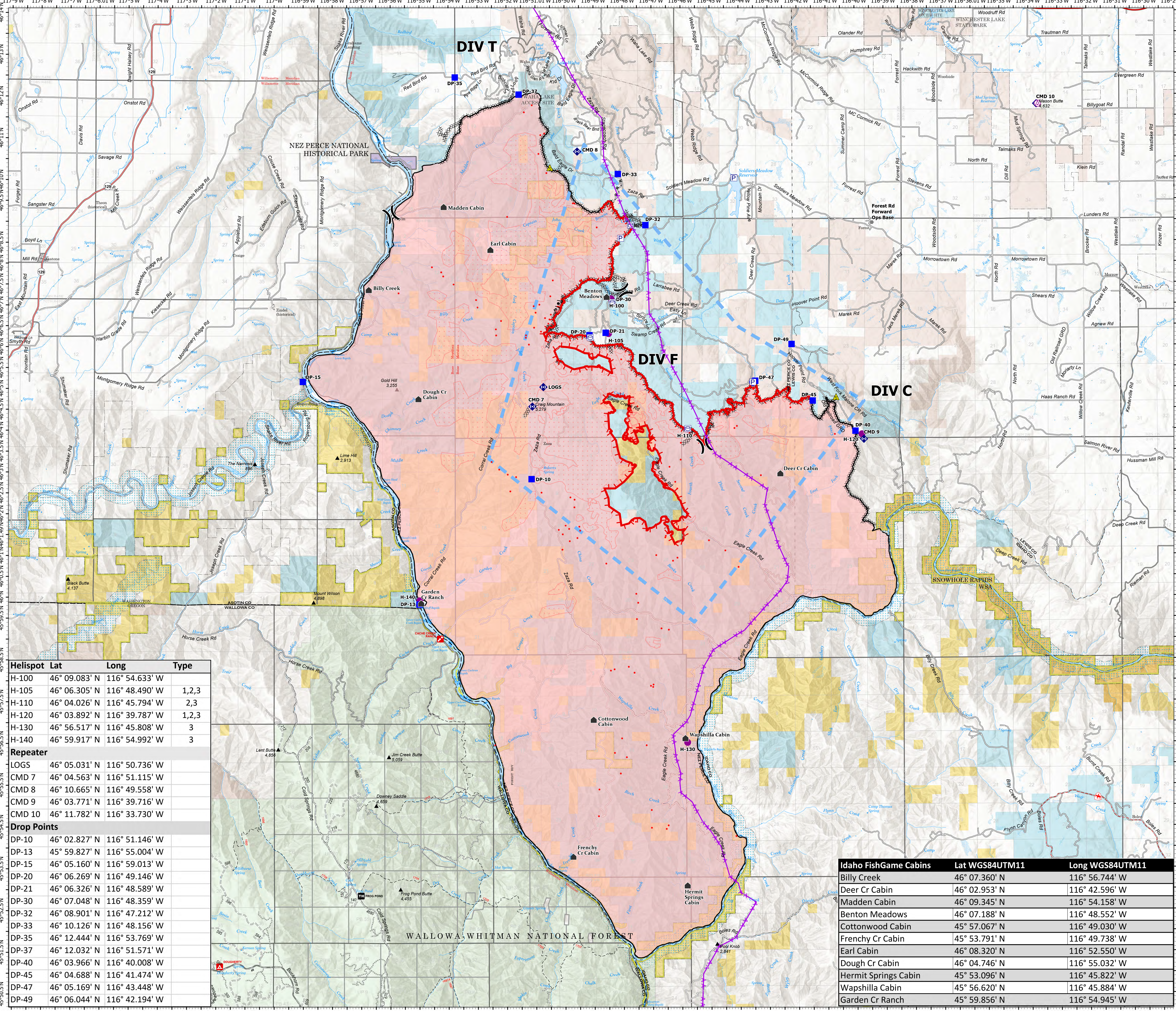
7/22/2021

107,679 acres at 7/21/2021 @ 2228
Acres from IR



1/3581
Sunrise/Sunset
UTC 1500
UTC 0330

- Pump
- Water Tank
- Helispot
- Division Break
- Drop Point
- Other
- Repeater
- Safety Zone
- Water Source
- CraigMtn_RetardantAvoidance
- Forest Service Land
- Tribal Lands
- State Lands
- Bureau of Land Management Lands
- National Park Service Lands
- Wildfire Daily Fire Perimeter
- IR Heat Perimeter
- IR Intense Heat
- IR Scattered Heat
- Transmission Lines
- Towers
- IR Isolated Heat Source
- Completed Burnout
- Completed Dozer Line
- Completed Road as Line
- Temporary Flight Restriction
- Fire Edge
- Contained Line
- Cabin_Locations



| Helispot | Lat | Long | Type |
|----------|---------------|----------------|-------|
| H-100 | 46° 09.083' N | 116° 54.633' W | |
| H-105 | 46° 06.305' N | 116° 48.490' W | 1,2,3 |
| H-110 | 46° 04.026' N | 116° 45.794' W | 2,3 |
| H-120 | 46° 03.892' N | 116° 39.787' W | 1,2,3 |
| H-130 | 46° 56.517' N | 116° 45.808' W | 3 |
| H-140 | 46° 59.917' N | 116° 54.992' W | 3 |

| Repeater | Lat | Long |
|----------|---------------|----------------|
| LOGS | 46° 05.031' N | 116° 50.736' W |
| CMD 7 | 46° 04.563' N | 116° 51.115' W |
| CMD 8 | 46° 10.665' N | 116° 49.558' W |
| CMD 9 | 46° 03.771' N | 116° 39.716' W |
| CMD 10 | 46° 11.782' N | 116° 33.730' W |

| Drop Points | Lat | Long |
|-------------|---------------|----------------|
| DP-10 | 46° 02.827' N | 116° 51.146' W |
| DP-13 | 45° 59.827' N | 116° 55.004' W |
| DP-15 | 46° 05.160' N | 116° 59.013' W |
| DP-20 | 46° 06.269' N | 116° 49.146' W |
| DP-21 | 46° 06.326' N | 116° 48.589' W |
| DP-30 | 46° 07.048' N | 116° 48.359' W |
| DP-32 | 46° 08.901' N | 116° 47.212' W |
| DP-33 | 46° 10.126' N | 116° 48.156' W |
| DP-35 | 46° 12.444' N | 116° 53.769' W |
| DP-37 | 46° 12.032' N | 116° 51.571' W |
| DP-40 | 46° 03.966' N | 116° 40.008' W |
| DP-45 | 46° 04.688' N | 116° 41.474' W |
| DP-47 | 46° 05.169' N | 116° 43.448' W |
| DP-49 | 46° 06.044' N | 116° 42.194' W |

| Idaho FishGame Cabins | Lat WGS84UTM11 | Long WGS84UTM11 |
|-----------------------|----------------|-----------------|
| Billy Creek | 46° 07.360' N | 116° 56.744' W |
| Deer Cr Cabin | 46° 02.953' N | 116° 42.596' W |
| Madden Cabin | 46° 09.345' N | 116° 54.158' W |
| Benton Meadows | 46° 07.188' N | 116° 48.552' W |
| Cottonwood Cabin | 45° 57.067' N | 116° 49.030' W |
| Frenchy Cr Cabin | 45° 53.791' N | 116° 49.738' W |
| Earl Cabin | 46° 08.320' N | 116° 52.550' W |
| Dough Cr Cabin | 46° 04.746' N | 116° 55.032' W |
| Hermit Springs Cabin | 45° 53.096' N | 116° 45.822' W |
| Wapshilla Cabin | 45° 56.620' N | 116° 45.884' W |
| Garden Cr Ranch | 45° 59.856' N | 116° 54.945' W |



NR Team 4
7/22/2021 0558
North American 1983 Datum, Lat/Long
Grid

