

116°39.5'W

116°39.45'W

116°39.4'W

116°39.35'W

U.S. 95

EXIT

ENTRANCE

FOREST ROAD FORWARD OPERATING BASE

Snake River Complex
ID-CMS-000604



0 125 250 Feet



46°9.05'N

46°9.05'N

46°8.99'N

46°8.99'N

46°8.95'N

46°8.95'N

46°8.9'N

46°8.9'N

46°8.85'N

46°8.85'N

Forest Road

ENTRANCE ONLY

FIRE

Soldiers Meadow Rd

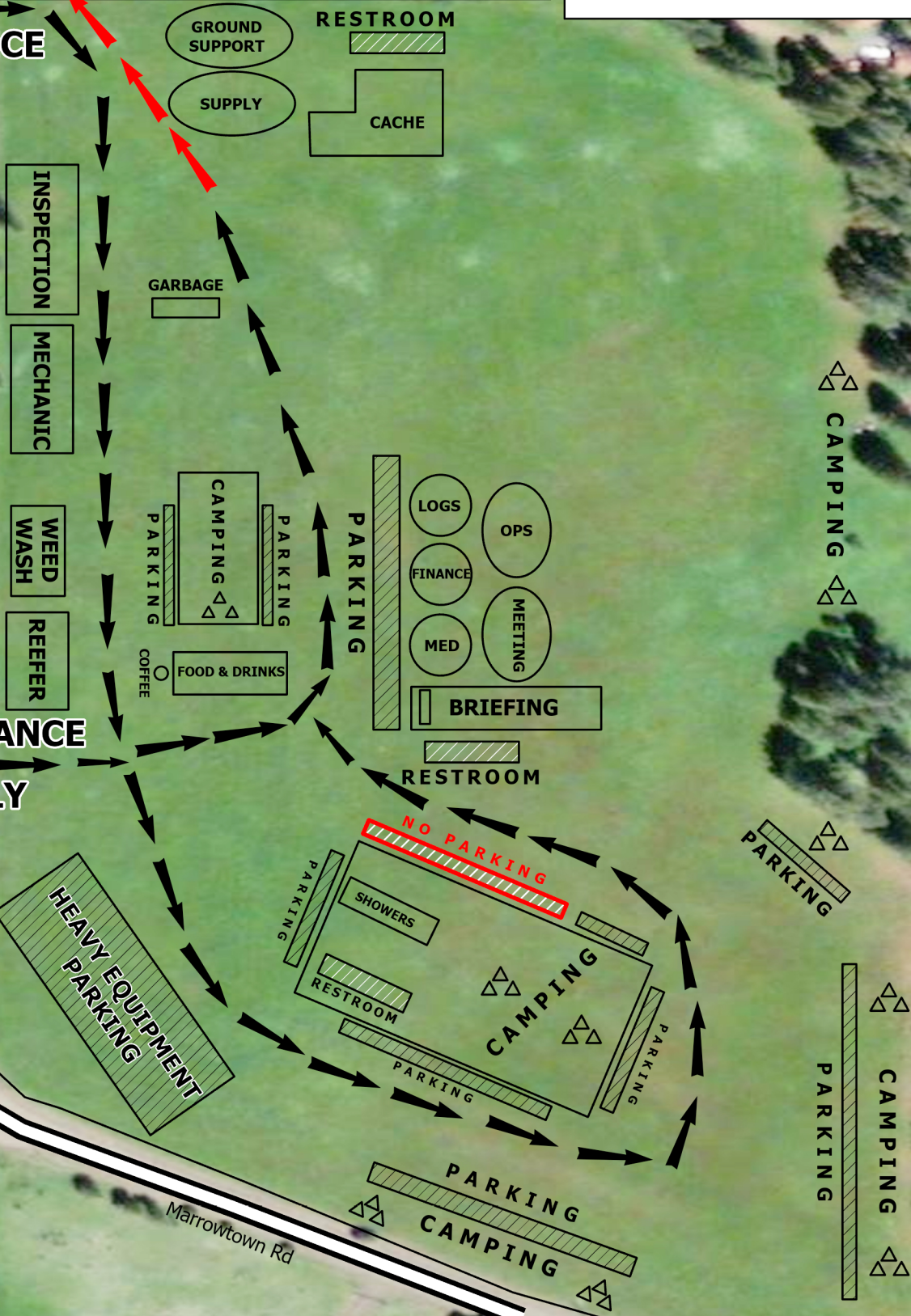


116°39.5'W

116°39.45'W

116°39.4'W

116°39.35'W



116°39.5'W

116°39.45'W

116°39.4'W

116°39.35'W