

# Rehab - Div C/F

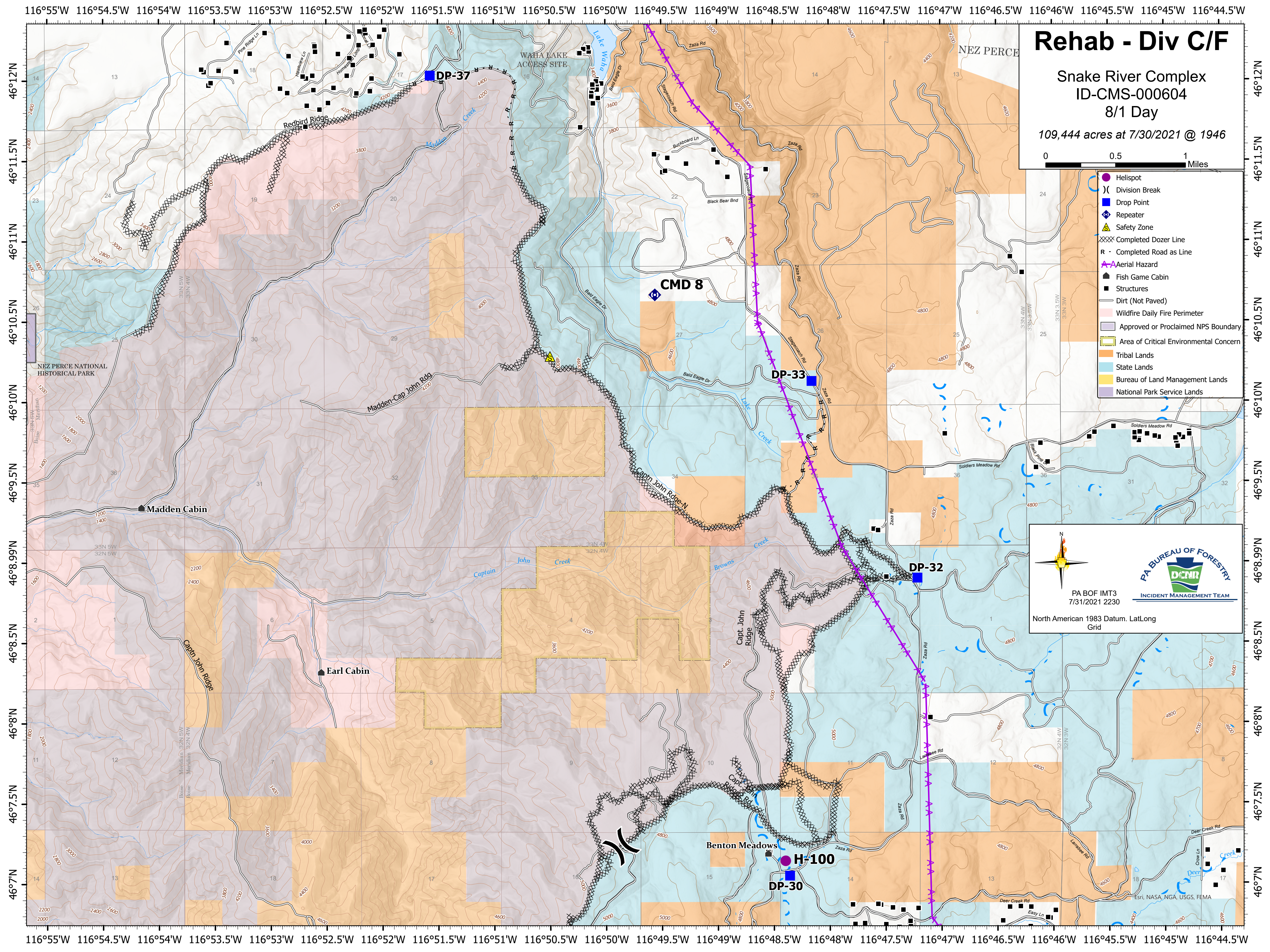
Snake River Complex  
ID-CMS-000604  
8/1 Day  
109,444 acres at 7/30/2021 @ 1946

- Helispot
- Division Break
- Drop Point
- Repeater
- Safety Zone
- Completed Dozer Line
- Completed Road as Line
- Aerial Hazard
- Fish Game Cabin
- Structures
- Dirt (Not Paved)
- Wildfire Daily Fire Perimeter
- Approved or Proclaimed NPS Boundary
- Area of Critical Environmental Concern
- Tribal Lands
- State Lands
- Bureau of Land Management Lands
- National Park Service Lands

PA BUREAU OF FORESTRY  
**DCNR**  
INCIDENT MANAGEMENT TEAM

PA BOF IMT3  
7/31/2021 2230

North American 1983 Datum, LatLong Grid



116°55'W 116°54.5'W 116°54'W 116°53.5'W 116°53'W 116°52.5'W 116°52'W 116°51.5'W 116°51'W 116°50.5'W 116°50'W 116°49.5'W 116°49'W 116°48.5'W 116°48'W 116°47.5'W 116°47'W 116°46.5'W 116°46'W 116°45.5'W 116°45'W 116°44.5'W

46°12'N  
46°11.5'N  
46°11'N  
46°10.5'N  
46°10'N  
46°9.5'N  
46°8.99'N  
46°8.5'N  
46°8'N  
46°7.5'N  
46°7'N

46°12'N  
46°11.5'N  
46°11'N  
46°10.5'N  
46°10'N  
46°9.5'N  
46°8.99'N  
46°8.5'N  
46°8'N  
46°7.5'N  
46°7'N