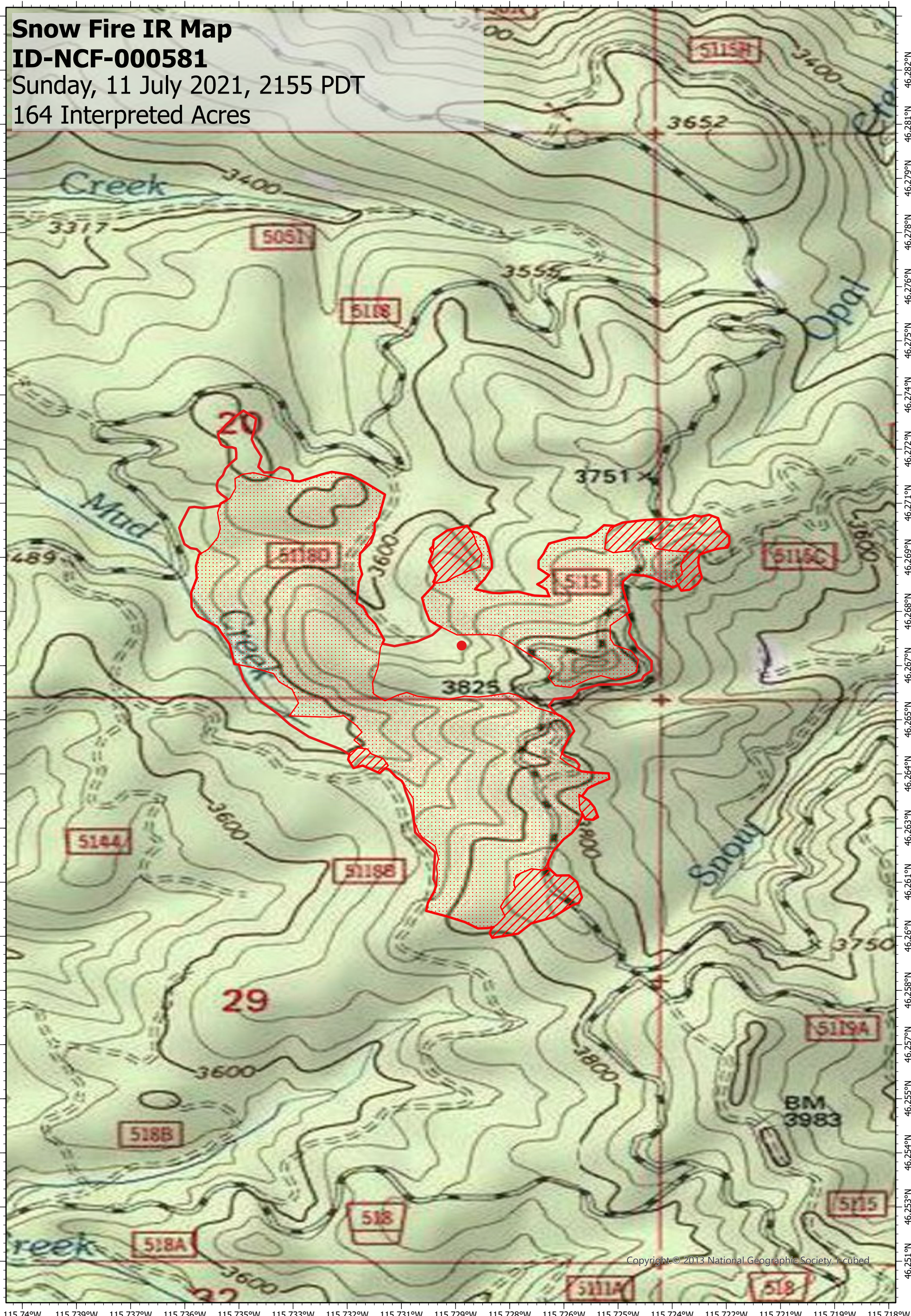


115.74°W 115.739°W 115.737°W 115.736°W 115.735°W 115.733°W 115.732°W 115.731°W 115.729°W 115.728°W 115.726°W 115.725°W 115.724°W 115.722°W 115.721°W 115.719°W 115.718°W



115.74°W 115.739°W 115.737°W 115.736°W 115.735°W 115.733°W 115.732°W 115.731°W 115.729°W 115.728°W 115.726°W 115.725°W 115.724°W 115.722°W 115.721°W 115.719°W 115.718°W

- Legend**
- Isolated Heat
  - ▤ Scattered Heat
  - ▨ Intense Heat
  - ▭ Burn Perimeter

Scale: 1:10,000  
 Projection: WGS 1984  
 Produced by: Owyhee Air Research, LLC  
 IR Interpreter: S. Osberg  
 Contact: [fire@owyheeair.com](mailto:fire@owyheeair.com) (208) 442-5405

0 0.1 0.2 0.3 0.4 0.5 Miles

Copyright © 2013 National Geographic Society, Inc. Cubed