

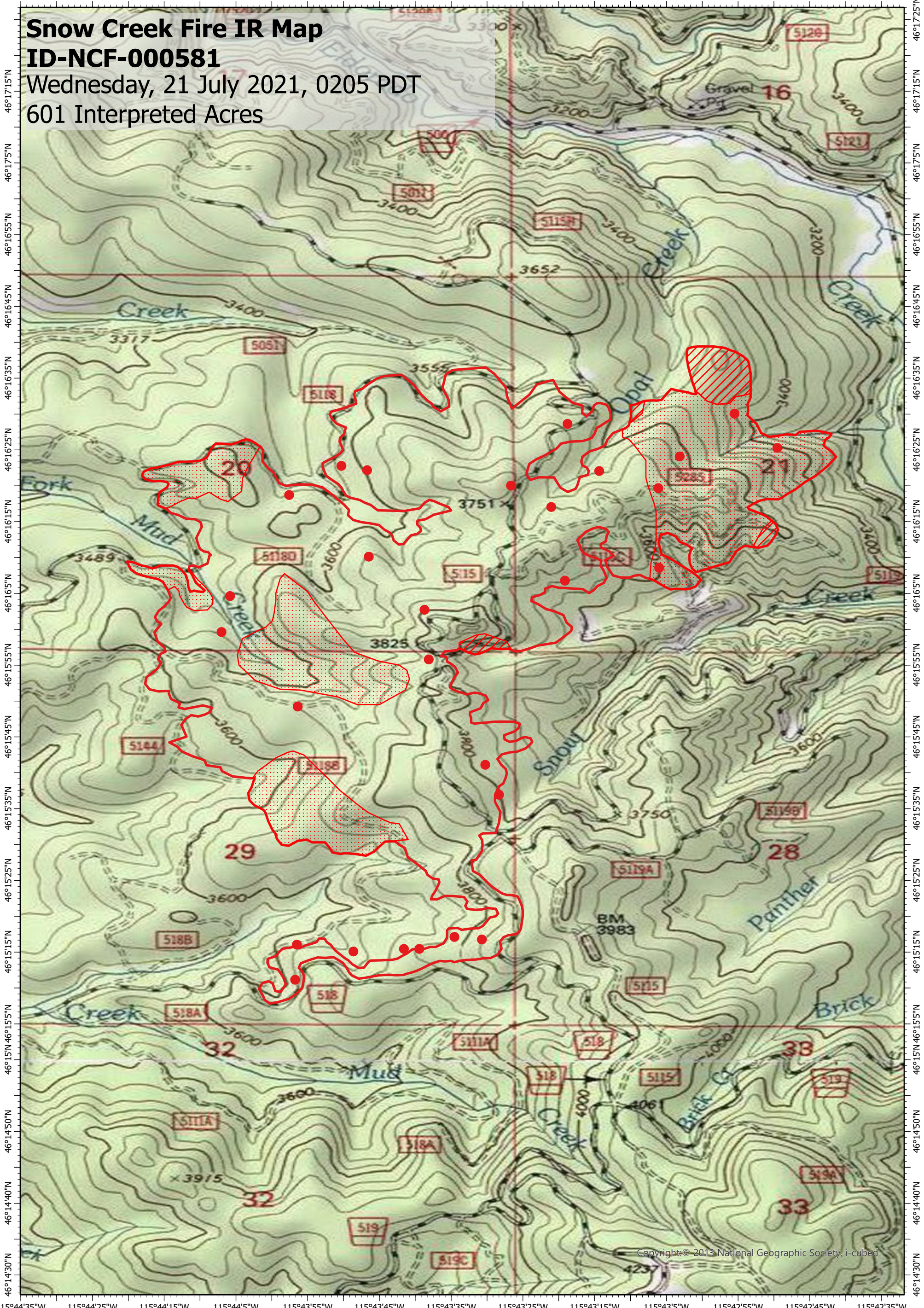
115°44'35"W 115°44'25"W 115°44'15"W 115°44'5"W 115°43'55"W 115°43'45"W 115°43'35"W 115°43'25"W 115°43'15"W 115°43'5"W 115°42'55"W 115°42'45"W 115°42'35"W

Snow Creek Fire IR Map

ID-NCF-000581

Wednesday, 21 July 2021, 0205 PDT

601 Interpreted Acres



Copyright: © 2013 National Geographic Society, i-cubed

115°44'35"W 115°44'25"W 115°44'15"W 115°44'5"W 115°43'55"W 115°43'45"W 115°43'35"W 115°43'25"W 115°43'15"W 115°43'5"W 115°42'55"W 115°42'45"W 115°42'35"W

Legend

- Isolated Heat
- Scattered Heat
- Intense Heat
- Burn Perimeter

Scale: 1:15,000

Projection: WGS 1984

Produced by: Owyhee Air Research, LLC

IR Interpreter: C. Merriman

Contact: fire@owyheeair.com (208) 442-5405

0

0.5

1

Miles

N

