

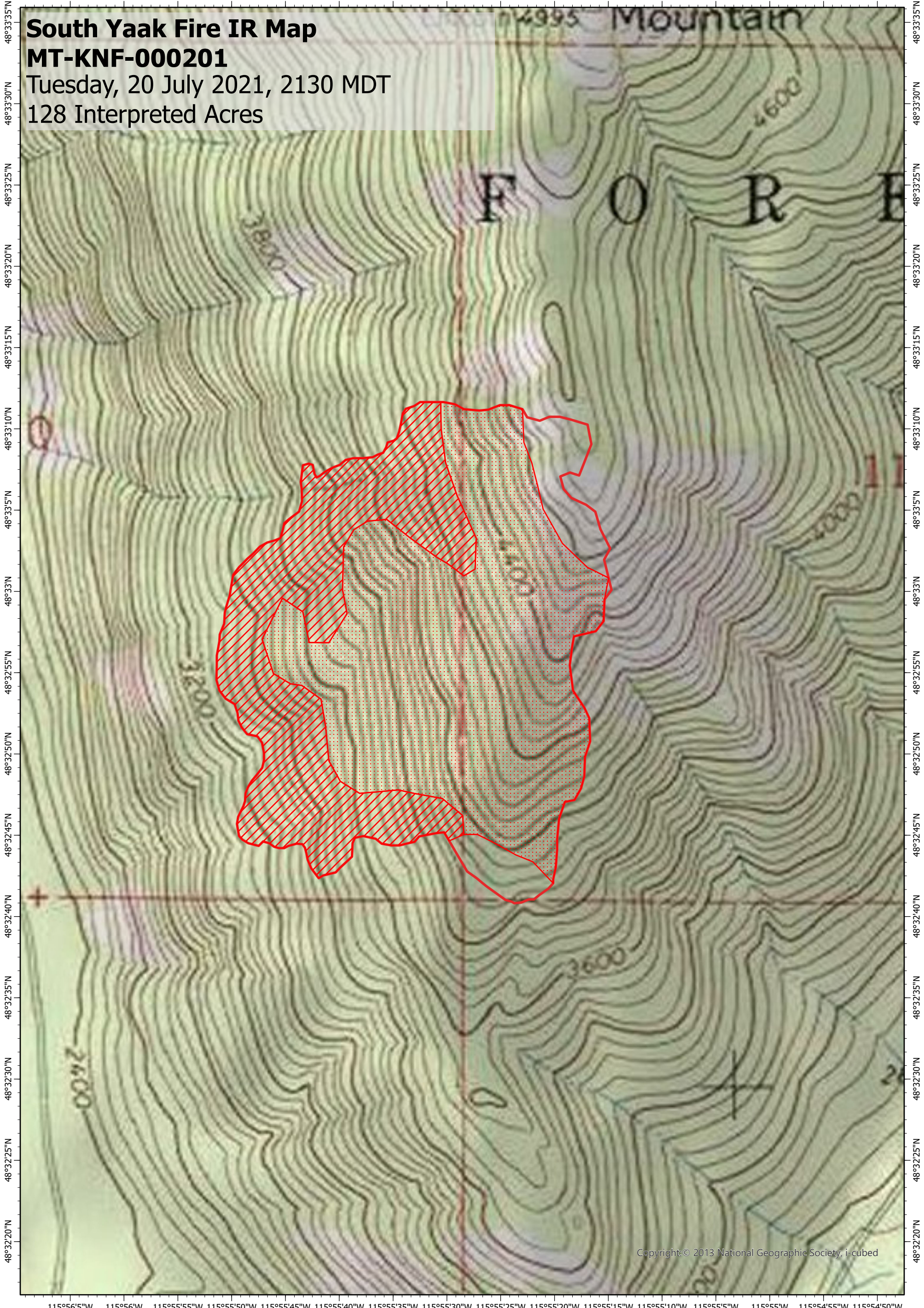
115°56'5"W 115°56"W 115°55'55"W 115°55'50"W 115°55'45"W 115°55'40"W 115°55'35"W 115°55'30"W 115°55'25"W 115°55'20"W 115°55'15"W 115°55'10"W 115°55'5"W 115°55"W 115°54'55"W 115°54'50"W

# South Yaak Fire IR Map

## MT-KNF-000201

Tuesday, 20 July 2021, 2130 MDT




128 Interpreted Acres



Copyright: © 2013 National Geographic Society, i-cubed

115°56'5"W 115°56"W 115°55'55"W 115°55'50"W 115°55'45"W 115°55'40"W 115°55'35"W 115°55'30"W 115°55'25"W 115°55'20"W 115°55'15"W 115°55'10"W 115°55'5"W 115°55"W 115°54'55"W 115°54'50"W

### Legend

-  Scattered Heat
-  Intense Heat
-  Burn Perimeter

Scale: 1:10,000

Projection: WGS 1984

Produced by: Owyhee Air Research, LLC

IR Interpreter: C. Merriman

Contact: fire@owyheear.com (208) 442-5405

