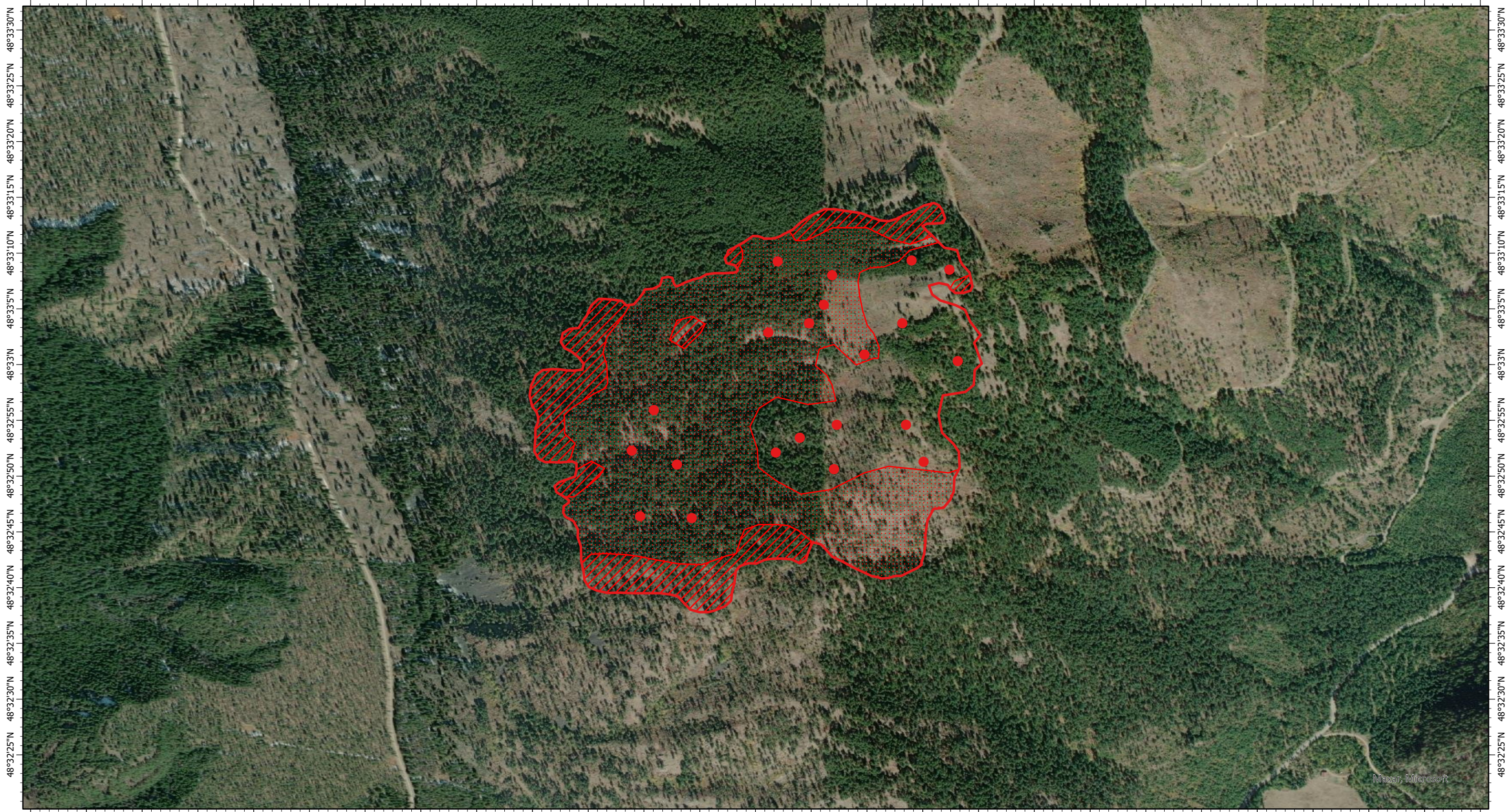


115°56'40"W 115°56'35"W 115°56'30"W 115°56'25"W 115°56'20"W 115°56'15"W 115°56'10"W 115°56'5"W 115°56"W 115°55'55"W 115°55'50"W 115°55'45"W 115°55'40"W 115°55'35"W 115°55'30"W 115°55'25"W 115°55'20"W 115°55'15"W 115°55'10"W 115°55'5"W 115°55"W 115°54'55"W 115°54'50"W 115°54'45"W 115°54'40"W 115°54'35"W 115°54'30"W



115°56'40"W 115°56'35"W 115°56'30"W 115°56'25"W 115°56'20"W 115°56'15"W 115°56'10"W 115°56'5"W 115°56"W 115°55'55"W 115°55'50"W 115°55'45"W 115°55'40"W 115°55'35"W 115°55'30"W 115°55'25"W 115°55'20"W 115°55'15"W 115°55'10"W 115°55'5"W 115°55"W 115°54'55"W 115°54'50"W 115°54'45"W 115°54'40"W 115°54'35"W 115°54'30"W

South Yaak Fire IR Map
MT-KNF-000201

Wednesday, 21 July 2021, 2130 MDT
161 Interpreted Acres

Scale: 1:10,000
Projection: WGS 1984
Produced by: Owyhee Air Research, LLC
IR Interpreter: C. Merriman
Contact: fire@owyheear.com (208) 442-5405

Legend

- Isolated Heat
- Burn Perimeter
- Intense Heat
- Scattered Heat

