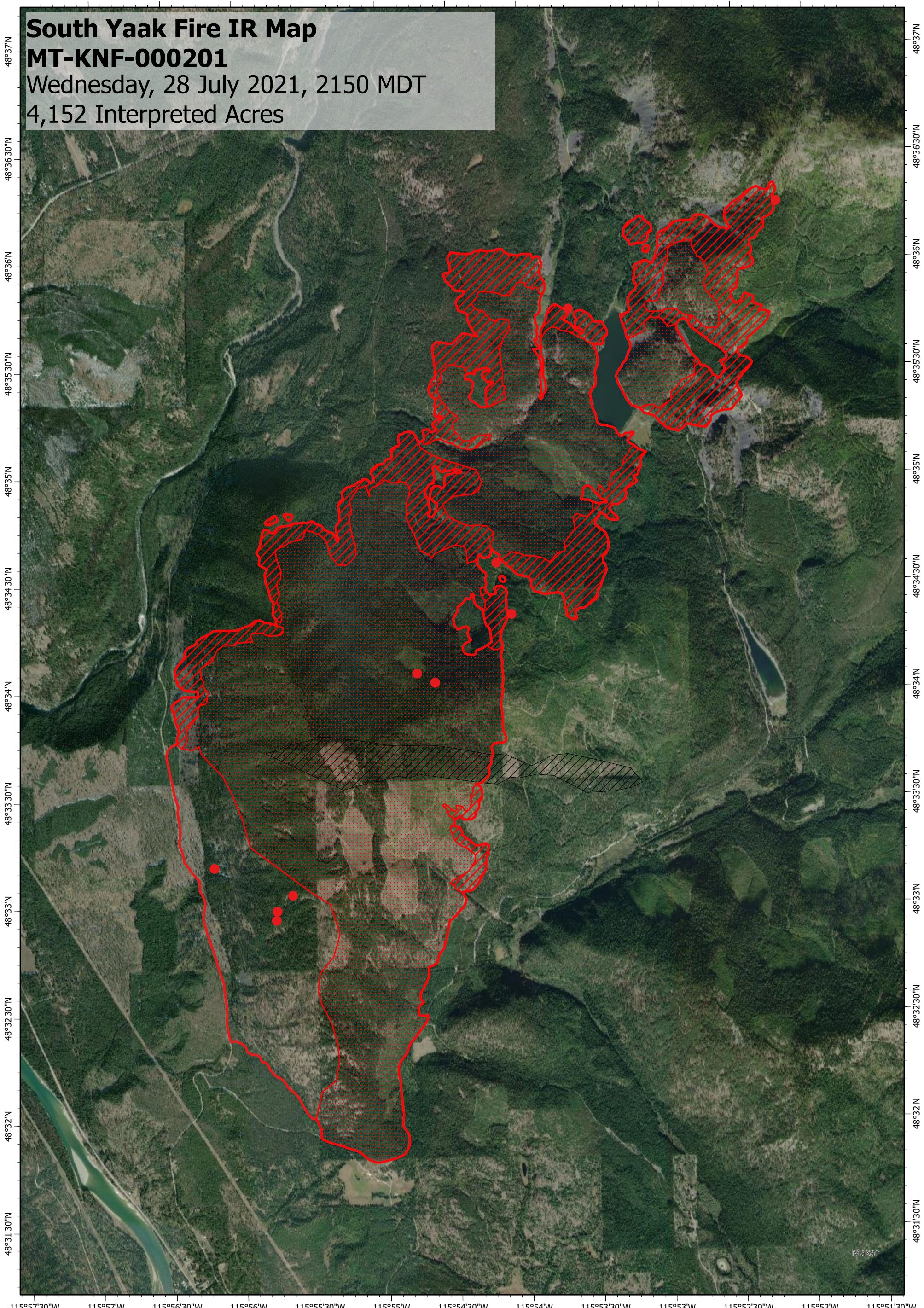


115°57'W 115°56'30"W 115°56'W 115°55'30"W 115°55'W 115°54'30"W 115°54'W 115°53'30"W 115°53'W 115°52'30"W 115°52'W 115°51'30"W

South Yaak Fire IR Map
MT-KNF-000201
Wednesday, 28 July 2021, 2150 MDT
4,152 Interpreted Acres



115°57'30"W 115°57'W 115°56'30"W 115°56'W 115°55'30"W 115°55'W 115°54'30"W 115°54'W 115°53'30"W 115°53'W 115°52'30"W 115°52'W 115°51'30"W

Legend

- Isolated Heat
- / / / / Intense Heat
- Scattered Heat
- Burn Perimeter
- / / / / Missing Imagery

Scale: 1:30,000
 Projection: North American 1983
 Produced by: Owyhee Air Research, LLC
 IR Interpreter: E. Trout
 Contact: fire@owyheear.com (208) 442-5405

