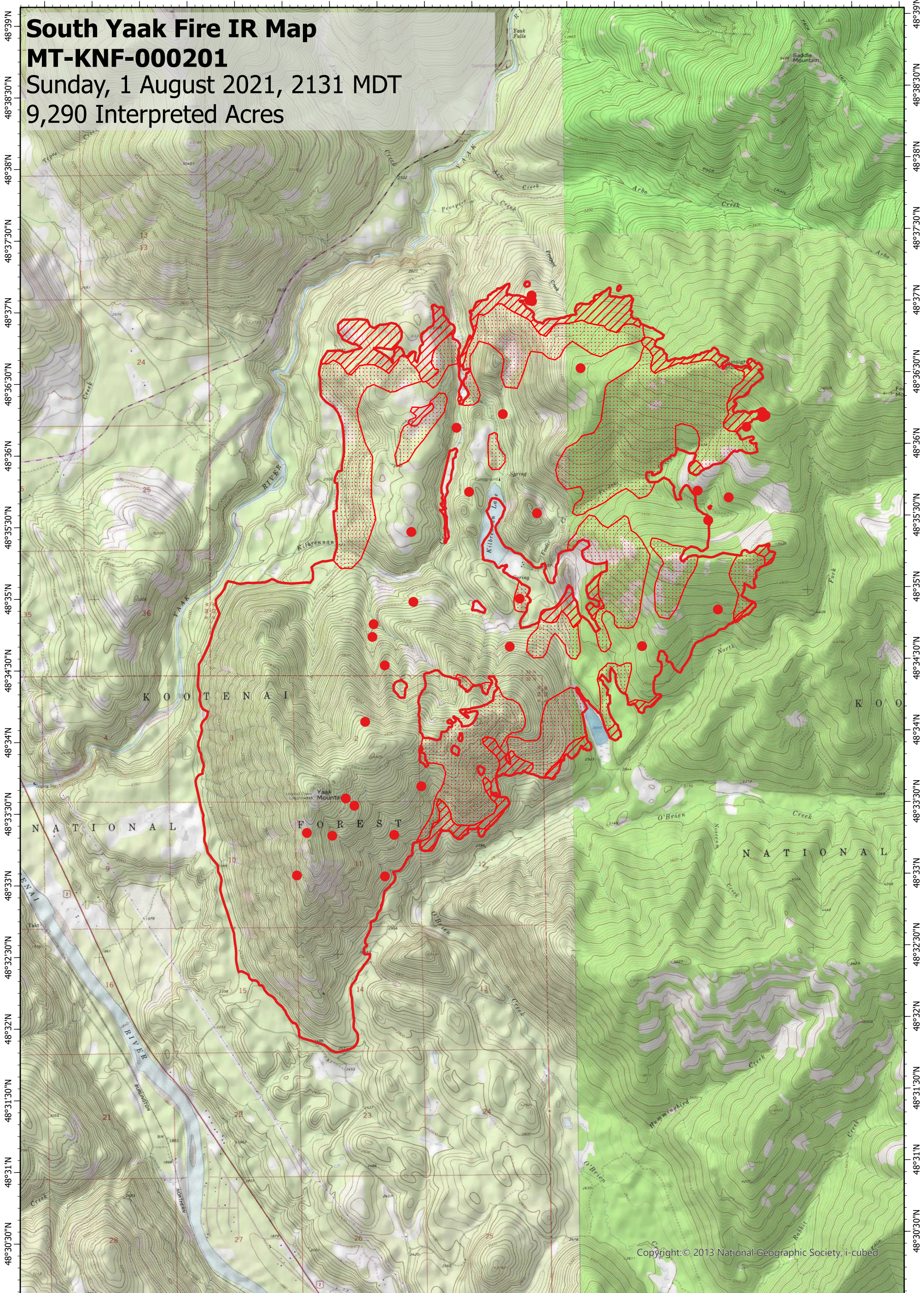


115°58'W 115°57'30"W 115°57'W 115°56'30"W 115°56'W 115°55'30"W 115°55'W 115°54'30"W 115°54'W 115°53'30"W 115°53'W 115°52'30"W 115°52'W 115°51'30"W 115°51'W 115°50'30"W 115°50'W 115°49'30"W 115°49'W

South Yaak Fire IR Map

MT-KNF-000201

Sunday, 1 August 2021, 2131 MDT
9,290 Interpreted Acres



Copyright: © 2013 National Geographic Society, i-cubed

115°58'W 115°57'30"W 115°57'W 115°56'30"W 115°56'W 115°55'30"W 115°55'W 115°54'30"W 115°54'W 115°53'30"W 115°53'W 115°52'30"W 115°52'W 115°51'30"W 115°51'W 115°50'30"W 115°50'W 115°49'30"W 115°49'W

Legend

- Isolated Heat
- Burn Perimeter
- Intense Heat
- Scattered Heat

Scale: 1:45,000
 Projection: North American 1983
 Produced by: Owyhee Air Research, LLC
 IR Interpreter: C. Holley
 Contact: fire@owyheeair.com (208) 442-5405

