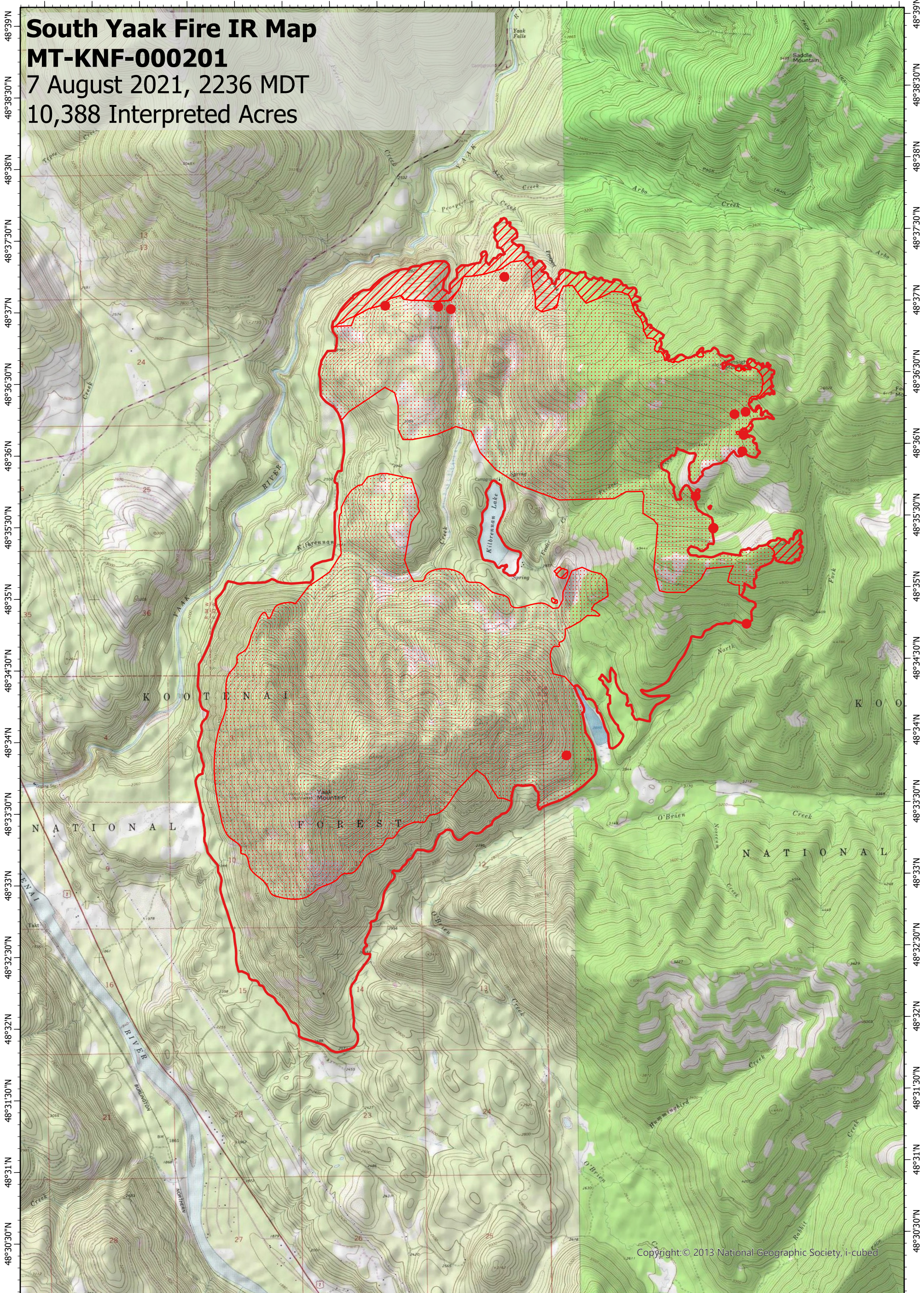


115°58'W 115°57'30"W 115°57'W 115°56'30"W 115°56'W 115°55'30"W 115°55'W 115°54'30"W 115°54'W 115°53'30"W 115°53'W 115°52'30"W 115°52'W 115°51'30"W 115°51'W 115°50'30"W 115°50'W 115°49'30"W 115°49'W

# South Yaak Fire IR Map

## MT-KNF-000201

7 August 2021, 2236 MDT  
10,388 Interpreted Acres



Copyright: © 2013 National Geographic Society, i-cubed

115°58'W 115°57'30"W 115°57'W 115°56'30"W 115°56'W 115°55'30"W 115°55'W 115°54'30"W 115°54'W 115°53'30"W 115°53'W 115°52'30"W 115°52'W 115°51'30"W 115°51'W 115°50'30"W 115°50'W 115°49'30"W 115°49'W

### Legend

- Isolated Heat
- Burn Perimeter
- Intense Heat
- Scattered Heat

Scale: 1:45,000  
 Projection: North American 1983  
 Produced by: Owyhee Air Research, LLC  
 IR Interpreter: M. Beers  
 Contact: [fire@owyheear.com](mailto:fire@owyheear.com) (208) 442-5405

