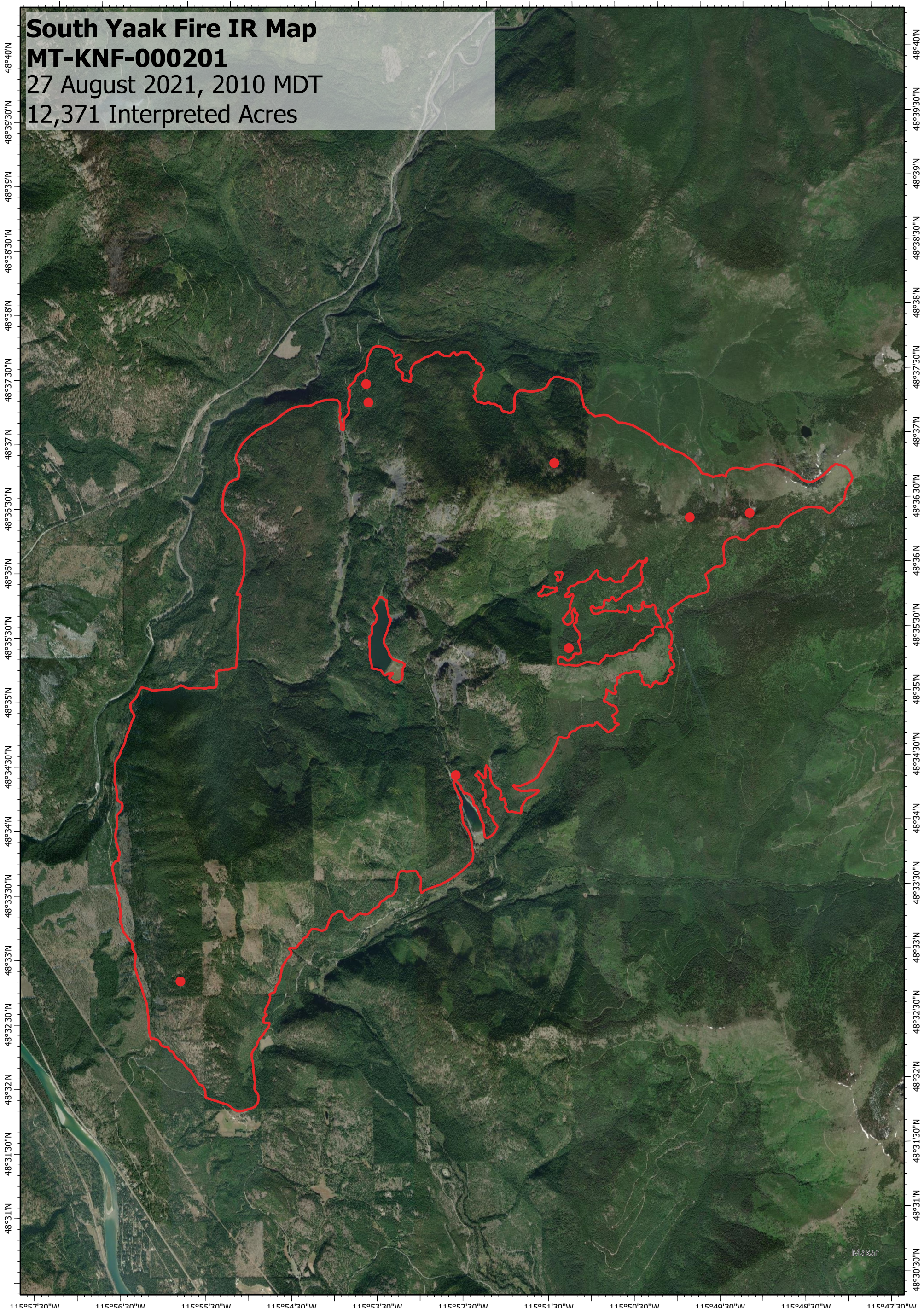


115°57'W 115°56'W 115°55'W 115°54'W 115°53'W 115°52'W 115°51'W 115°50'W 115°49'W 115°48'W

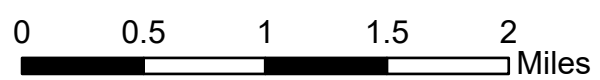
South Yaak Fire IR Map
MT-KNF-000201
27 August 2021, 2010 MDT
12,371 Interpreted Acres



Legend

- Isolated Heat
- Burn Perimeter

Scale: 1:50,000
 Projection: North American 1983
 Produced by: Owyhee Air Research, LLC
 IR Interpreter: S. Osberg
 Contact: fire@owyheear.com (208) 442-5405



115°57'30"W 115°56'30"W 115°55'30"W 115°54'30"W 115°53'30"W 115°52'30"W 115°51'30"W 115°50'30"W 115°49'30"W 115°48'30"W 115°47'30"W

48°31'N
48°31'30"N
48°32'N
48°32'30"N
48°33'N
48°33'30"N
48°34'N
48°34'30"N
48°35'N
48°35'30"N
48°36'N
48°36'30"N
48°37'N
48°37'30"N
48°38'N
48°38'30"N
48°39'N
48°39'30"N
48°40'N