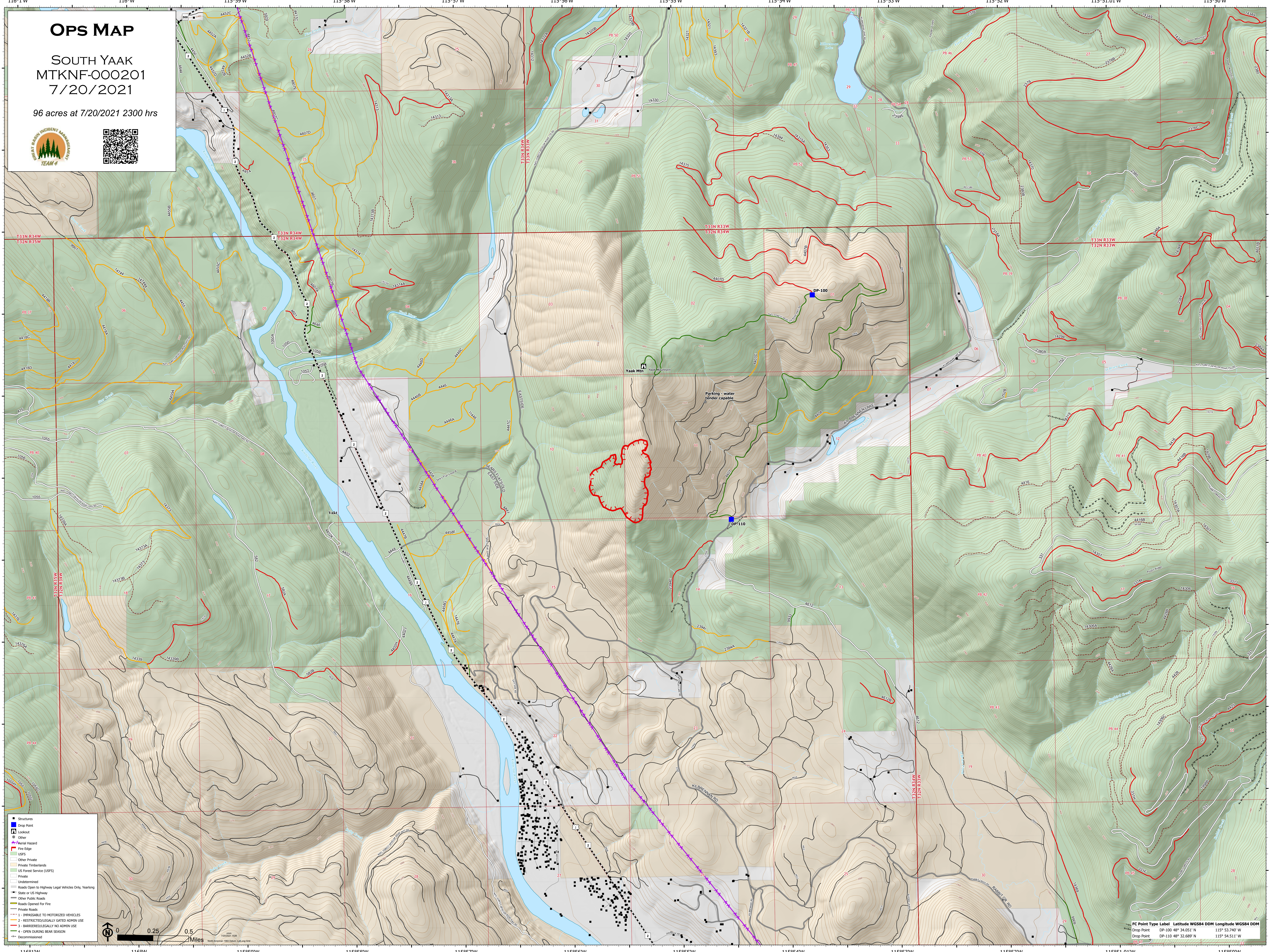


# OPS MAP

SOUTH YAAK  
MTKNF-000201  
7/20/2021

96 acres at 7/20/2021 2300 hrs



**Structures**

- Drop Point
- Lookout
- Other
- Aerial Hazard

**Fire Edge**

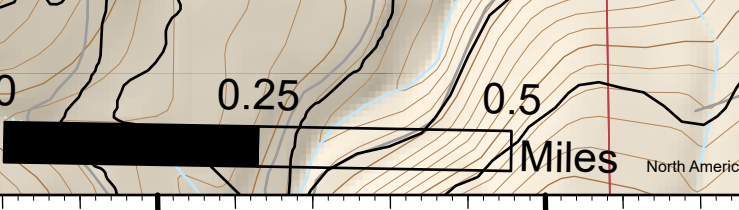
- USFS
- Other Private
- Private Timberlands
- US Forest Service (USFS)
- Private
- Undetermined

**Roads**

- Roads Open to Highway Legal Vehicles Only, Yearlong
- State or US Highway
- Other Public Roads
- Roads Cleared For Fire
- Private Roads

**Vehicle Access**

- 1 - IMPASSABLE TO MOTORIZED VEHICLES
- 2 - RESTRICTED/LEGALLY GATED ADMIN USE
- 3 - BARBED WIRE/LEGALLY NO ADMIN USE
- 4 - OPEN DURING BEAR SEASON
- x - Decommissioned



FC Point Type	Label	Latitude WGS84 DDM	Longitude WGS84 DDM
Drop Point	DP-100	48° 34.051' N	115° 53.740' W
Drop Point	DP-110	48° 32.689' N	115° 54.511' W