

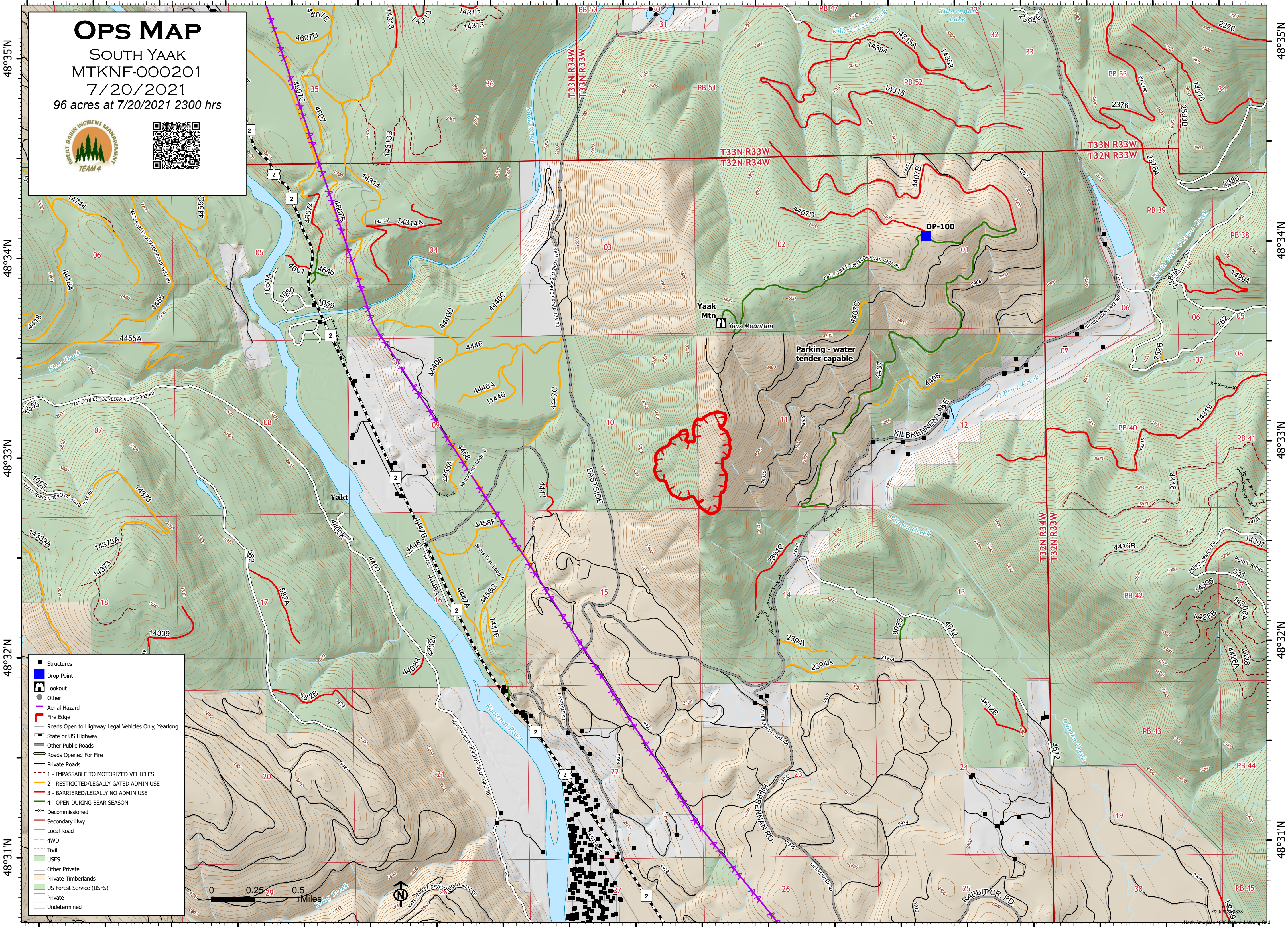
116°W 115°59'W 115°58'W 115°57'W 115°56'W 115°55'W 115°54'W 115°53'W 115°52'W

# OPS MAP

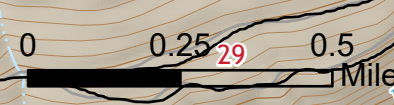
## SOUTH YAAK MTKNF-000201

7/20/2021

96 acres at 7/20/2021 2300 hrs



- Structures
- Drop Point
- ▲ Lookout
- Other
- Aerial Hazard
- Fire Edge
- Roads Open to Highway Legal Vehicles Only, Yearlong
- State or US Highway
- Other Public Roads
- Roads Opened For Fire
- Private Roads
- 1 - IMPASSABLE TO MOTORIZED VEHICLES
- 2 - RESTRICTED/LEGALLY GATED ADMIN USE
- 3 - BARRIERED/LEGALLY NO ADMIN USE
- 4 - OPEN DURING BEAR SEASON
- X- Decommissioned
- Secondary Hwy
- Local Road
- 4WD
- Trail
- USFS
- Other Private
- Private Timberlands
- US Forest Service (USFS)
- Private
- Undetermined



116°W 115°59'W 115°58'W 115°57'W 115°56'W 115°55'W 115°54'W 115°53'W 115°52'W

48°35'N  
48°34'N  
48°33'N  
48°32'N  
48°31'N

48°35'N  
48°34'N  
48°33'N  
48°32'N  
48°31'N