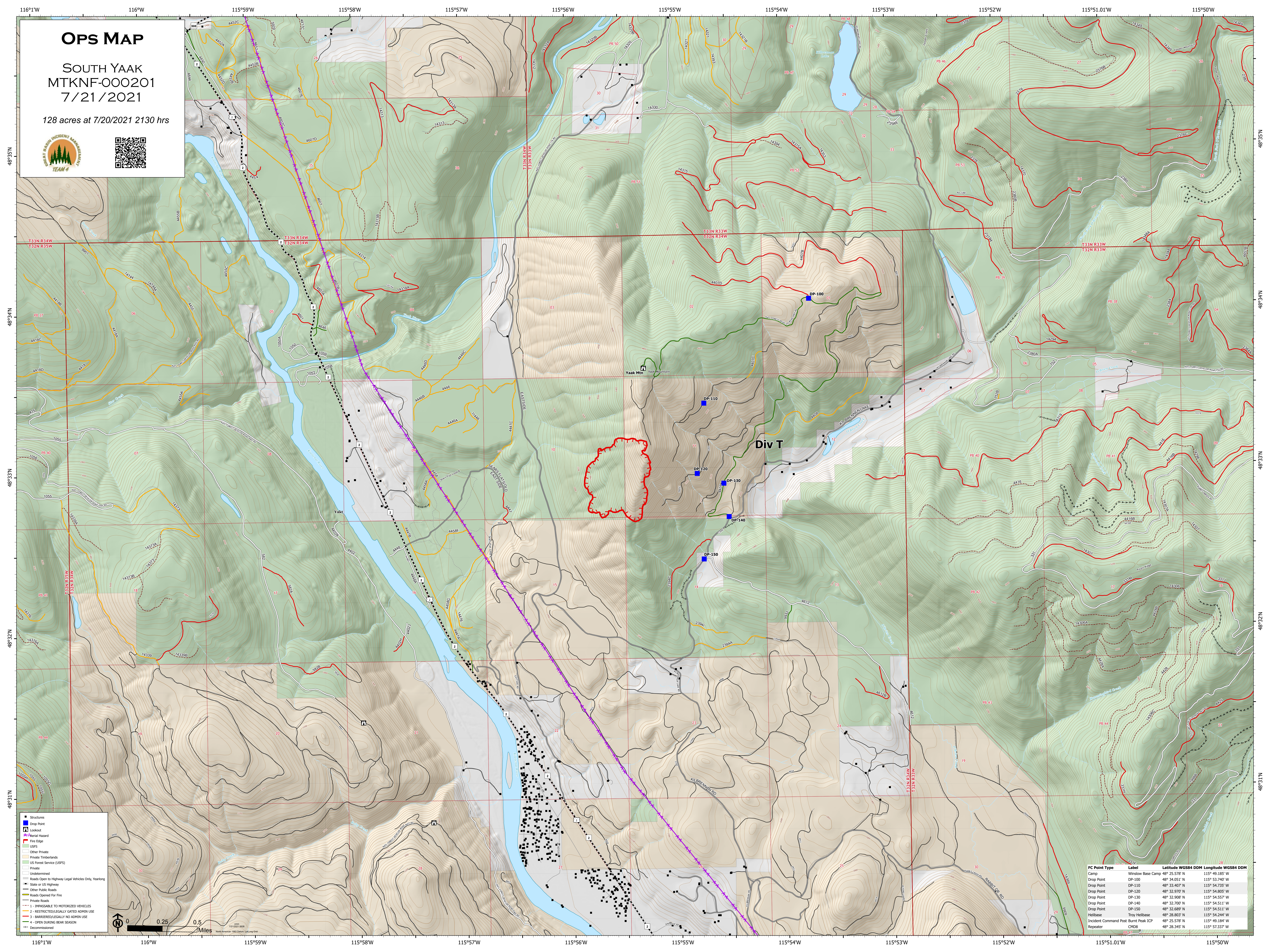


# OPS MAP

SOUTH YAAK  
MTKNF-000201  
7/21/2021

128 acres at 7/20/2021 2130 hrs



Div T

Yaak Mtn

- Structures
- Drop Point
- Lockout
- Aerial Hazard
- Fire Edge
- USFS
- Other Private
- Private Timberlands
- US Forest Service (USFS)
- Private
- Undetermined
- Roads Open to Highway Legal Vehicles Only, Yearlong
- State or US Highway
- Other Public Roads
- Roads Closed for Fire
- Private Roads
- 1 - IMPASSABLE TO MOTORIZED VEHICLES
- 2 - RESTRICTED/LEGALLY GATED ADMIN USE
- 3 - BARBED WIRE/LEGALLY NO ADMIN USE
- 4 - OPEN DURING BEAR SEASON
- Decommissioned

FC Point Type	Label	Latitude WGS84 DDM	Longitude WGS84 DDM
Camp	Windows Base Camp	48° 25.578' N	115° 49.185' W
Drop Point	DP-100	48° 34.051' N	115° 53.740' W
Drop Point	DP-110	48° 33.407' N	115° 54.735' W
Drop Point	DP-120	48° 32.970' N	115° 54.805' W
Drop Point	DP-130	48° 32.908' N	115° 54.557' W
Drop Point	DP-140	48° 32.700' N	115° 54.511' W
Drop Point	DP-150	48° 32.688' N	115° 54.511' W
Helibase	Troy Helibase	48° 28.803' N	115° 54.244' W
Incident Command Post	Burr Peak ICP	48° 25.578' N	115° 49.184' W
Repeater	CMDB	48° 28.345' N	115° 57.337' W

