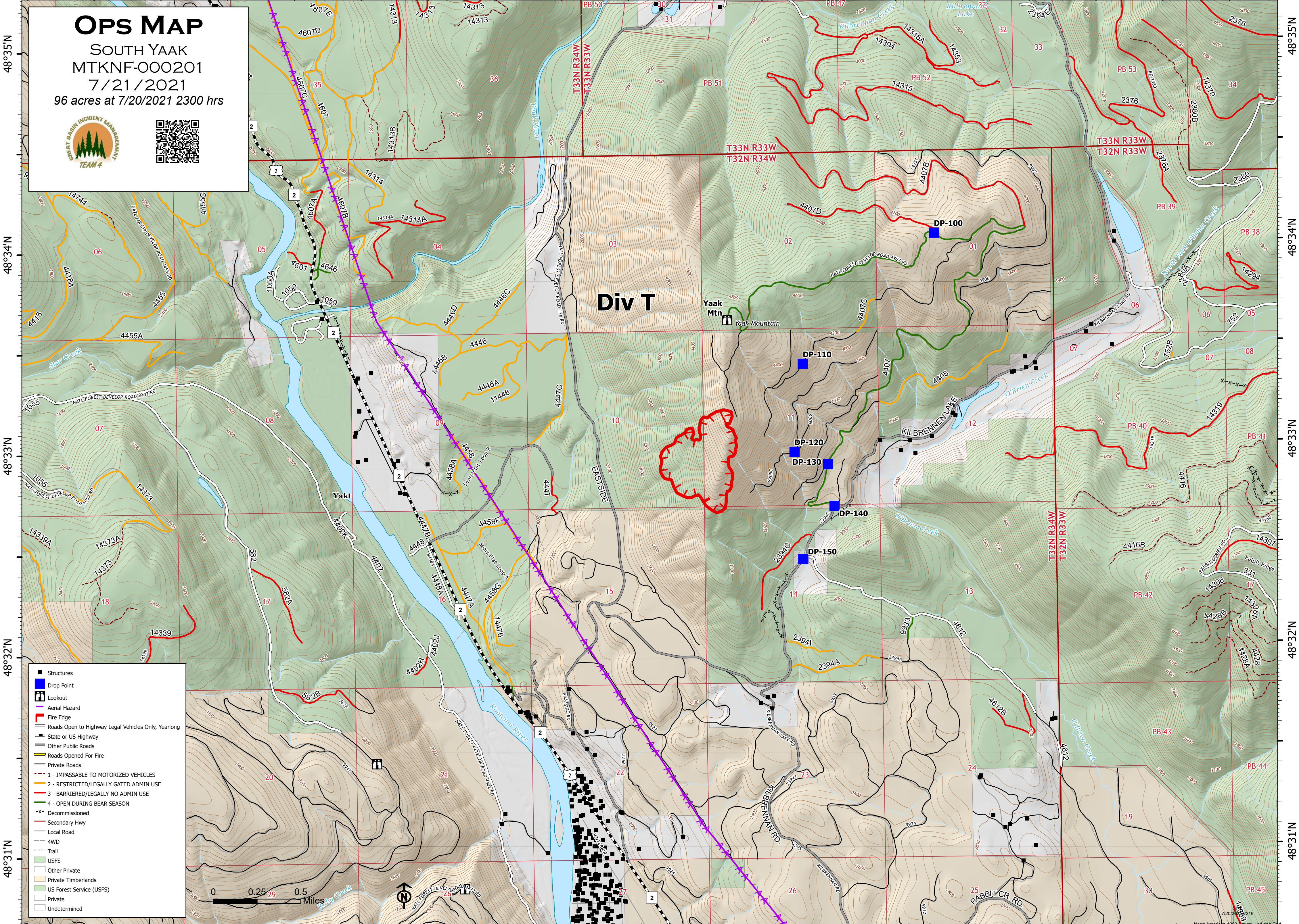


116°W 115°59'W 115°58'W 115°57'W 115°56'W 115°55'W 115°54'W 115°53'W 115°52'W

# OPS MAP

## SOUTH YAAK MTKNF-000201

7/21/2021  
96 acres at 7/20/2021 2300 hrs



### Div T

Yaak Mtn  
Yaak Mountain

DP-100

DP-110

DP-120

DP-130

DP-140

DP-150

48°35'N  
48°34'N  
48°33'N  
48°32'N  
48°31'N

48°35'N  
48°34'N  
48°33'N  
48°32'N  
48°31'N

- Structures
- Drop Point
- 🏠 Lookout
- ⚠️ Aerial Hazard
- 🔴 Fire Edge
- 🛣️ Roads Open to Highway Legal Vehicles Only, Yearlong
- 🛣️ State or US Highway
- 🛣️ Other Public Roads
- 🛣️ Roads Opened For Fire
- 🛣️ Private Roads
- 1 - IMPASSABLE TO MOTORIZED VEHICLES
- 2 - RESTRICTED/LEGALLY GATED ADMIN USE
- 3 - BARRIERED/LEGALLY NO ADMIN USE
- 4 - OPEN DURING BEAR SEASON
- X- Decommissioned
- 🛣️ Secondary Hwy
- 🛣️ Local Road
- 🛣️ 4WD
- 🛣️ Trail
- 🌲 USFS
- 🏠 Other Private
- 🌲 Private Timberlands
- 🌲 US Forest Service (USFS)
- 🏠 Private
- 🏠 Undetermined



116°W 115°59'W 115°58'W 115°57'W 115°56'W 115°55'W 115°54'W 115°53'W 115°52'W