

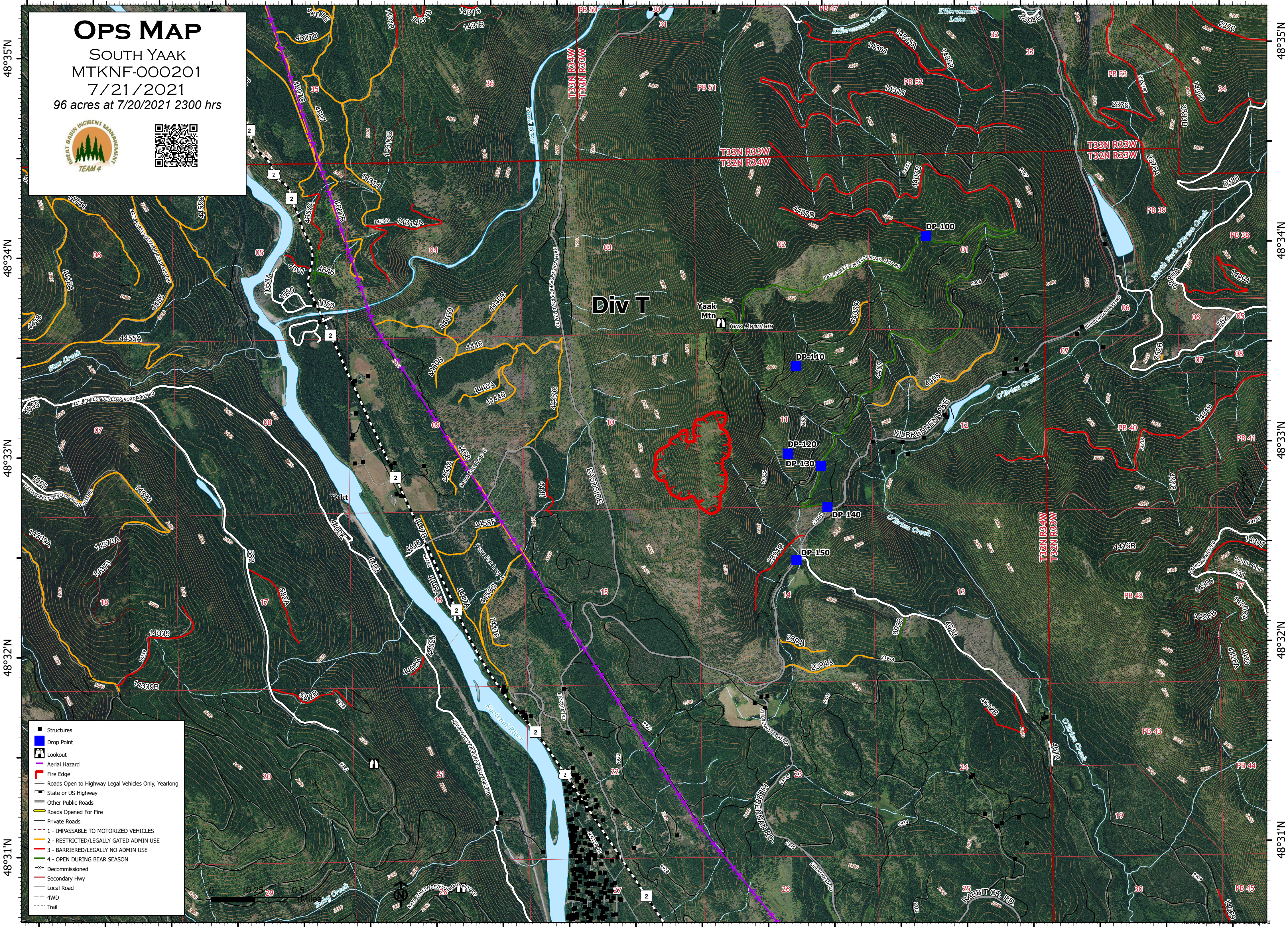
116°W 115°59'W 115°58'W 115°57'W 115°56'W 115°55'W 115°54'W 115°53'W 115°52'W

OPS MAP

SOUTH YAAK
MTKNF-000201

7/21/2021

96 acres at 7/20/2021 2300 hrs



Div T

T33N R33W
T32N R34W

T33N R33W
T32N R33W

T32N R34W
T32N R33W

- Structures
- Drop Point
- Lookout
- Aerial Hazard
- Fire Edge
- Roads Open to Highway Legal Vehicles Only, Yearlong
- State or US Highway
- Other Public Roads
- Roads Opened For Fire
- Private Roads
- - - 1 - IMPASSABLE TO MOTORIZED VEHICLES
- - - 2 - RESTRICTED/LEGALLY GATED ADMIN USE
- - - 3 - BARRIERED/LEGALLY NO ADMIN USE
- - - 4 - OPEN DURING BEAR SEASON
- X- Decommissioned
- Secondary Hwy
- Local Road
- 4WD
- - - Trail



116°W 115°59'W 115°58'W 115°57'W 115°56'W 115°55'W 115°54'W 115°53'W 115°52'W

48°35'N
48°34'N
48°33'N
48°32'N
48°31'N

48°35'N
48°34'N
48°33'N
48°32'N
48°31'N