

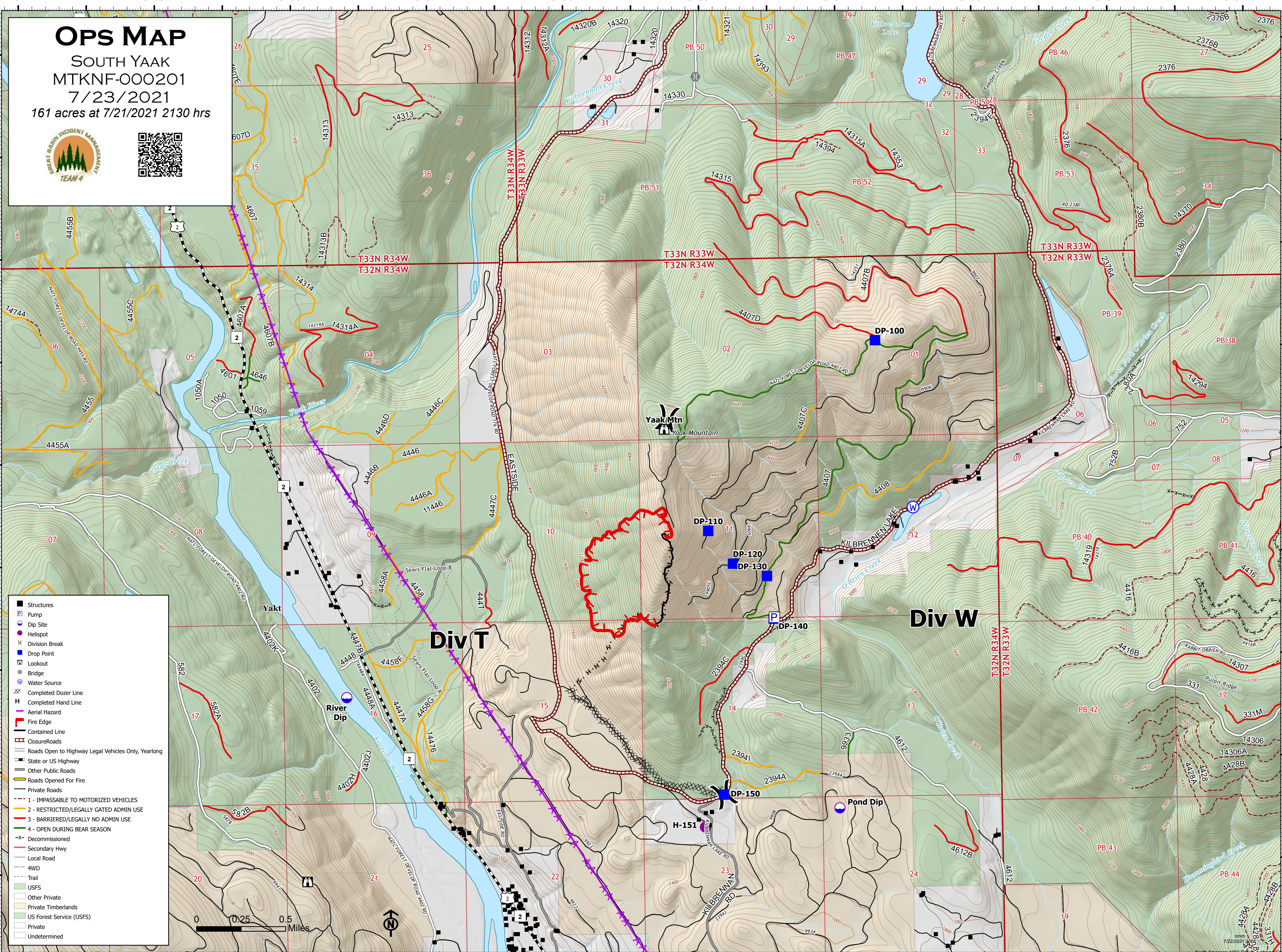
116°W 115°59'W 115°58'W 115°57'W 115°56'W 115°55'W 115°54'W 115°53'W 115°52'W 115°51.01'W

OPS MAP

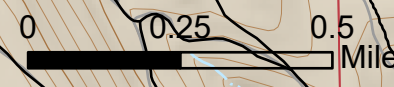
SOUTH YAAK
MTKNF-000201

7/23/2021

161 acres at 7/21/2021 2130 hrs



- Structures
- Ⓟ Pump
- Ⓧ Dip Site
- Ⓧ Helispot
- Ⓧ Division Break
- Ⓧ Drop Point
- Ⓧ Lookout
- Ⓧ Bridge
- Ⓧ Water Source
- Ⓧ Completed Dozer Line
- Ⓧ Completed Hand Line
- Ⓧ Aerial Hazard
- Ⓧ Fire Edge
- Ⓧ Contained Line
- Ⓧ Closure Roads
- Ⓧ Roads Open to Highway Legal Vehicles Only, Yearlong
- Ⓧ State or US Highway
- Ⓧ Other Public Roads
- Ⓧ Roads Opened For Fire
- Ⓧ Private Roads
- Ⓧ 1 - IMPASSABLE TO MOTORIZED VEHICLES
- Ⓧ 2 - RESTRICTED/LEGALLY GATED ADMIN USE
- Ⓧ 3 - BARRIERED/LEGALLY NO ADMIN USE
- Ⓧ 4 - OPEN DURING BEAR SEASON
- Ⓧ Decommissioned
- Ⓧ Secondary Hwy
- Ⓧ Local Road
- Ⓧ 4WD
- Ⓧ Trail
- Ⓧ USFS
- Ⓧ Other Private
- Ⓧ Private Timberlands
- Ⓧ US Forest Service (USFS)
- Ⓧ Private
- Ⓧ Undetermined



116°W 115°59'W 115°58'W 115°57'W 115°56'W 115°55'W 115°54'W 115°53'W 115°52'W 115°51.01'W