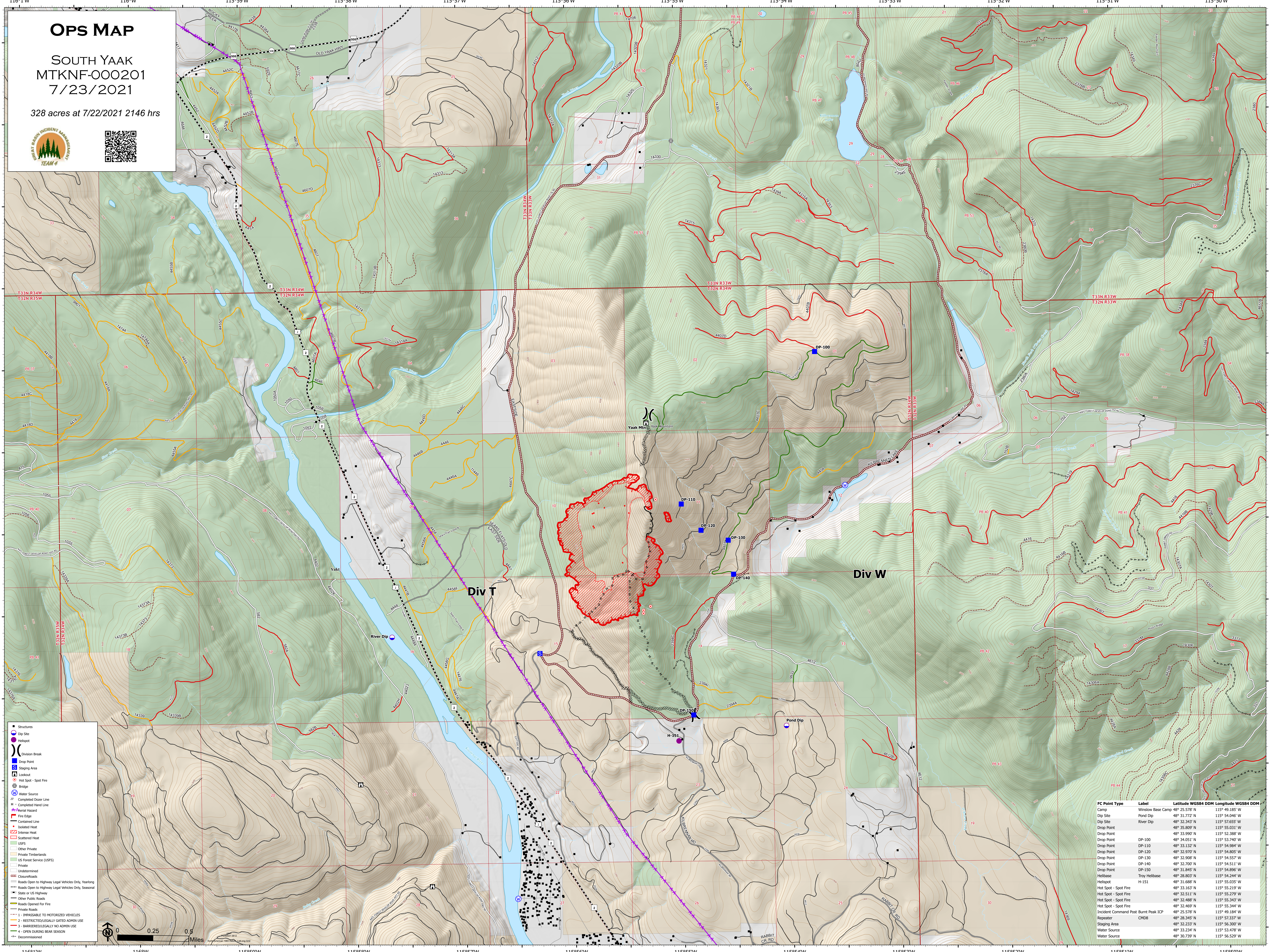


OPS MAP

SOUTH YAAK
MTKNF-000201
7/23/2021

328 acres at 7/22/2021 2146 hrs



- Structures
- Dip Site
- Hotspot
- ⎓ Division Break
- Drop Point
- Staging Area
- ⎓ Lookout
- Hot Spot - Spot Fire
- Bridge
- ⊕ Water Source
- ⊕ Completed Doser Line
- ⊕ Completed Hand Line
- ⊕ Mental Hazard
- ⊕ Fire Edge
- ⊕ Contained Line
- ⊕ Intense Heat
- ⊕ Scattered Heat
- ⊕ USFS
- ⊕ Other Private
- ⊕ Private Timberlands
- ⊕ US Forest Service (USFS)
- ⊕ Private
- ⊕ Undetermined
- ⊕ Closure/Roads
- ⊕ Roads Open to Highway Legal Vehicles Only, Yearlong
- ⊕ Roads Open to Highway Legal Vehicles Only, Seasonal
- ⊕ State or US Highway
- ⊕ Other Public Roads
- ⊕ Roads Closed for Fire
- ⊕ Private Roads
- ⊕ - IMPASSABLE TO MOTORIZED VEHICLES
- ⊕ - RESTRICTED/LEGALLY GATED ADMIN USE
- ⊕ - BARBERED/LEGALLY NO ADMIN USE
- ⊕ - OPEN DURING BEAR SEASON
- ⊕ Decommissioned

FC Point Type	Label	Latitude WGS84 DDM	Longitude WGS84 DDM
Camp	Winlow Base Camp	48° 25.578' N	115° 49.185' W
Dip Site	Pond Dip	48° 31.772' N	115° 54.646' W
Dip Site	River Dip	48° 32.343' N	115° 57.655' W
Drop Point		48° 35.809' N	115° 55.031' W
Drop Point		48° 33.990' N	115° 52.388' W
Drop Point	DP-100	48° 34.051' N	115° 52.740' W
Drop Point	DP-110	48° 33.132' N	115° 54.984' W
Drop Point	DP-120	48° 32.970' N	115° 54.895' W
Drop Point	DP-130	48° 32.908' N	115° 54.557' W
Drop Point	DP-140	48° 32.700' N	115° 54.511' W
Drop Point	DP-150	48° 31.845' N	115° 54.896' W
Hot Spot - Spot Fire	Troy Helibase	48° 28.803' N	115° 54.244' W
Hot Spot - Spot Fire	H-151	48° 31.688' N	115° 55.035' W
Hot Spot - Spot Fire		48° 33.163' N	115° 55.219' W
Hot Spot - Spot Fire		48° 32.511' N	115° 55.279' W
Hot Spot - Spot Fire		48° 32.488' N	115° 55.343' W
Hot Spot - Spot Fire		48° 32.469' N	115° 55.344' W
Hot Spot - Spot Fire	Incident Command Post Burnt Peak ICP	48° 25.578' N	115° 49.184' W
Hot Spot - Spot Fire	Repeater	48° 28.345' N	115° 52.237' W
Staging Area		48° 32.233' N	115° 56.300' W
Water Source		48° 33.234' N	115° 53.478' W
Water Source		48° 30.739' N	115° 56.529' W

