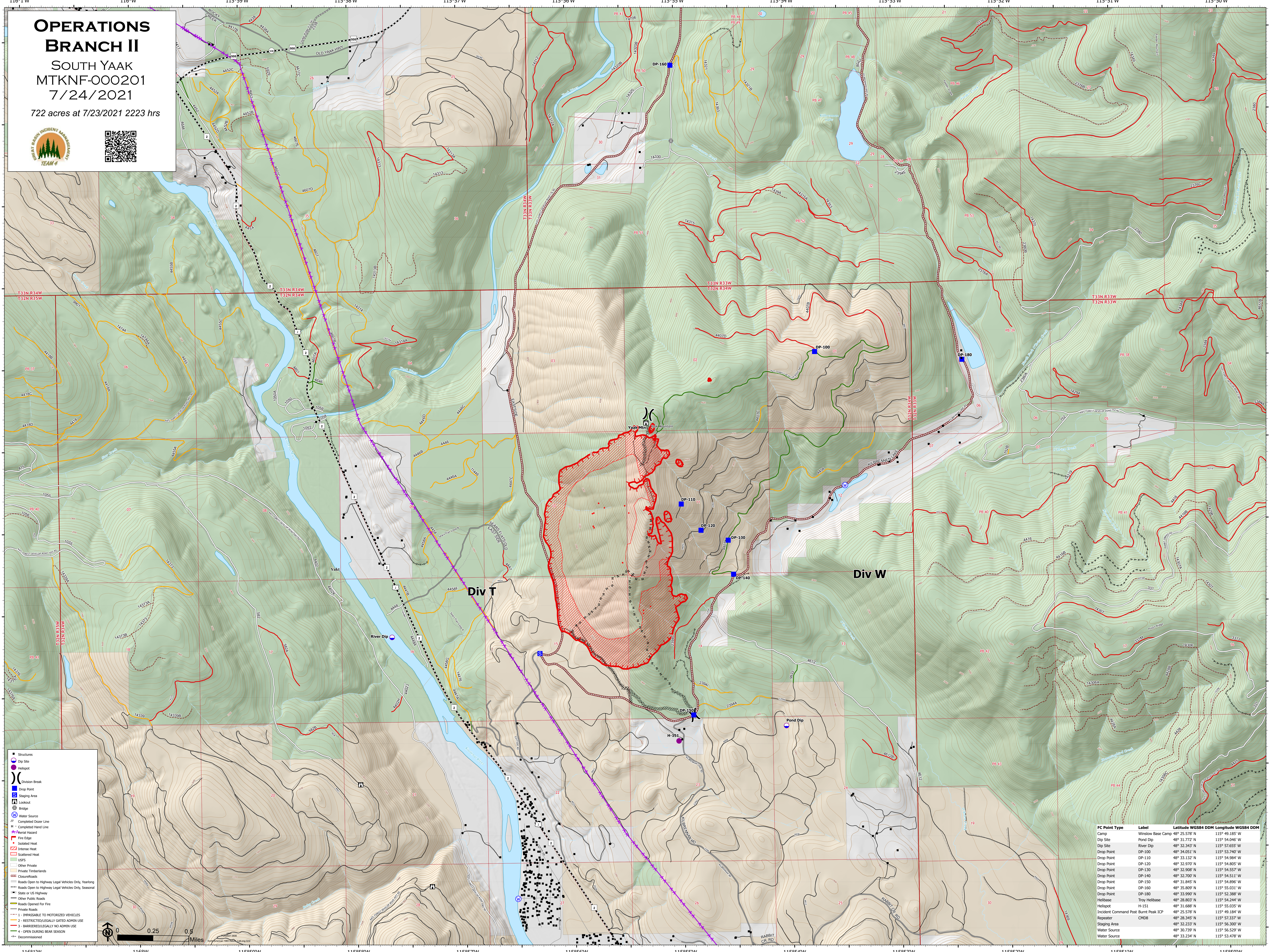


OPERATIONS BRANCH II

SOUTH YAAK
MTKNF-000201
7/24/2021

722 acres at 7/23/2021 2223 hrs



- Structures
- Dip Site
- Helispot
- ⎓ Division Break
- Drop Point
- Staging Area
- Lockout
- Bridge
- ⊕ Water Source
- ⊗ Completed Dozer Line
- ⊗ Completed Hand Line
- ⊗ Materal Hazard
- ⊗ Fire Edge
- ⊗ Isolated Heat
- ⊗ Intense Heat
- ⊗ Scattered Heat
- ⊗ USFS
- ⊗ Other Private
- ⊗ Private Timberlands
- ⊗ Closure/Roads
- ⊗ Roads Open to Highway Legal Vehicles Only, Yearlong
- ⊗ Roads Open to Highway Legal Vehicles Only, Seasonal
- ⊗ State or US Highway
- ⊗ Other Public Roads
- ⊗ Roads Cleared For Fire
- ⊗ Private Roads
- ⊗ 1 - IMPASSABLE TO MOTORIZED VEHICLES
- ⊗ 2 - RESTRICTED/LEGALLY GATED ADMIN USE
- ⊗ 3 - BARBERED/LEGALLY NO ADMIN USE
- ⊗ 4 - OPEN DURING BEAR SEASON
- ⊗ Decommissioned

FC Point Type	Label	Latitude WGS84 DDM	Longitude WGS84 DDM
Camp	Winslow Base Camp	48° 25.578' N	115° 49.185' W
Dip Site	Pond Dip	48° 31.772' N	115° 54.940' W
Dip Site	River Dip	48° 32.242' N	115° 57.655' W
Drop Point	DP-100	48° 34.051' N	115° 53.740' W
Drop Point	DP-110	48° 33.132' N	115° 54.984' W
Drop Point	DP-120	48° 32.970' N	115° 54.805' W
Drop Point	DP-130	48° 32.908' N	115° 54.557' W
Drop Point	DP-140	48° 32.700' N	115° 54.511' W
Drop Point	DP-150	48° 31.845' N	115° 54.894' W
Drop Point	DP-160	48° 35.809' N	115° 55.031' W
Drop Point	DP-180	48° 33.990' N	115° 52.388' W
Helibase	Troy Helibase	48° 28.803' N	115° 54.244' W
Helispot	H-151	48° 31.688' N	115° 55.035' W
Incident Command Post	Burnt Peak ICP	48° 25.578' N	115° 49.185' W
Repeater	CHDB	48° 28.345' N	115° 52.337' W
Staging Area		48° 32.233' N	115° 56.300' W
Water Source		48° 30.739' N	115° 56.529' W
Water Source		48° 33.234' N	115° 53.478' W

