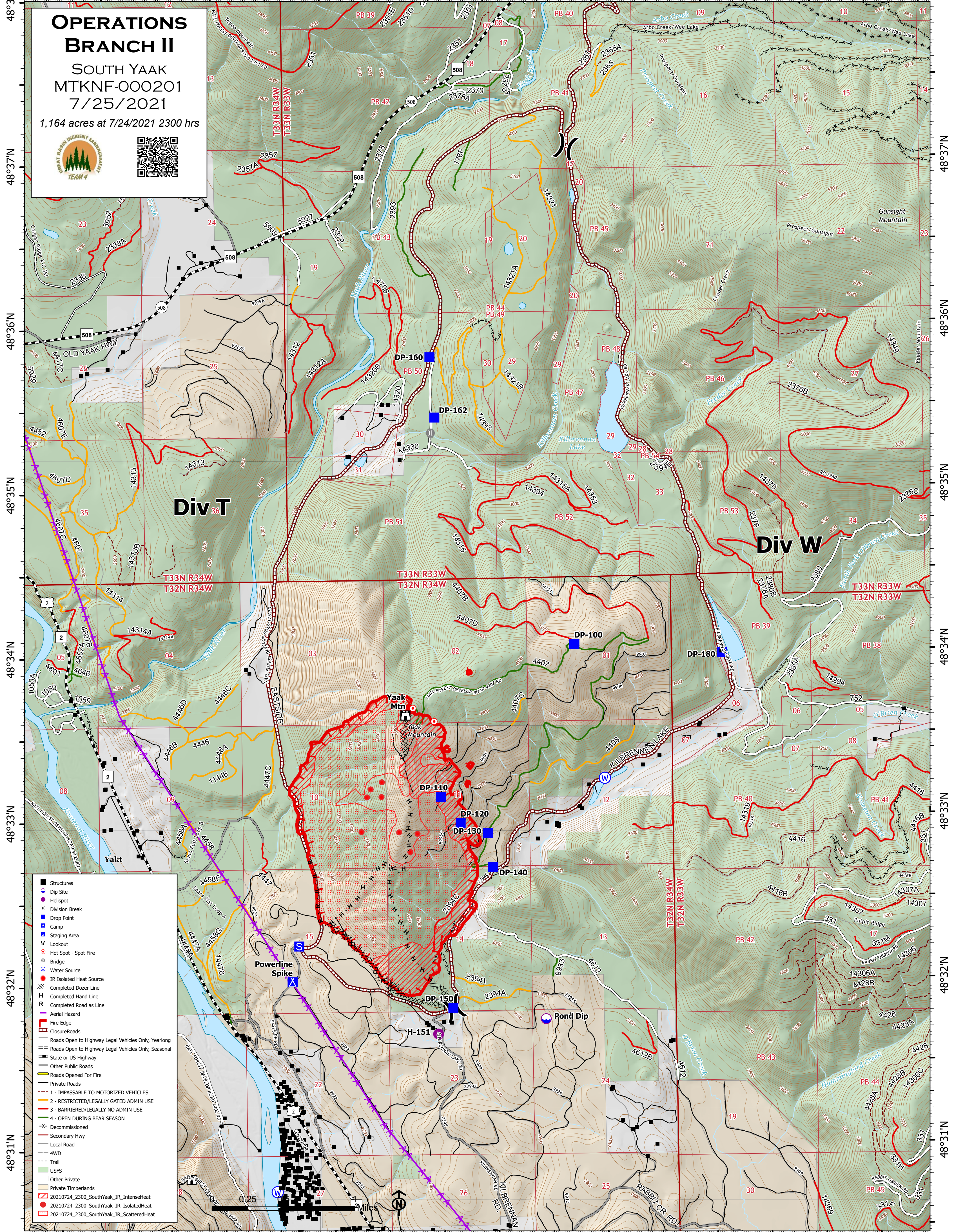


115°58'W 115°57'W 115°56'W 115°55'W 115°54'W 115°53'W 115°52'W 115°51.01'W



115°58'W 115°57'W 115°56'W 115°55'W 115°54'W 115°53'W 115°52'W 115°51.01'W

**OPERATIONS  
BRANCH II**

SOUTH YAAK  
MTKNF-000201  
7/25/2021

1,164 acres at 7/24/2021 2300 hrs




Div T

Div W

- Structures
- Dip Site
- Helispot
- Division Break
- Drop Point
- Camp
- Staging Area
- Lookout
- Hot Spot - Spot Fire
- IR Isolated Heat Source
- Completed Dozer Line
- H Completed Hand Line
- R Completed Road as Line
- Aerial Hazard
- Fire Edge
- Closure Roads
- Roads Open to Highway Legal Vehicles Only, Yearlong
- Roads Open to Highway Legal Vehicles Only, Seasonal
- State or US Highway
- Other Public Roads
- Roads Opened For Fire
- Private Roads
- 1 - IMPASSABLE TO MOTORIZED VEHICLES
- 2 - RESTRICTED/LEGALLY GATED ADMIN USE
- 3 - BARRIERED/LEGALLY NO ADMIN USE
- 4 - OPEN DURING BEAR SEASON
- x- Decommissioned
- Secondary Hwy
- Local Road
- 4WD
- Trail
- USFS
- Other Private
- Private Timberlands
- 20210724\_2300\_SouthYaak\_IR\_IntenseHeat
- 20210724\_2300\_SouthYaak\_IR\_IsolatedHeat
- 20210724\_2300\_SouthYaak\_IR\_ScatteredHeat

Powerline Spike

Pond Dip

Yaak Mtn

