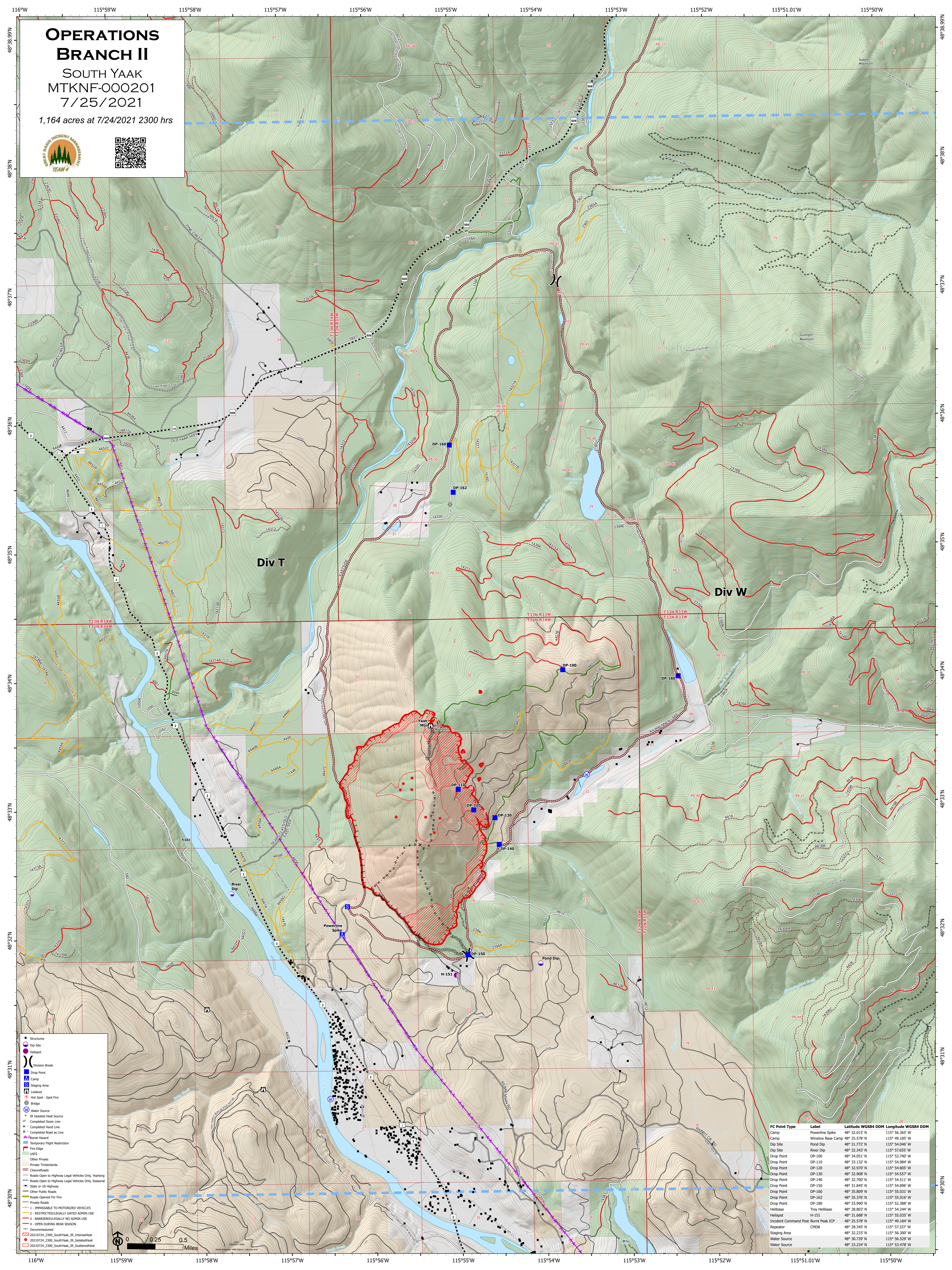


OPERATIONS BRANCH II

SOUTH YAAK
MTKNF-000201
7/25/2021

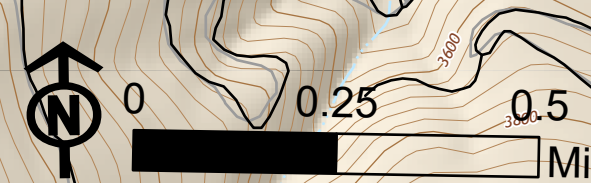
1,164 acres at 7/24/2021 2300 hrs



Div T

Div W

- Structures
- Dip Site
- Helispot
- ⊘ Division Break
- ⊘ Drop Point
- ⊘ Camp
- ⊘ Staging Area
- ⊘ Lookout
- ⊘ Hot Spot - Spot Fire
- ⊘ Bridge
- ⊘ Water Source
- ⊘ IR Isolated Heat Source
- ⊘ Private Timberlands
- ⊘ Completed Hand Line
- ⊘ Completed Road as Line
- ⊘ Material Hazard
- ⊘ Temporary Flight Restriction
- ⊘ Fire Edge
- ⊘ USFS
- ⊘ Other Private
- ⊘ Private Timberlands
- ⊘ Closed Roads
- ⊘ Roads Open to Highway Legal Vehicles Only, Yearlong
- ⊘ Roads Open to Highway Legal Vehicles Only, Seasonal
- ⊘ State or US Highway
- ⊘ Other Public Roads
- ⊘ Roads Opened for Fire
- ⊘ Private Roads
- ⊘ 1 - IMPOSSIBLE TO MOTORIZED VEHICLES
- ⊘ 2 - RESTRICTION LEGALLY GATED ADMIN USE
- ⊘ 3 - BARRIERS/LEGALLY NO ADMIN USE
- ⊘ 4 - OPEN DURING BEAR SEASON
- ⊘ Decommissioned
- ⊘ 20210724_2300_SouthYyak_IR_IsolatedHeat
- ⊘ 20210724_2300_SouthYyak_IR_IsolatedHeat
- ⊘ 20210724_2300_SouthYyak_IR_ScatteredHeat



FC Point Type	Label	Latitude WGS84 DDM	Longitude WGS84 DDM
Camp	Powerline Spike	48° 32.015' N	115° 56.365' W
Camp	Window Base Camp	48° 25.578' N	115° 49.185' W
Dip Site	Pond Dip	48° 31.772' N	115° 54.046' W
Dip Site	River Dip	48° 32.243' N	115° 57.653' W
Drop Point	DP-100	48° 34.051' N	115° 53.740' W
Drop Point	DP-110	48° 33.132' N	115° 54.984' W
Drop Point	DP-120	48° 32.970' N	115° 54.805' W
Drop Point	DP-130	48° 32.908' N	115° 54.557' W
Drop Point	DP-140	48° 32.700' N	115° 54.511' W
Drop Point	DP-150	48° 31.845' N	115° 54.886' W
Drop Point	DP-160	48° 35.809' N	115° 55.031' W
Drop Point	DP-162	48° 35.376' N	115° 55.016' W
Drop Point	DP-180	48° 33.990' N	115° 52.388' W
Helibase	Troy Helibase	48° 28.803' N	115° 54.244' W
Helipoc	H-151	48° 31.688' N	115° 55.035' W
Incident Command Post	Burnt Peak ICP	48° 25.578' N	115° 49.184' W
Repeater	CM98	48° 28.345' N	115° 57.317' W
Staging Area		48° 32.233' N	115° 56.300' W
Water Source		48° 30.739' N	115° 56.529' W
Water Source		48° 33.234' N	115° 53.478' W