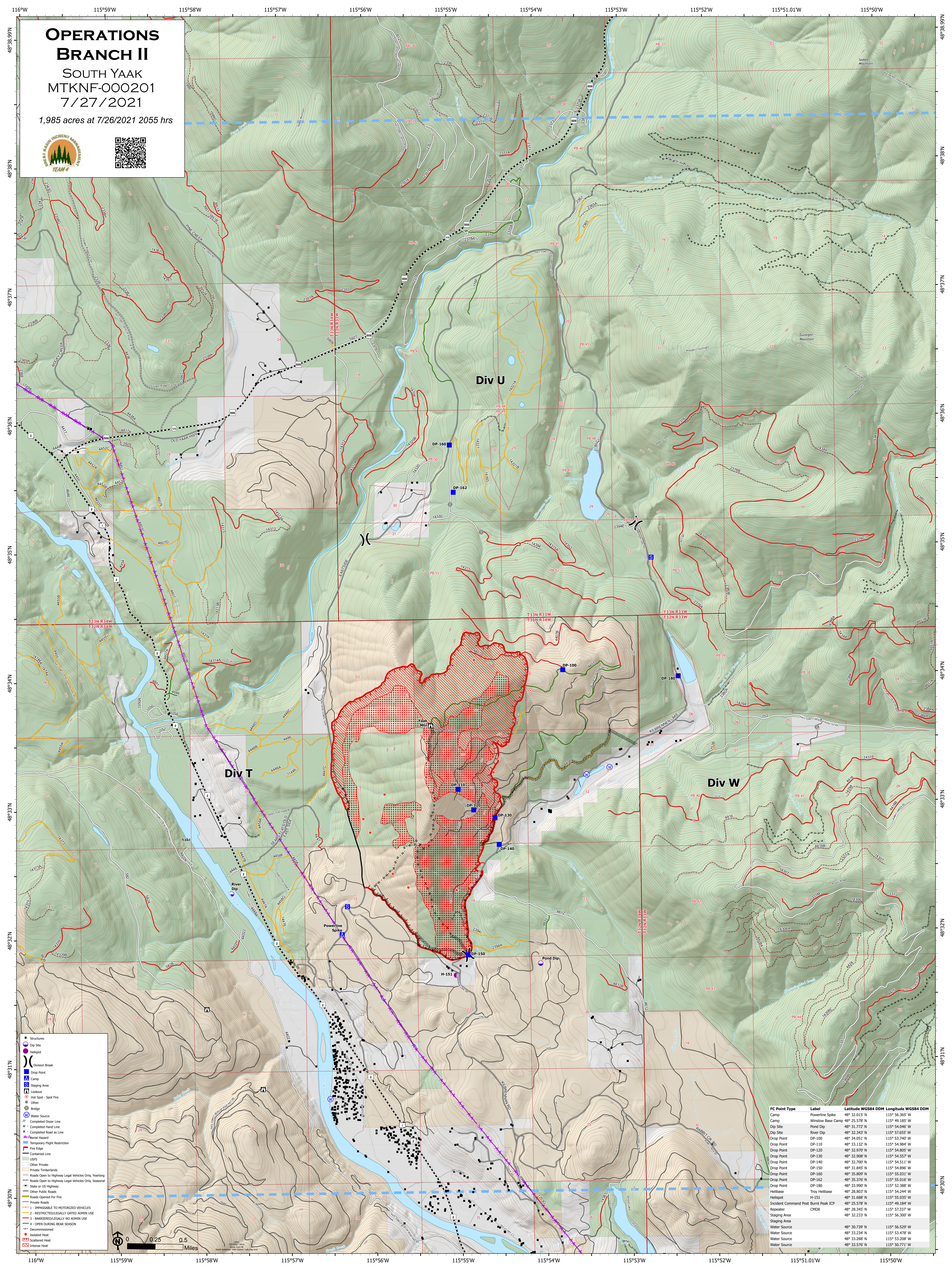


OPERATIONS BRANCH II

SOUTH YAAK
MTKNF-000201
7/27/2021

1,985 acres at 7/26/2021 2055 hrs



- Structures
- Dip Site
- Helispot
- Division Break
- Drop Point
- Camp
- Staging Area
- Lookout
- Hot Spot - Spot Fire
- Other
- Bridge
- Water Source
- Completed Deter Line
- H - Completed Hand Line
- R - Completed Road as Line
- Material Hazard
- Temporary Flight Restriction
- Fire Edge
- Contained Line
- USFS
- Other Private
- Private Timberlands
- Roads Open to Highway Legal Vehicles Only, Yearlong
- Roads Open to Highway Legal Vehicles Only, Seasonal
- State or US Highway
- Barrier/legally no admn use
- 4 - OPEN DURING BEAR SEASON
- Private Roads
- 1 - IMPOSSIBLE TO MOTORIZED VEHICLES
- 2 - RESTRICTION/LEGALLY GATED ADMIN USE
- 3 - BARRIER/LEGALLY NO ADMIN USE
- 4 - OPEN DURING BEAR SEASON
- Decommissioned
- Scattered Heat
- Intense Heat

FC Point Type	Label	Latitude WGS84 DDM	Longitude WGS84 DDM
Camp	Powerline Spike	48° 32.015' N	115° 56.365' W
Camp	Window Base Camp	48° 25.578' N	115° 49.185' W
Dip Site	Pond Dip	48° 31.772' N	115° 54.046' W
Dip Site	River Dip	48° 32.343' N	115° 57.655' W
Drop Point	DP-100	48° 34.051' N	115° 53.740' W
Drop Point	DP-110	48° 33.132' N	115° 54.864' W
Drop Point	DP-120	48° 32.970' N	115° 54.885' W
Drop Point	DP-130	48° 32.908' N	115° 54.557' W
Drop Point	DP-140	48° 32.700' N	115° 54.511' W
Drop Point	DP-150	48° 31.845' N	115° 54.896' W
Drop Point	DP-160	48° 35.809' N	115° 55.031' W
Drop Point	DP-162	48° 35.376' N	115° 55.016' W
Drop Point	DP-180	48° 33.998' N	115° 53.288' W
Drop Point	Troy Helibase	48° 28.803' N	115° 54.244' W
Helispot	H-151	48° 31.688' N	115° 55.035' W
Incident Command Post	Burnt Peak ICP	48° 25.578' N	115° 49.184' W
Repeater	CMDR	48° 28.345' N	115° 57.337' W
Staging Area		48° 32.233' N	115° 56.300' W
Water Source		48° 30.739' N	115° 56.529' W
Water Source		48° 33.234' N	115° 53.478' W
Water Source		48° 33.288' N	115° 53.208' W
Water Source		48° 33.576' N	115° 50.771' W