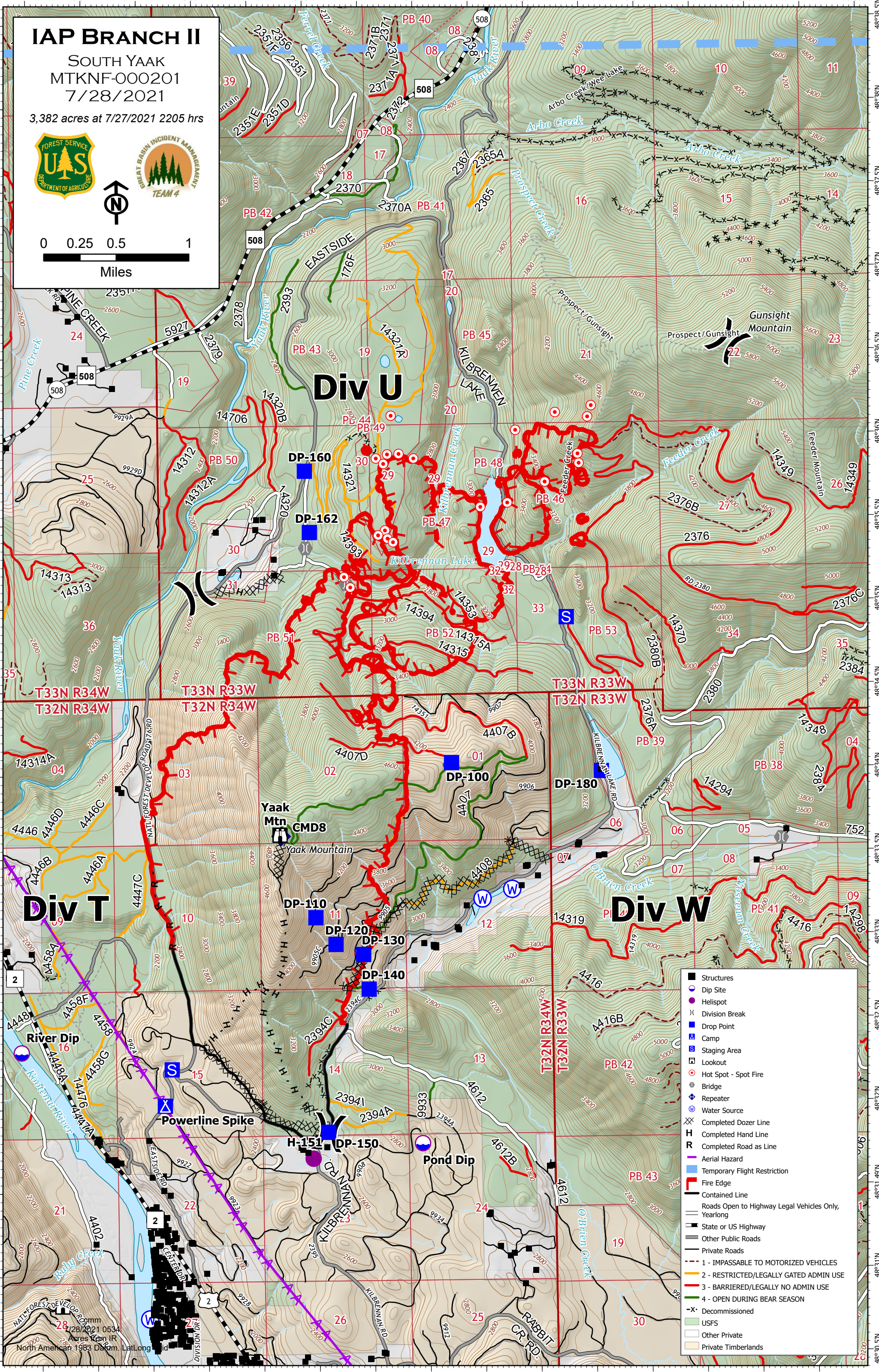
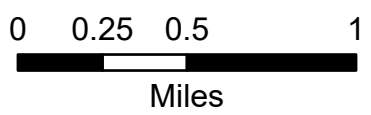


IAP BRANCH II

SOUTH YAAK
MTKNF-000201
7/28/2021

3,382 acres at 7/27/2021 2205 hrs



- Structures
- Dip Site
- Helispot
- Division Break
- Drop Point
- Camp
- Staging Area
- Lookout
- Hot Spot - Spot Fire
- Bridge
- Repeater
- Water Source
- Completed Dozer Line
- Completed Hand Line
- Completed Road as Line
- Aerial Hazard
- Temporary Flight Restriction
- Fire Edge
- Contained Line
- Roads Open to Highway Legal Vehicles Only, Yearlong
- State or US Highway
- Other Public Roads
- Private Roads
- 1 - IMPASSABLE TO MOTORIZED VEHICLES
- 2 - RESTRICTED/LEGALLY GATED ADMIN USE
- 3 - BARRIERED/LEGALLY NO ADMIN USE
- 4 - OPEN DURING BEAR SEASON
- X - Decommissioned
- USFS
- Other Private
- Private Timberlands

NATL FOREST DEVELOP. ROAD 176 RD
7/28/2021 0534
Acres from IR
North American 1983 Datum, Lat/Long, UTM