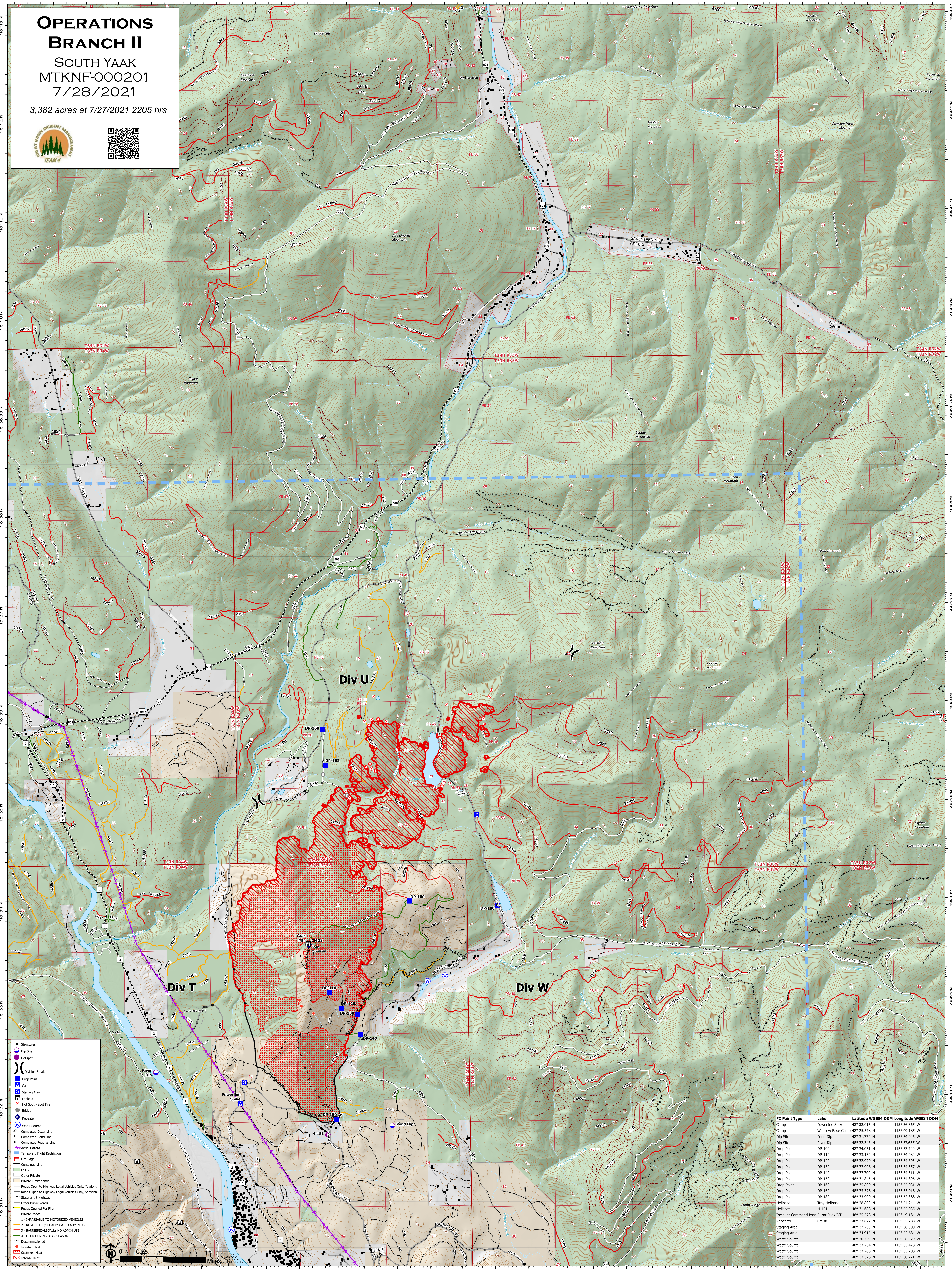


OPERATIONS BRANCH II

SOUTH YAAK
MTKNF-000201
7/28/2021

3,382 acres at 7/27/2021 2205 hrs



FC Point Type	Label	Latitude WGS84 DDM	Longitude WGS84 DDM
Powerline Spike	Powerline Spike	48° 32.015' N	115° 56.363' W
Camp	Window Base Camp	48° 25.578' N	115° 49.185' W
Camp	Window Base Camp	48° 31.772' N	115° 54.046' W
Dip Site	Pond Dip	48° 32.343' N	115° 57.655' W
Dip Site	River Dip	48° 32.343' N	115° 57.655' W
Drop Point	DP-100	48° 34.051' N	115° 53.740' W
Drop Point	DP-110	48° 33.132' N	115° 54.894' W
Drop Point	DP-120	48° 32.970' N	115° 54.885' W
Drop Point	DP-130	48° 32.908' N	115° 54.557' W
Drop Point	DP-140	48° 32.700' N	115° 54.511' W
Drop Point	DP-150	48° 31.845' N	115° 54.896' W
Drop Point	DP-160	48° 35.809' N	115° 55.031' W
Drop Point	DP-162	48° 35.376' N	115° 55.016' W
Drop Point	DP-180	48° 34.931' N	115° 53.288' W
Helibase	Troy Helibase	48° 28.803' N	115° 54.244' W
Helispot	H-151	48° 31.688' N	115° 55.035' W
Incident Command Post	Burnt Peak ICP	48° 25.578' N	115° 49.184' W
Repeater	CMD8	48° 33.622' N	115° 55.288' W
Staging Area	Staging Area	48° 32.233' N	115° 56.300' W
Water Source	Water Source	48° 34.931' N	115° 53.288' W
Water Source	Water Source	48° 30.739' N	115° 56.529' W
Water Source	Water Source	48° 33.234' N	115° 53.478' W
Water Source	Water Source	48° 33.288' N	115° 53.288' W
Water Source	Water Source	48° 33.576' N	115° 50.771' W