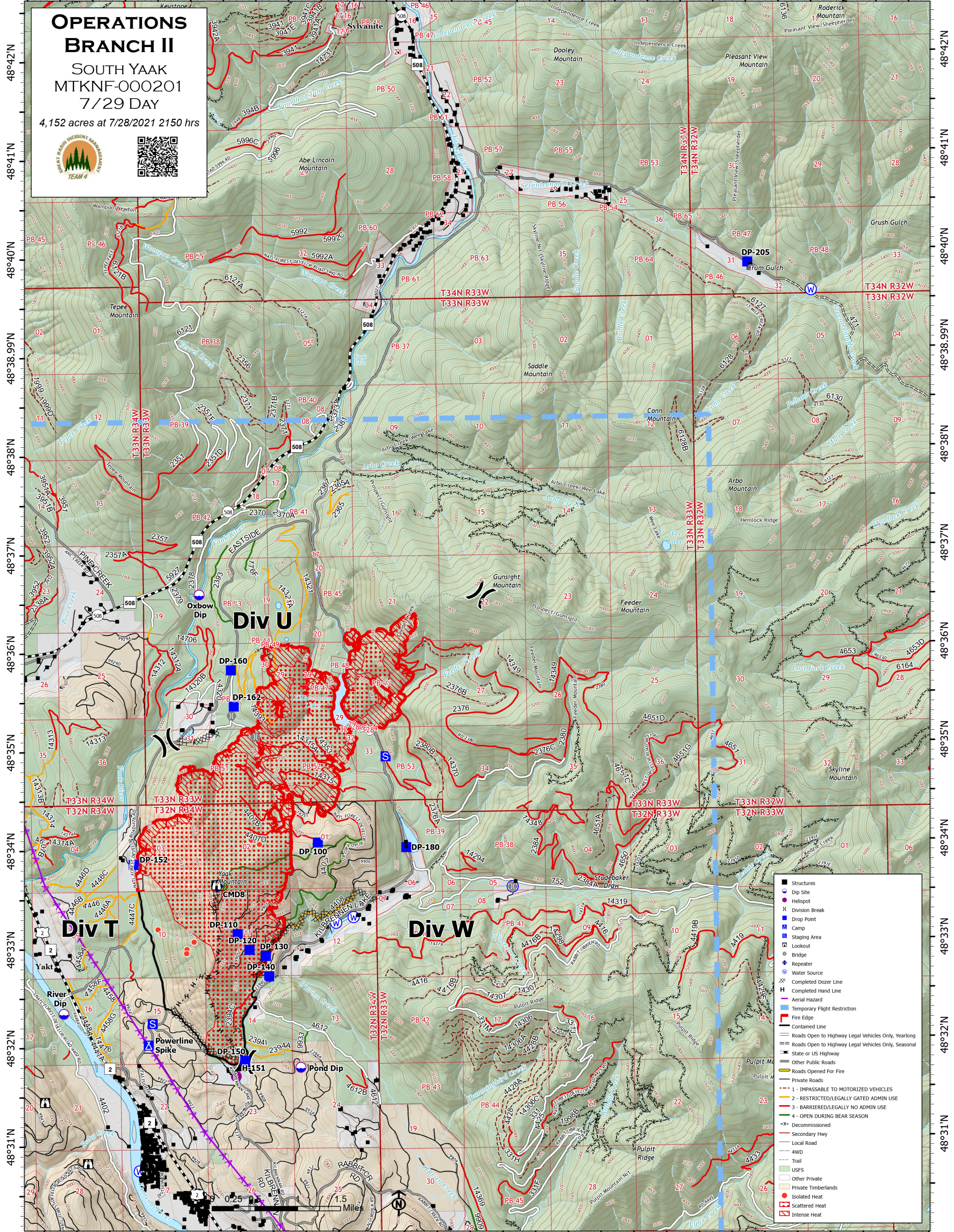




115°58'W 115°57'W 115°56'W 115°55'W 115°54'W 115°53'W 115°52'W 115°51.01'W 115°50'W 115°49'W 115°48'W 115°47'W 115°46'W 115°45'W



**OPERATIONS
BRANCH II**

SOUTH YAAK
MTKNF-000201
7/29 DAY

4,152 acres at 7/28/2021 2150 hrs

- Structures
- Dip Site
- Hellsite
- ⌘ Division Break
- Drop Point
- Camp
- Staging Area
- Lookout
- Bridge
- ◆ Repeater
- Water Source
- XX Completed Dozer Line
- H Completed Hand Line
- Aerial Hazard
- Temporary Flight Restriction
- Fire Edge
- Contained Line
- Roads Open to Highway Legal Vehicles Only, Yearlong
- Roads Open to Highway Legal Vehicles Only, Seasonal
- State or US Highway
- Other Public Roads
- Roads Opened For Fire
- Private Roads
- 1 - IMPASSABLE TO MOTORIZED VEHICLES
- 2 - RESTRICTED/LEGALLY GATED ADMIN USE
- 3 - BARRIERED/LEGALLY NO ADMIN USE
- 4 - OPEN DURING BEAR SEASON
- X Decommissioned
- Secondary Hwy
- Local Road
- 4WD
- Trail
- USFS
- Other Private
- Private Timberlands
- Isolated Heat
- Scattered Heat
- Intense Heat

115°58'W 115°57'W 115°56'W 115°55'W 115°54'W 115°53'W 115°52'W 115°51.01'W 115°50'W 115°49'W 115°48'W 115°47'W 115°46'W 115°45'W