

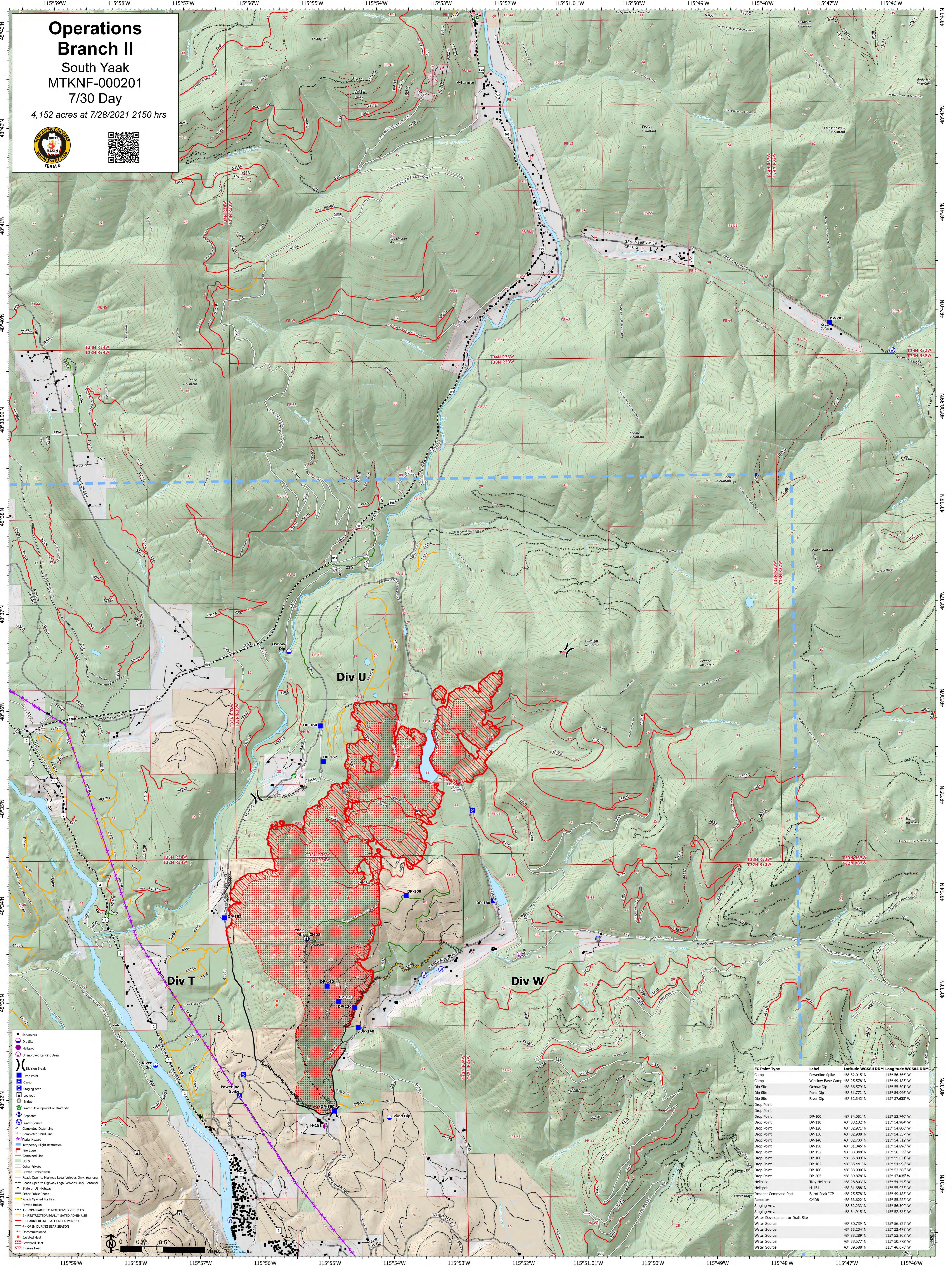
Operations Branch II

South Yaak

MTKNF-000201

7/30 Day

4,152 acres at 7/28/2021 2150 hrs



- Structures
- Dip Site
- Hotspot
- Improvised Landing Area
- Division Break
- Drop Point
- Camp
- Staging Area
- Lookout
- Water Development or Draft Site
- Water Source
- Completed Doser Line
- Completed Hand Line
- Fire Edge
- Other Private
- Other Public Roads
- Roads Open to Highway Legal Vehicles Only, Yearlong
- Roads Open to Highway Legal Vehicles Only, Seasonal
- State or US Highway
- Other Public Roads
- Roads Opened For Fire
- Private Roads
- Restrictable to Motorized Vehicles
- Restricted/Legally Gated Admin Use
- Barred During Bear Season
- Decommissioned
- Isolated Heat
- Scattered Heat
- Intense Heat

FC Point Type	Label	Latitude WGS84 DDM	Longitude WGS84 DDM
Camp	Powerline Spike	48° 32.015' N	115° 56.360' W
Camp	Window Base Camp	48° 25.578' N	115° 49.185' W
Dip Site	Oxbow Dip	48° 36.579' N	115° 55.501' W
Dip Site	Pond Dip	48° 31.772' N	115° 54.046' W
Dip Site	River Dip	48° 32.343' N	115° 57.655' W
Drop Point	DP-100	48° 34.051' N	115° 53.740' W
Drop Point	DP-110	48° 33.132' N	115° 54.984' W
Drop Point	DP-120	48° 32.971' N	115° 54.806' W
Drop Point	DP-130	48° 32.908' N	115° 54.557' W
Drop Point	DP-140	48° 32.700' N	115° 54.512' W
Drop Point	DP-150	48° 31.885' N	115° 54.898' W
Drop Point	DP-152	48° 33.848' N	115° 56.559' W
Drop Point	DP-160	48° 35.809' N	115° 55.031' W
Drop Point	DP-162	48° 35.441' N	115° 54.994' W
Drop Point	DP-180	48° 33.990' N	115° 52.388' W
Drop Point	DP-205	48° 39.878' N	115° 47.035' W
Helibase	Troy Helibase	48° 28.803' N	115° 54.245' W
Helibase	H-151	48° 31.688' N	115° 55.035' W
Incident Command Post	Burnt Peak ICP	48° 25.578' N	115° 49.185' W
Repeater	CMD8	48° 33.622' N	115° 55.288' W
Staging Area	Water Source	48° 32.233' N	115° 56.300' W
Staging Area	Water Source	48° 34.915' N	115° 52.685' W
Water Development or Draft Site	Water Source	48° 30.739' N	115° 56.529' W
Water Source	Water Source	48° 33.234' N	115° 53.478' W
Water Source	Water Source	48° 33.289' N	115° 53.208' W
Water Source	Water Source	48° 33.577' N	115° 50.772' W
Water Source	Water Source	48° 39.588' N	115° 46.070' W

