

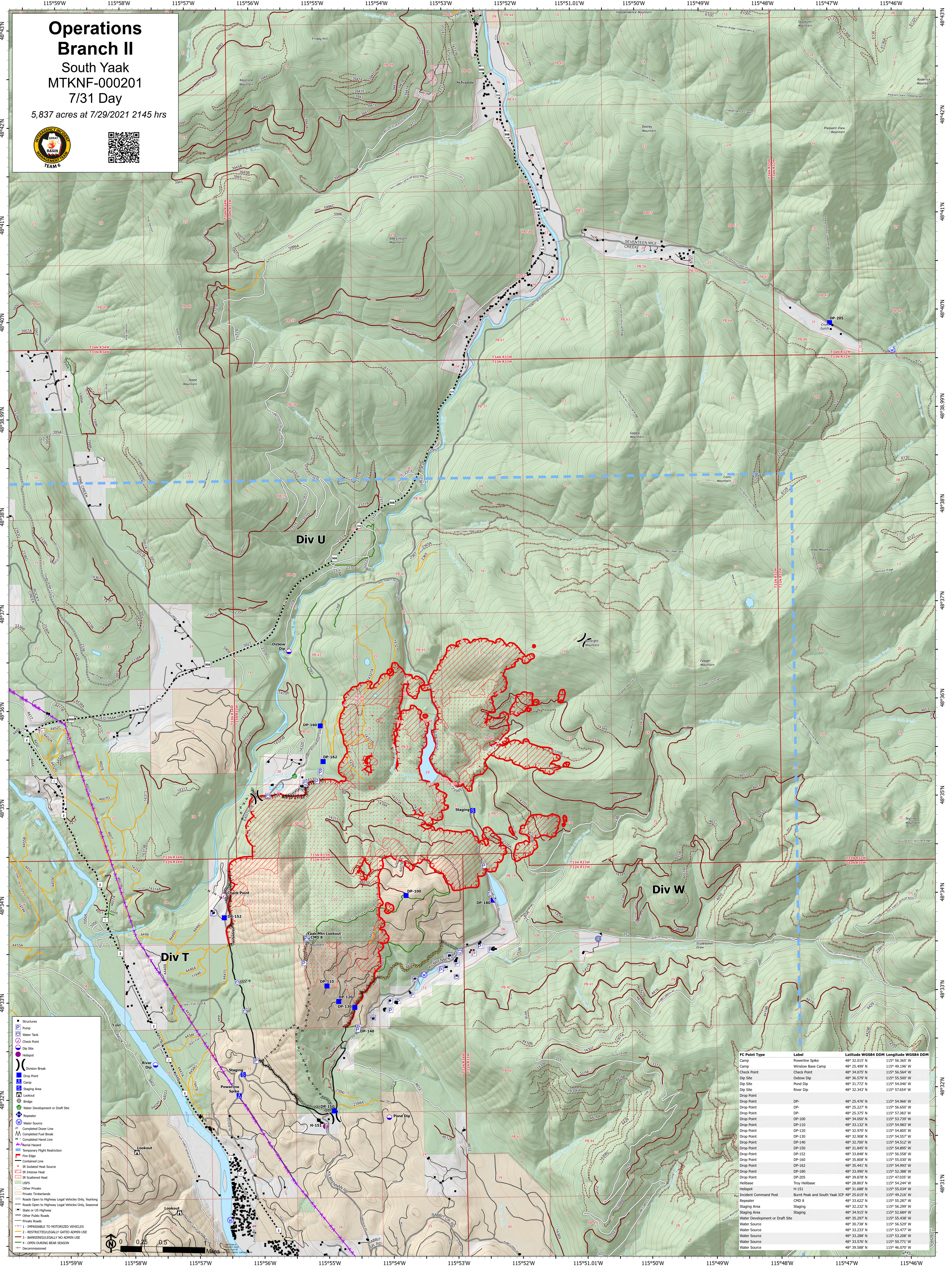
Operations Branch II

South Yaak

MTKNF-000201

7/31 Day

5,837 acres at 7/29/2021 2145 hrs



- Structures
- Pump
- Water Tank
- Check Point
- Site
- Dip Site
- Pond Dip
- River Dip
- Drop Point
- Camp
- Staging Area
- Lookout
- Bridge
- Water Development or Draft Site
- Repeater
- Water Source
- Completed Dozer Line
- Completed Fuel Break
- Completed Hand Line
- Aerial Hazard
- Temporary Flight Restriction
- Fire Edge
- IR Isolated Heat Source
- IR Intense Heat
- IR Scattered Heat
- USFS
- Other Private
- Private Timberlands
- Roads Open to Highway Legal Vehicles Only, Yearlong
- Roads Open to Highway Legal Vehicles Only, Seasonal
- State or US Highway
- Other Public Roads
- Private Roads
- 1 - IMPASSABLE TO MOTORIZED VEHICLES
- 2 - RESTRICTED/LEGALLY GATED ADMIN USE
- 3 - BARRIERED/LEGALLY NO ADMIN USE
- 4 - OPEN DURING BEAR SEASON
- Decommissioned



FC Point Type	Label	Latitude WGS84 DDM	Longitude WGS84 DDM
Powerline Spike	Powerline Spike	48° 32.015' N	115° 56.365' W
Camp	Window Base Camp	48° 25.499' N	115° 49.196' W
Check Point	Check Point	48° 34.075' N	115° 56.564' W
Dip Site	Oxbow Dip	48° 36.579' N	115° 55.500' W
Dip Site	Pond Dip	48° 31.772' N	115° 54.046' W
River Dip	River Dip	48° 32.343' N	115° 57.654' W
Drop Point	DP-	48° 25.476' N	115° 54.966' W
Drop Point	DP-	48° 25.227' N	115° 56.650' W
Drop Point	DP-	48° 25.375' N	115° 57.383' W
Drop Point	DP-100	48° 34.689' N	115° 53.799' W
Drop Point	DP-110	48° 33.132' N	115° 54.983' W
Drop Point	DP-120	48° 32.970' N	115° 54.805' W
Drop Point	DP-130	48° 32.908' N	115° 54.557' W
Drop Point	DP-140	48° 32.700' N	115° 54.512' W
Drop Point	DP-150	48° 31.845' N	115° 54.895' W
Drop Point	DP-152	48° 33.848' N	115° 56.504' W
Drop Point	DP-160	48° 35.808' N	115° 55.030' W
Drop Point	DP-162	48° 35.441' N	115° 54.993' W
Drop Point	DP-180	48° 33.990' N	115° 52.388' W
Drop Point	DP-205	48° 39.878' N	115° 47.035' W
Helibase	Troy Helibase	48° 28.803' N	115° 54.244' W
Helibase	H-151	48° 31.688' N	115° 55.034' W
Incident Command Post	Burnt Peak and South Yaak ICP	48° 26.619' N	115° 49.216' W
Repeater	CMD 8	48° 33.622' N	115° 55.287' W
Staging Area	Staging Area	48° 32.232' N	115° 56.299' W
Staging Area	Staging Area	48° 34.915' N	115° 52.684' W
Water Development or Draft Site		48° 35.297' N	115° 55.438' W
Water Source		48° 30.787' N	115° 56.520' W
Water Source		48° 33.233' N	115° 53.477' W
Water Source		48° 33.288' N	115° 53.208' W
Water Source		48° 33.576' N	115° 50.771' W
Water Source		48° 39.588' N	115° 46.070' W