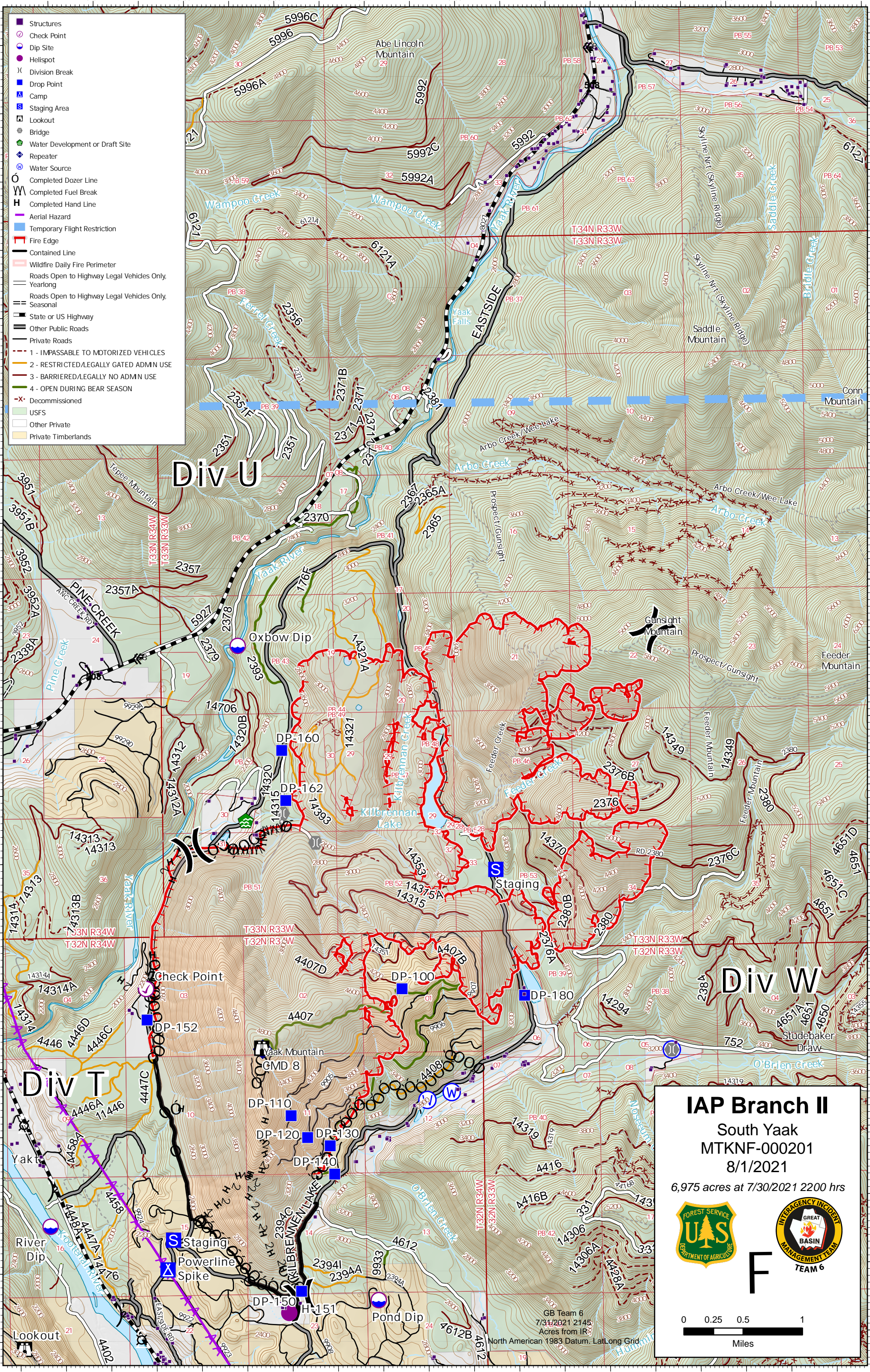




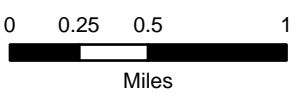
- Structures
- Check Point
- Dip Site
- Helispot
- ⌘ Division Break
- Drop Point
- ▲ Camp
- Staging Area
- ⌘ Lookout
- ⊙ Bridge
- ⊙ Water Development or Draft Site
- ⊙ Repeater
- ⊙ Water Source
- Completed Dozer Line
- Completed Fuel Break
- Completed Hand Line
- Aerial Hazard
- Temporary Flight Restriction
- Fire Edge
- Contained Line
- Wildfire Daily Fire Perimeter
- Roads Open to Highway Legal Vehicles Only, Yearlong
- Roads Open to Highway Legal Vehicles Only, Seasonal
- State or US Highway
- Other Public Roads
- Private Roads
- 1 - IMPASSABLE TO MOTORIZED VEHICLES
- 2 - RESTRICTED/LEGALLY GATED ADMN USE
- 3 - BARRIERED/LEGALLY NO ADMN USE
- 4 - OPEN DURING BEAR SEASON
- Decommissioned
- USFS
- Other Private
- Private Timberlands



IAP Branch II
 South Yaak
 MTKNF-000201
 8/1/2021
 6,975 acres at 7/30/2021 2200 hrs

F



Miles

GB Team 6
 7/31/2021 2145
 Acres from IR
 North American 1983 Datum, Lat/Long Grid