

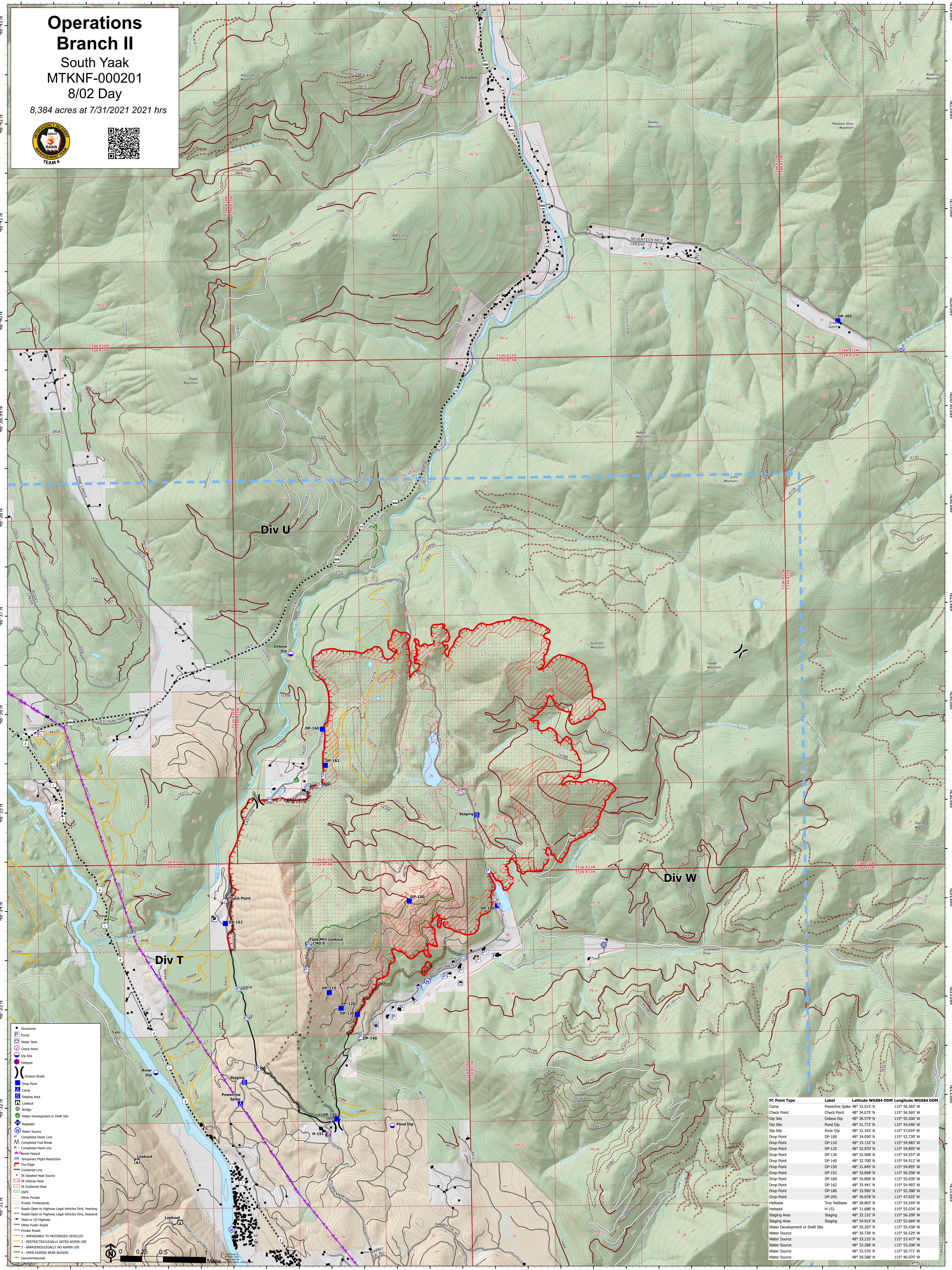
Operations Branch II

South Yaak

MTKNF-000201

8/02 Day

8,384 acres at 7/31/2021 2021 hrs



| FC Point Type | Label | Latitude WGS84 DDM | Longitude WGS84 DDM |
|---------------------------------|-----------------|--------------------|---------------------|
| Camp | Powerline Spike | 48° 32.015' N | 115° 56.365' W |
| Check Point | Check Point | 48° 34.075' N | 115° 56.565' W |
| Dip Site | Oxbow Dip | 48° 36.575' N | 115° 55.500' W |
| Dip Site | Pond Dip | 48° 31.772' N | 115° 54.046' W |
| Dip Site | River Dip | 48° 32.343' N | 115° 57.654' W |
| Drop Point | DP-100 | 48° 34.050' N | 115° 53.739' W |
| Drop Point | DP-110 | 48° 33.132' N | 115° 54.983' W |
| Drop Point | DP-120 | 48° 32.970' N | 115° 54.805' W |
| Drop Point | DP-130 | 48° 32.960' N | 115° 54.557' W |
| Drop Point | DP-140 | 48° 32.700' N | 115° 54.512' W |
| Drop Point | DP-150 | 48° 31.845' N | 115° 54.895' W |
| Drop Point | DP-152 | 48° 33.848' N | 115° 56.588' W |
| Drop Point | DP-160 | 48° 35.808' N | 115° 55.030' W |
| Drop Point | DP-162 | 48° 35.441' N | 115° 54.993' W |
| Drop Point | DP-180 | 48° 33.990' N | 115° 52.388' W |
| Drop Point | DP-205 | 48° 39.878' N | 115° 47.051' W |
| Helispot | Troy Helibase | 48° 28.803' N | 115° 54.244' W |
| Helispot | H-151 | 48° 31.688' N | 115° 55.034' W |
| Staging Area | Staging | 48° 32.232' N | 115° 56.299' W |
| Staging Area | Staging | 48° 34.915' N | 115° 52.684' W |
| Water Development or Draft Site | | 48° 35.250' N | 115° 55.438' W |
| Water Source | | 48° 30.728' N | 115° 55.529' W |
| Water Source | | 48° 33.233' N | 115° 53.477' W |
| Water Source | | 48° 33.288' N | 115° 53.208' W |
| Water Source | | 48° 33.576' N | 115° 50.771' W |
| Water Source | | 48° 39.588' N | 115° 46.070' W |