

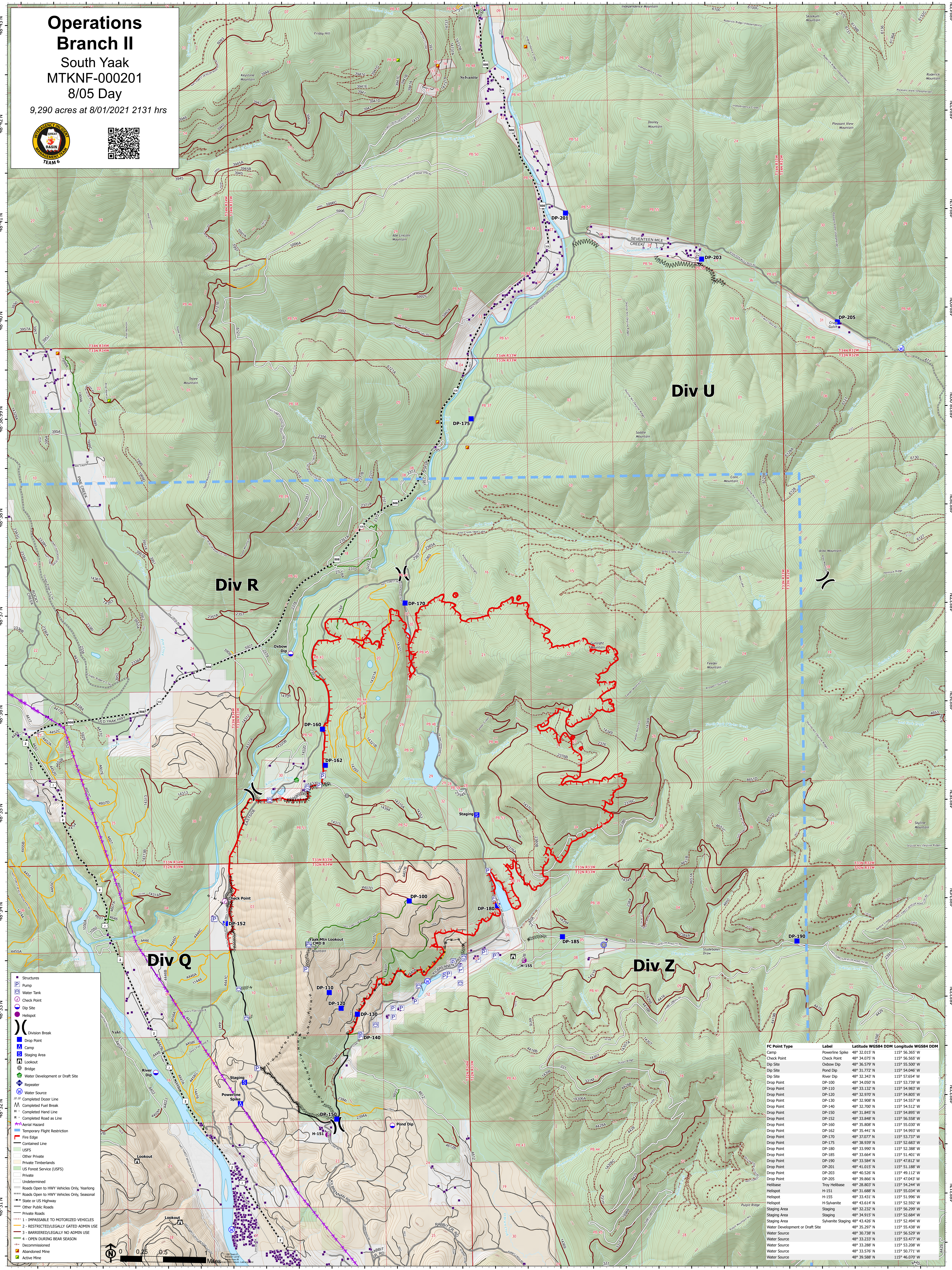
# Operations Branch II

## South Yaak

### MTKNF-000201

#### 8/05 Day

9,290 acres at 8/01/2021 2131 hrs



- Structures
- Pump
- Water Tank
- Check Point
- Dip Site
- Helispot
- Division Break
- Drop Point
- Camp
- Staging Area
- Lookout
- Bridge
- Water Development or Draft Site
- Repeater
- Water Source
- Completed Dozer Line
- Completed Fuel Break
- Completed Hand Line
- Completed Road as Line
- Aerial Hazard
- Temporary Flight Restriction
- Fire Edge
- Contained Line
- USFS
- Other Private
- Private Timberlands
- US Forest Service (USFS)
- Undetermined
- Roads Open to HMY Vehicles Only, Yearlong
- Roads Open to HMY Vehicles Only, Seasonal
- State or US Highway
- Other Public Roads
- Private Roads
- 1 - IMPASSABLE TO MOTORIZED VEHICLES
- 2 - RESTRICTED/LEGALLY GATED ADMIN USE
- 3 - BARRIERED/LEGALLY NO ADMIN USE
- 4 - OPEN DURING BEAR SEASON
- Decommissioned
- Abandoned Mine
- Active Mine



FC Point Type	Label	Latitude WGS84 DDM	Longitude WGS84 DDM
Camp	Powerline Spike	48° 32.015' N	115° 56.365' W
Check Point	Check Point	48° 34.075' N	115° 56.565' W
Dip Site	Oxbow Dip	48° 36.579' N	115° 55.500' W
Dip Site	Pond Dip	48° 31.772' N	115° 54.046' W
Dip Site	River Dip	48° 32.343' N	115° 57.654' W
Drop Point	DP-100	48° 34.050' N	115° 53.739' W
Drop Point	DP-110	48° 33.122' N	115° 54.883' W
Drop Point	DP-120	48° 32.970' N	115° 54.805' W
Drop Point	DP-130	48° 32.908' N	115° 54.557' W
Drop Point	DP-140	48° 32.700' N	115° 54.512' W
Drop Point	DP-150	48° 31.845' N	115° 54.895' W
Drop Point	DP-152	48° 33.848' N	115° 56.538' W
Drop Point	DP-160	48° 35.888' N	115° 55.300' W
Drop Point	DP-162	48° 35.441' N	115° 54.993' W
Drop Point	DP-170	48° 37.077' N	115° 53.737' W
Drop Point	DP-175	48° 38.939' N	115° 52.683' W
Drop Point	DP-180	48° 33.990' N	115° 53.990' W
Drop Point	DP-185	48° 33.664' N	115° 51.401' W
Drop Point	DP-190	48° 33.384' N	115° 51.812' W
Drop Point	DP-201	48° 41.015' N	115° 51.188' W
Drop Point	DP-203	48° 40.526' N	115° 49.112' W
Drop Point	DP-205	48° 39.866' N	115° 47.043' W
Helibase	Troy Helibase	48° 28.803' N	115° 54.244' W
Helispot	H-151	48° 31.688' N	115° 55.034' W
Helispot	H-155	48° 33.431' N	115° 51.990' W
Helispot	H-Sylvanite	48° 43.614' N	115° 52.592' W
Staging Area	Staging Area	48° 32.232' N	115° 56.299' W
Staging Area	Staging Area	48° 34.915' N	115° 52.684' W
Staging Area	Sylvanite Staging	48° 43.426' N	115° 52.694' W
Water Development or Draft Site		48° 35.297' N	115° 55.438' W
Water Source	Water Source	48° 30.738' N	115° 55.529' W
Water Source	Water Source	48° 33.233' N	115° 53.477' W
Water Source	Water Source	48° 33.288' N	115° 53.208' W
Water Source	Water Source	48° 33.576' N	115° 50.771' W
Water Source	Water Source	48° 39.588' N	115° 46.070' W