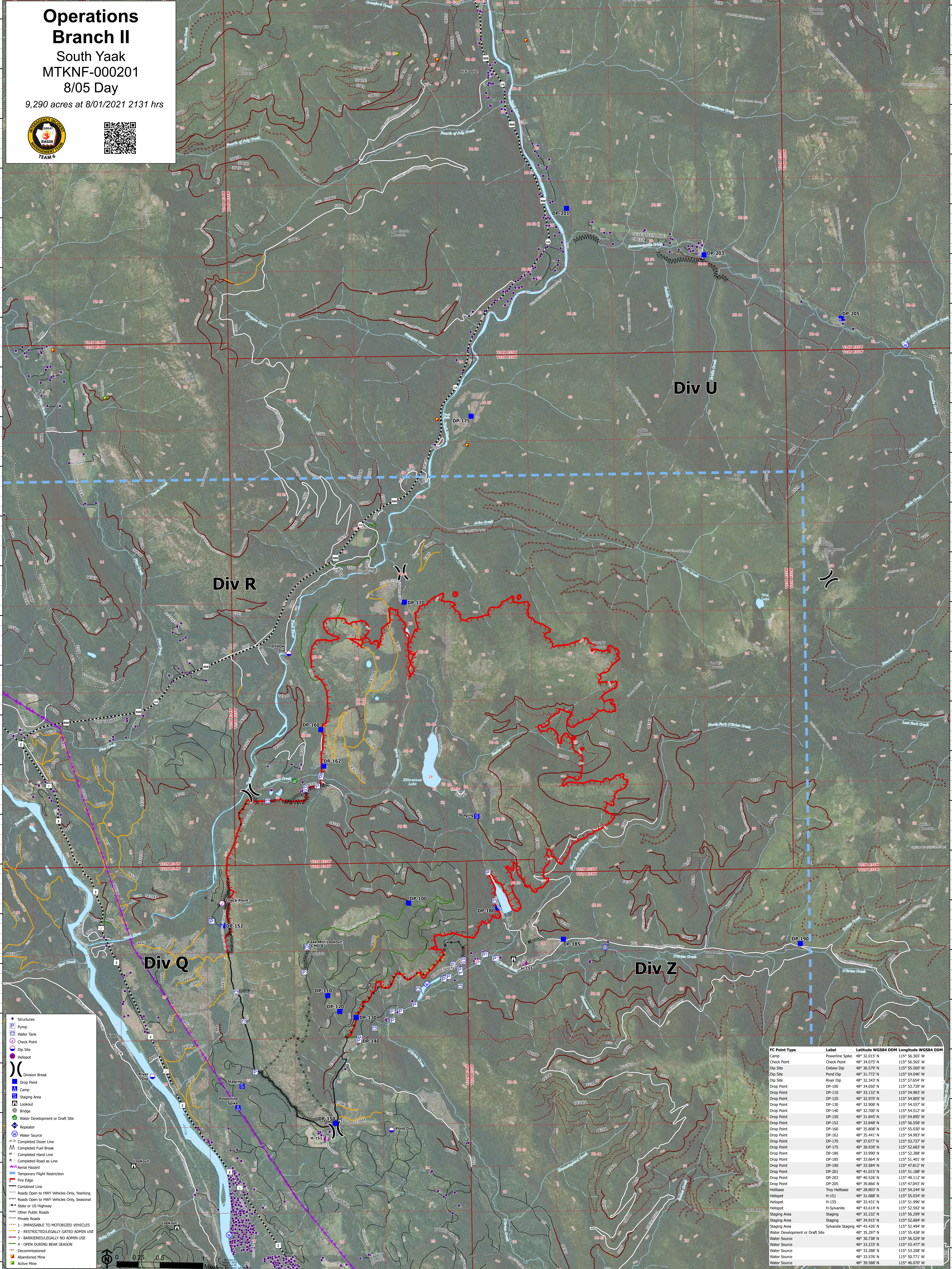


# Operations Branch II

South Yaak  
MTKNF-000201  
8/05 Day

9,290 acres at 8/01/2021 2131 hrs



	Structures
	Pump
	Water Tank
	Check Point
	Drop Site
	Helispot
	Division Break
	Drop Point
	Camp
	Staging Area
	Lookout
	Bridge
	Water Development or Draft Site
	Repeater
	Water Source
	Restricted Dozer Line
	Completed Fuel Break
	Completed Hand Line
	Completed Road as Line
	Aerial Hazard
	Temporary Flight Restriction
	Contained Line
	Roads Open to HWY Vehicles Only, Yearlong
	Roads Open to HWY Vehicles Only, Seasonal
	State or US Highway
	Other Public Roads
	Private Roads
	1 - IMPASSABLE TO MOTORIZED VEHICLES
	2 - RESTRICTED LEGALLY GATED ADMIN USE
	3 - BARE/REVISED LEGALLY NO ADMIN USE
	4 - OPEN DURING BEAR SEASON
	Abandoned Mine
	Active Mine

FC Point Type	Label	Latitude WGS84 DDM	Longitude WGS84 DDM
Camp	Powerline Spike	48° 32.015' N	115° 56.355' W
Check Point	Check Point	48° 34.075' N	115° 56.565' W
Dip Site	Oxbow Dip	48° 36.579' N	115° 55.500' W
Dip Site	Pond Dip	48° 31.772' N	115° 54.046' W
Drop Point	River Dip	48° 32.343' N	115° 57.654' W
Drop Point	DP-100	48° 34.050' N	115° 53.739' W
Drop Point	DP-110	48° 33.132' N	115° 54.883' W
Drop Point	DP-120	48° 32.979' N	115° 54.805' W
Drop Point	DP-130	48° 32.908' N	115° 54.557' W
Drop Point	DP-140	48° 32.700' N	115° 54.512' W
Drop Point	DP-150	48° 31.845' N	115° 54.895' W
Drop Point	DP-152	48° 33.848' N	115° 56.558' W
Drop Point	DP-160	48° 35.888' N	115° 55.500' W
Drop Point	DP-162	48° 35.441' N	115° 54.993' W
Drop Point	DP-170	48° 37.077' N	115° 53.737' W
Drop Point	DP-175	48° 38.939' N	115° 52.683' W
Drop Point	DP-180	48° 33.990' N	115° 52.388' W
Drop Point	DP-185	48° 33.664' N	115° 51.401' W
Drop Point	DP-190	48° 33.584' N	115° 51.782' W
Drop Point	DP-201	48° 41.015' N	115° 51.188' W
Drop Point	DP-203	48° 40.526' N	115° 49.112' W
Drop Point	DP-205	48° 39.866' N	115° 47.043' W
Helibase	Troy Helibase	48° 28.803' N	115° 54.244' W
Helispot	H-151	48° 31.688' N	115° 55.034' W
Helispot	H-155	48° 33.411' N	115° 55.990' W
Helispot	H-Sylvanite	48° 43.614' N	115° 52.592' W
Staging Area	Staging	48° 32.232' N	115° 56.299' W
Staging Area	Staging	48° 34.915' N	115° 52.684' W
Staging Area	Sylvanite Staging	48° 43.426' N	115° 52.494' W
Water Development or Draft Site		48° 35.297' N	115° 55.438' W
Water Source		48° 30.738' N	115° 55.529' W
Water Source		48° 33.233' N	115° 53.777' W
Water Source		48° 33.288' N	115° 53.208' W
Water Source		48° 33.576' N	115° 50.771' W
Water Source		48° 39.588' N	115° 46.070' W

