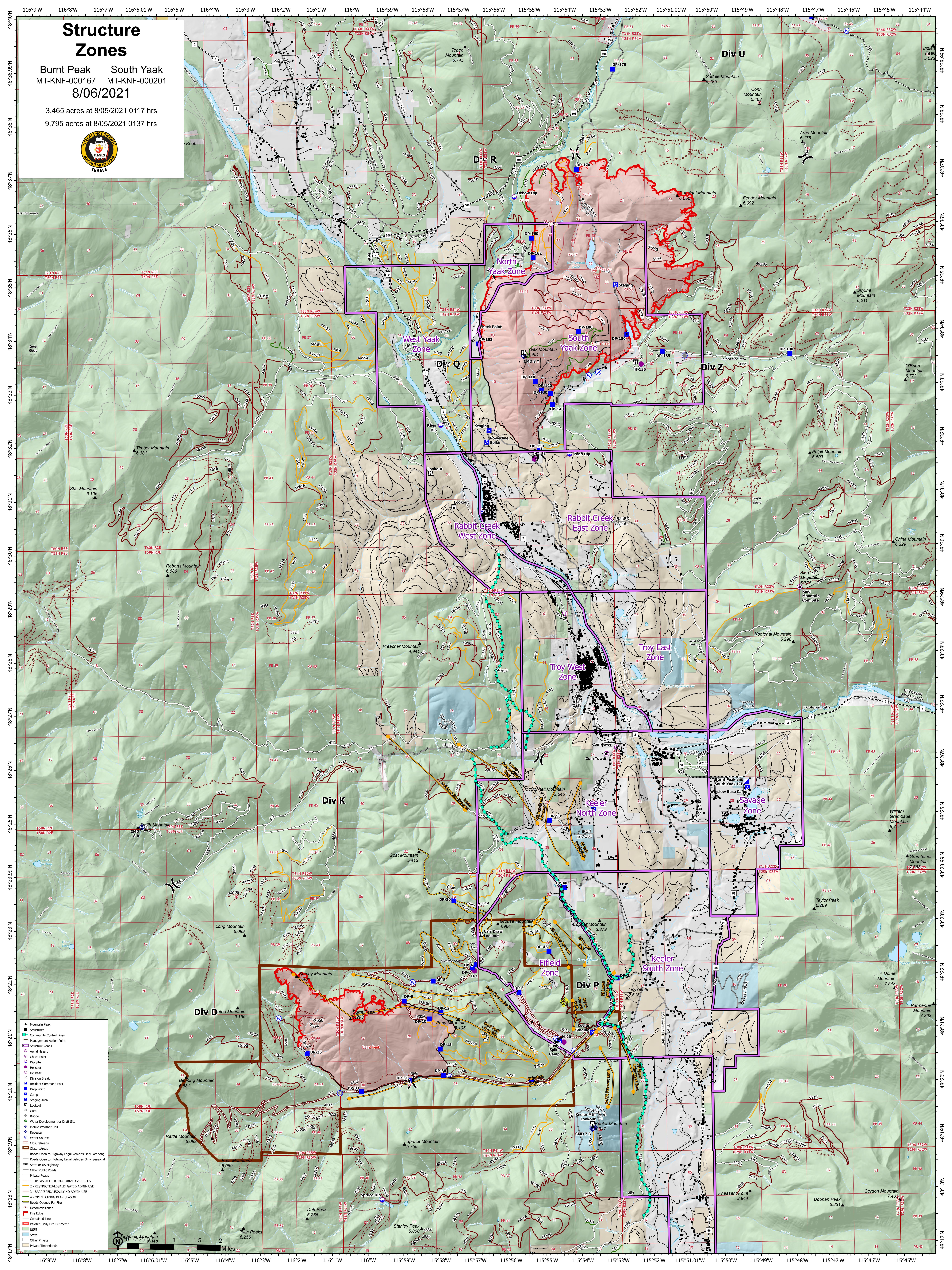


Structure Zones

Burnt Peak South Yaak
MT-KNF-000167 MT-KNF-000201
8/06/2021

3,465 acres at 8/05/2021 0117 hrs
9,795 acres at 8/05/2021 0137 hrs



Legend

- Mountain Peak
- Structure
- Community Control Lines
- Management Action Point
- Structure Zones
- Aerial Hazard
- Check Point
- Dip Site
- Helipoint
- Helibase
- Division Break
- Incident Command Post
- Drop Point
- Camp
- Staging Area
- Lookout
- Gate
- Bridge
- Water Development or Draft Site
- Mobile Weather Unit
- Repeater
- Water Source
- State
- Other Private
- Private Timbers

Roads

- Roads Open to Highway Legal Vehicles Only, Yearlong
- Roads Open to Highway Legal Vehicles Only, Seasonal
- State or US Highway
- Other Public Roads
- Private Roads

Impassability

- 1 - IMPASSABLE TO MOTORIZED VEHICLES
- 2 - RESTRICTED/LEGALLY GATED ADMIN USE
- 3 - BARRIERS/LEGALLY NO ADMIN USE
- 4 - OPEN DURING BEAR SEASON

Roads Opened for Fire

- Decommissioned
- Fire Edge
- Contained Line
- Wildfire Daily Fire Perimeter
- USFS
- Other Private

Scale

0 1 1.5 2 Miles