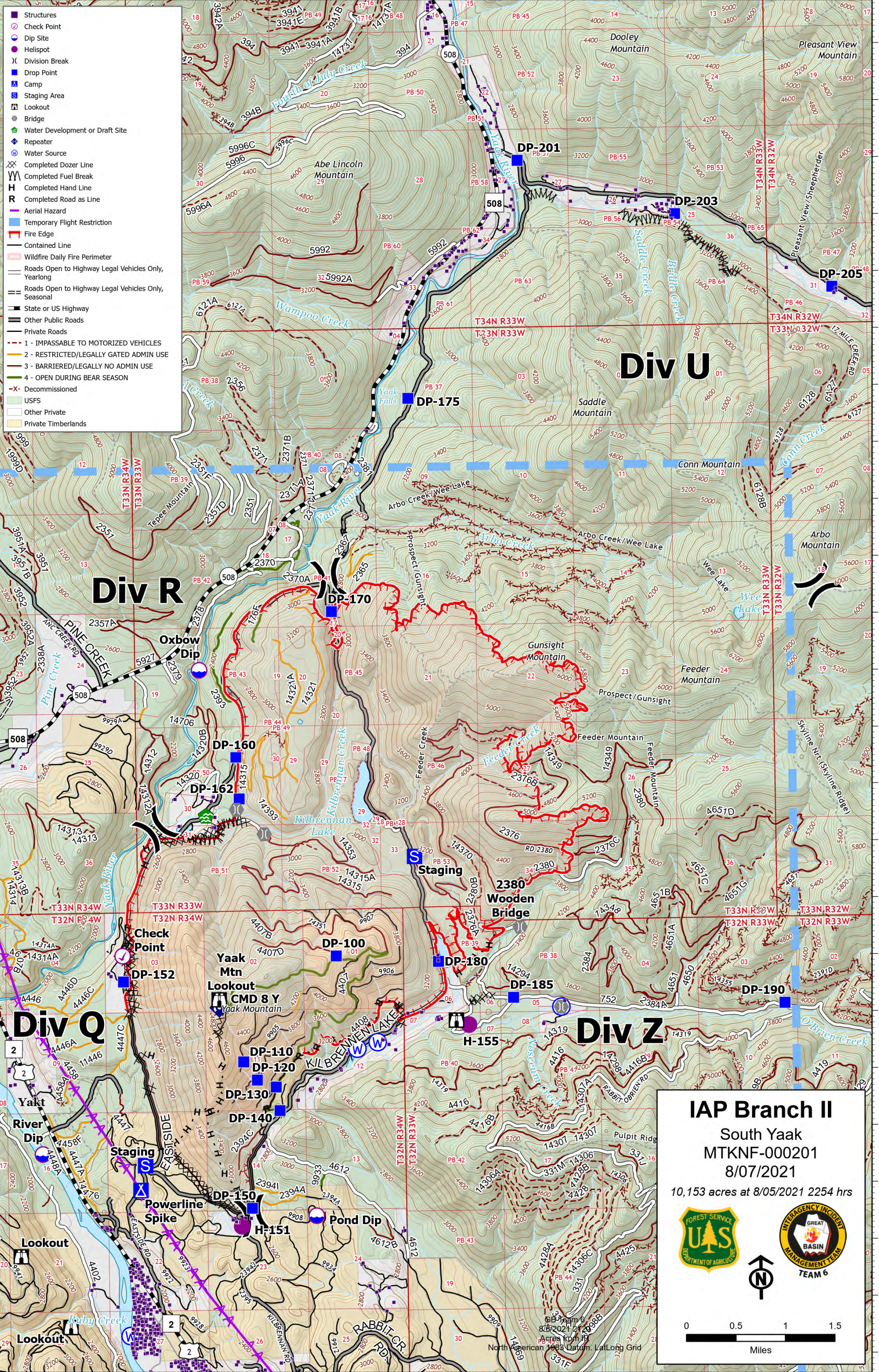




- Structures
- Check Point
- Dip Site
- Helispot
- ⌘ Division Break
- Drop Point
- ▲ Camp
- Staging Area
- Lookout
- Bridge
- Water Development or Draft Site
- Repeater
- Water Source
- ⌘ Completed Dozer Line
- ⌘ Completed Fuel Break
- ⌘ Completed Hand Line
- ⌘ Completed Road as Line
- Aerial Hazard
- Temporary Flight Restriction
- Fire Edge
- Contained Line
- Wildfire Daily Fire Perimeter
- Roads Open to Highway Legal Vehicles Only, Yearlong
- Roads Open to Highway Legal Vehicles Only, Seasonal
- State or US Highway
- Other Public Roads
- Private Roads
- 1 - IMPASSABLE TO MOTORIZED VEHICLES
- 2 - RESTRICTED/LEGALLY GATED ADMIN USE
- 3 - BARRIERED/LEGALLY NO ADMIN USE
- 4 - OPEN DURING BEAR SEASON
- ⌘ Decommissioned
- USFS
- Other Private
- Private Timberlands



IAP Branch II
 South Yaak
 MTKNF-000201
 8/07/2021
 10,153 acres at 8/05/2021 2254 hrs

0 0.5 1 1.5
Miles

BB Team 6
 8/6/2021 21:15
 Acres from IB
 North American 1983 Datum, Lat/Long Grid