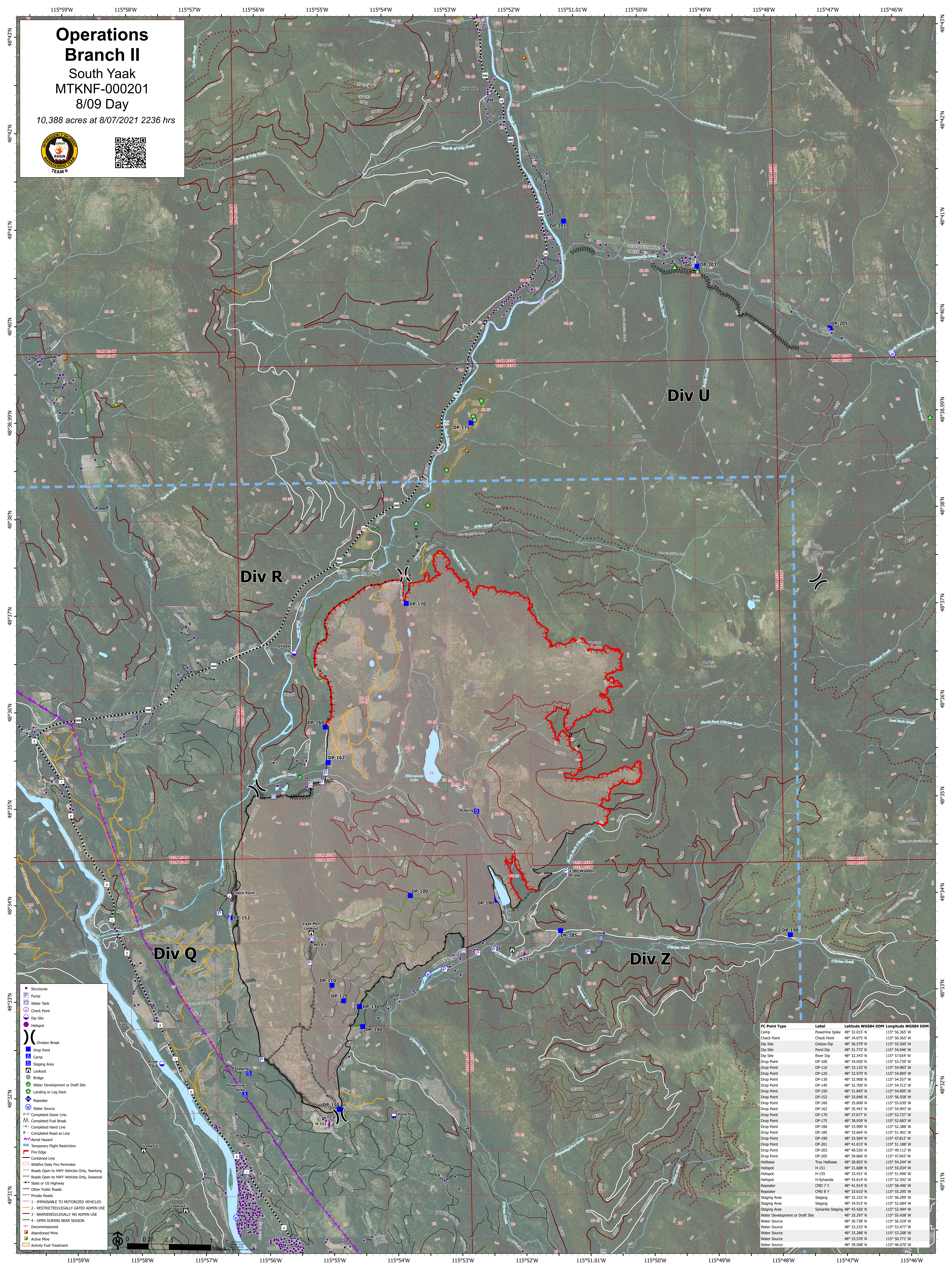


Operations Branch II

South Yaak
MTKNF-000201
8/09 Day

10,388 acres at 8/07/2021 2236 hrs



- Structures
- ⊕ Pump
- ⊕ Water Tank
- ⊕ Check Point
- ⊕ Dip Site
- ⊕ Helispot
- ⊕ Division Break
- ⊕ Drop Point
- ⊕ Camp
- ⊕ Staging Area
- ⊕ Lookout
- ⊕ Bridge
- ⊕ Water Development or Draft Site
- ⊕ Landing or Log Deck
- ⊕ Repeater
- ⊕ Water Source
- ⊕ Completed Over Line
- ⊕ Completed Fuel Break
- ⊕ BARRIERS/LEGALLY NO ADMIN USE
- ⊕ OPEN DURING BEAR SEASON
- ⊕ Completed Road as Line
- ⊕ Aerial Hazard
- ⊕ Temporary Flight Restriction
- ⊕ Fire Edge
- ⊕ Contained Line
- ⊕ Wildlife Daily Fire Perimeter
- ⊕ Roads Open to H/VV Vehicles Only, Yearlong
- ⊕ Roads Open to H/VV Vehicles Only, Seasonal
- ⊕ State or US Highway
- ⊕ Other Public Roads
- ⊕ Private Roads
- ⊕ 1 - IMPASSABLE TO MOTORIZED VEHICLES
- ⊕ 2 - RESTRICTED/LEGALLY GATED ADMIN USE
- ⊕ 3 - BARRIERS/LEGALLY NO ADMIN USE
- ⊕ 4 - OPEN DURING BEAR SEASON
- ⊕ Decommissioned
- ⊕ Abandoned Mine
- ⊕ Active Mine
- ⊕ Activity Fuel Treatment

FC Point Type	Label	Latitude WGS84 DDM	Longitude WGS84 DDM
Camp	Powerline Spike	48° 32.015' N	115° 56.365' W
Check Point	Check Point	48° 34.075' N	115° 56.565' W
Dip Site	Oxbow Dip	48° 36.579' N	115° 55.500' W
Dip Site	Pond Dip	48° 31.772' N	115° 54.066' W
Dip Site	River Dip	48° 32.343' N	115° 57.654' W
Drop Point	DP-100	48° 34.050' N	115° 53.739' W
Drop Point	DP-110	48° 33.132' N	115° 54.983' W
Drop Point	DP-120	48° 32.970' N	115° 54.895' W
Drop Point	DP-140	48° 32.700' N	115° 54.512' W
Drop Point	DP-150	48° 31.845' N	115° 54.895' W
Drop Point	DP-152	48° 33.848' N	115° 56.558' W
Drop Point	DP-160	48° 35.808' N	115° 55.030' W
Drop Point	DP-162	48° 35.441' N	115° 54.993' W
Drop Point	DP-170	48° 37.677' N	115° 53.774' W
Drop Point	DP-175	48° 38.939' N	115° 52.683' W
Drop Point	DP-180	48° 33.990' N	115° 52.988' W
Drop Point	DP-185	48° 33.664' N	115° 51.401' W
Drop Point	DP-190	48° 33.584' N	115° 47.812' W
Drop Point	DP-201	48° 41.015' N	115° 51.188' W
Drop Point	DP-203	48° 40.536' N	115° 49.112' W
Drop Point	DP-205	48° 39.866' N	115° 47.843' W
Helibase	Troy Helibase	48° 28.803' N	115° 54.244' W
Helispot	H-151	48° 31.688' N	115° 55.034' W
Helispot	H-155	48° 33.431' N	115° 51.996' W
Helispot	H-Sylvante	48° 43.614' N	115° 52.592' W
Repeater	CMD 2 Y	48° 41.914' N	115° 58.960' W
Repeater	CMD 8 Y	48° 33.610' N	115° 55.295' W
Staging Area	Staging	48° 32.232' N	115° 56.299' W
Staging Area	Staging	48° 34.915' N	115° 52.684' W
Staging Area	Sylvante Staging	48° 43.425' N	115° 52.494' W
Water Development or Draft Site		48° 35.297' N	115° 55.438' W
Water Source		48° 30.738' N	115° 56.529' W
Water Source		48° 33.233' N	115° 53.477' W
Water Source		48° 33.288' N	115° 53.208' W
Water Source		48° 33.576' N	115° 50.771' W
Water Source		48° 39.588' N	115° 46.070' W

