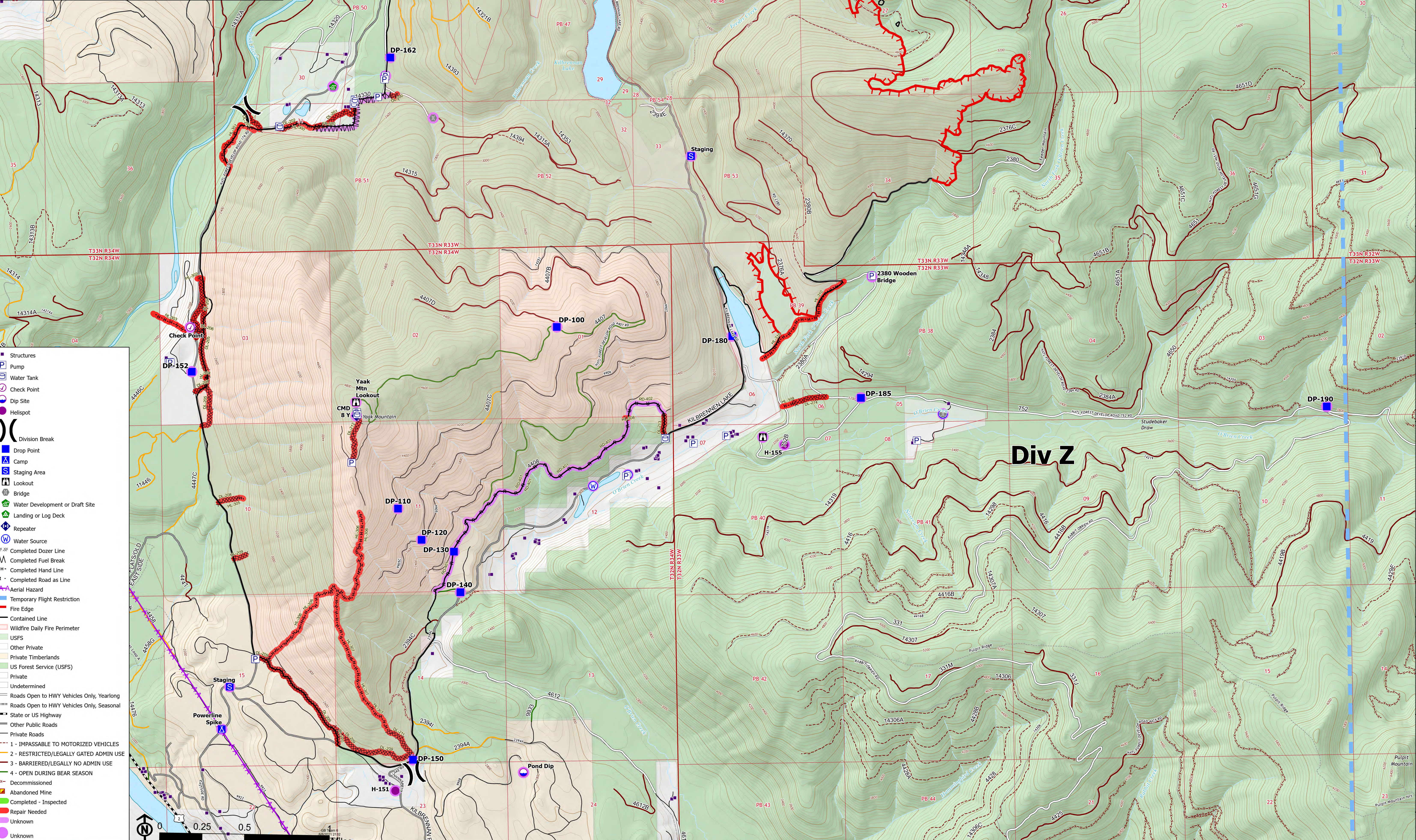


Suppression Repair Branch II South Yaak MTKNF-000201 8/09 Day 10,388 acres at 8/07/2021 2236 hrs



FC Point Type	Label	Comments	Repair Status	Repair Comments
Bridge		Wood deck and abutments	Unknown	
Bridge		Metal Bridge	Unknown	
Bridge		Good solid bridge	Unknown	
Bridge	2380 Wooden Bridge	Wooden Bridge brushed with sprinker kit in place	Unknown	
Camp	Powerline Spike		Unknown	
Check Point		Requested/Approved by DVS T/U	Unknown	
Dip Site	Outbow Dip	2160' elevation	Unknown	
Dip Site	Pond Dip	2720' elevation	Unknown	
Dip Site	River Dip	1840' elevation	Unknown	
Drop Point	DP-100	Lowboy turn around	Unknown	
Drop Point	DP-110		Unknown	
Drop Point	DP-120		Unknown	
Drop Point	DP-130		Unknown	
Drop Point	DP-140		Unknown	
Drop Point	DP-150		Unknown	
Drop Point	DP-152		Unknown	
Drop Point	DP-160		Unknown	
Drop Point	DP-162		Unknown	
Drop Point	DP-170		Unknown	
Drop Point	DP-175		Unknown	
Drop Point	DP-180		Unknown	
Drop Point	DP-185		Unknown	
Drop Point	DP-190		Unknown	
Drop Point	DP-201		Unknown	
Drop Point	DP-203		Unknown	
Drop Point	DP-205		Unknown	
Helispot	H-151	2800' elevation	Unknown	
Helispot	H-155	3200' elevation; HAZAROUS; tall trees	Unknown	
Landing or Log Deck			Unknown	
Landing or Log Deck			Unknown	
Landing or Log Deck			Unknown	
Landing or Log Deck			Unknown	
Lookout			Unknown	
Lookout			Unknown	
Lookout	Yaak Mtn Lookout		Unknown	
Repeater	CHD 8 Y	Yaak Mountain Lookout, updated 0804	Unknown	
Staging Area			Unknown	
Staging Area		Parking for transports 4-4; Lowboy parking room for 2 to 3 lowboys	Unknown	
Water Development or Draft Site		Shallow. Needs to be dammed to increase usable volume.	Unknown	
Water Source		Needs pump	Unknown	
Water Source		Draft site	Unknown	
Water Source		Possible draft site	Unknown	

FC Line Type	Label	Repair Status	Comments	Repair Comments
Completed Dozer Line	DL-200	Repair Needed	Around large log deck/pile	
Completed Dozer Line	DL-201	Repair Needed	Primary line around structures on East side road. Dozer line on the east and west ends with handling in the middle.	
Completed Dozer Line	DL-202	Repair Needed	Primary line around structures on East side road. Dozer line on the east and west ends with handling in the middle.	
Completed Dozer Line	DL-203	Repair Needed		
Completed Dozer Line	DL-204	Repair Needed	Dead end without tie in. Upiles.	
Completed Dozer Line	DL-205	Repair Needed		
Completed Dozer Line	DL-206	Repair Needed		
Completed Dozer Line	DL-207	Repair Needed		
Completed Dozer Line	DL-208	Repair Needed		
Completed Dozer Line	DL-209	Repair Needed		
Completed Dozer Line	DL-209	Repair Needed		
Completed Dozer Line	DL-210	Repair Needed		
Completed Dozer Line	DL-211	Repair Needed		
Completed Dozer Line	DL-212	Repair Needed		
Completed Dozer Line	DL-213	Repair Needed		
Completed Dozer Line	DL-214	Repair Needed		
Completed Fuel Break	FB-500	Unknown	logged out approx. 25 feet towards interior of fire, but not bare earth dozer line	
Completed Fuel Break	FB-501	Unknown	30' fuel break, mastication	
Completed Fuel Break	FB-502	Unknown	100-150' shaded fuel break	
Completed Fuel Break	FB-503	Unknown	30' fuel break, excavator dug	
Completed Hand Line	HL-300	Repair Needed	Primary line around structures on East side road. Dozer line on the east and west ends with handling in the middle.	
Completed Hand Line	HL-301	Repair Needed	Follows fire edge of slope over.	Northern half of hand line was pre-existing. Likely for a prescribed fire unit.
Completed Hand Line	HL-302	Repair Needed		
Completed Hand Line	HL-303	Repair Needed		
Completed Hand Line	HL-304	Repair Needed		
Completed Hand Line	HL-305	Repair Needed		
Completed Hand Line	HL-306	Repair Needed		
Completed Hand Line	HL-307	Repair Needed		
Completed Hand Line	HL-308	Repair Needed		
Completed Hand Line	HL-309	Repair Needed		
Completed Hand Line	HL-310	Repair Needed		
Completed Road as Line		Unknown		
Completed Road as Line	RD-400	Completed - Inspected	saw prep approx. 30'	
Completed Road as Line	RD-401	Unknown	4408 road	
Completed Road as Line	RD-402	Unknown		



- Structures
- Pump
- Water Tank
- Check Point
- Dip Site
- Helispot
- Division Break
- Drop Point
- Camp
- Staging Area
- Lookout
- Bridge
- Water Development or Draft Site
- Repeater
- Water Source
- Completed Dozer Line
- Completed Fuel Break
- Completed Hand Line
- Completed Road as Line
- Aerial Hazard
- Temporary Flight Restriction
- Fire Edge
- Contained Line
- Wildfire Daily Fire Perimeter
- USFS
- Other Private
- Private Timberlands
- US Forest Service (USFS)
- Private
- Undetermined
- Roads Open to HWY Vehicles Only, Yearlong
- Roads Open to HWY Vehicles Only, Seasonal
- State or US Highway
- Other Public Roads
- Private Roads
- 1 - IMPASSIBLE TO MOTORIZED VEHICLES
- 2 - RESTRICTED/LEGALLY GATED ADMIN USE
- 3 - BARRIER/LEGALLY NO ADMIN USE
- 4 - OPEN DURING BEAR SEASON
- Decommissioned
- Abandoned Mine
- Completed - Inspected
- Repair Needed
- Unknown
- Unknown