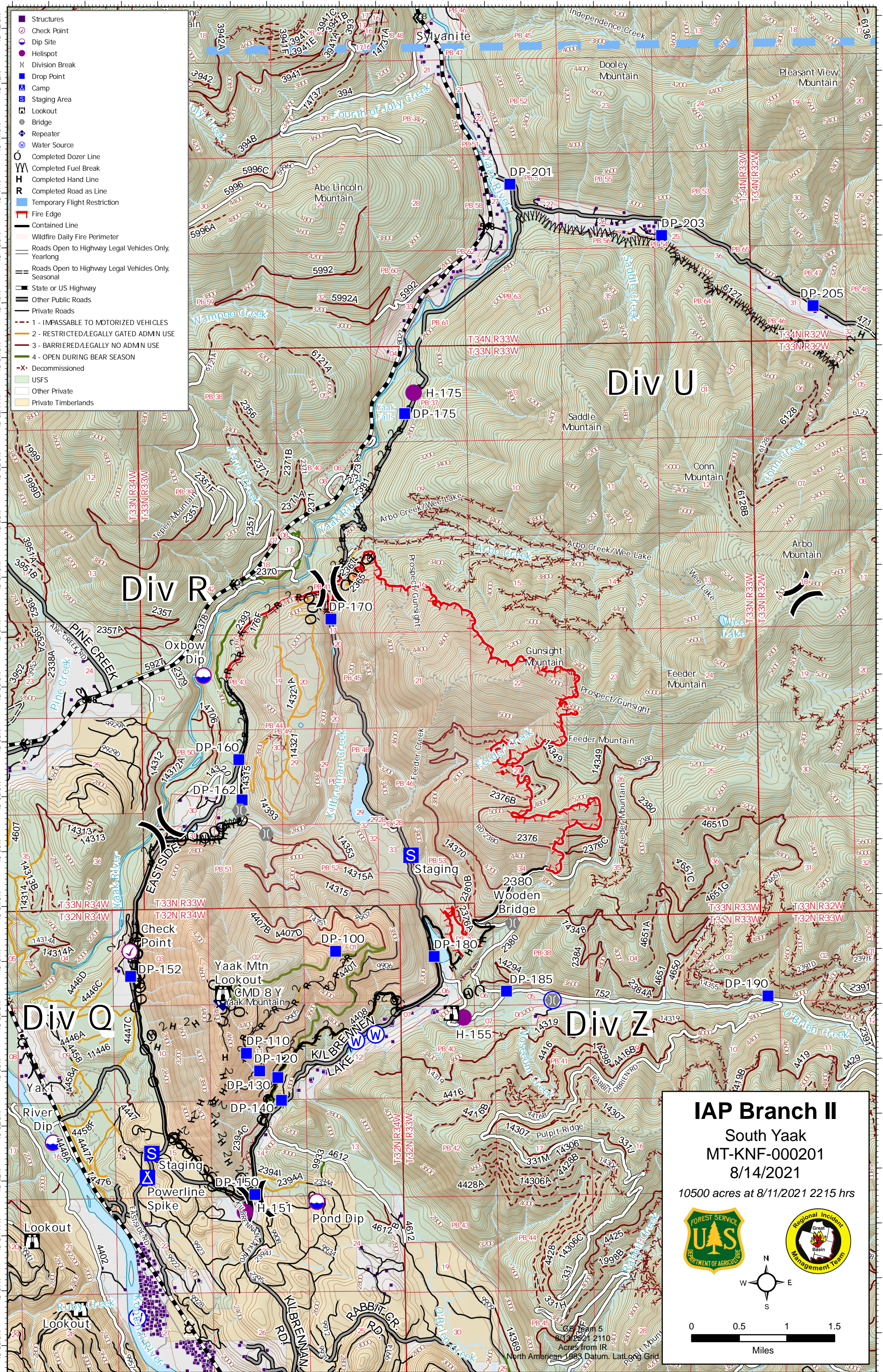


- Structures
- Check Point
- Dip Site
- Hellspot
- Division Break
- Drop Point
- Camp
- Staging Area
- Lookout
- Bridge
- Repeater
- Water Source
- Completed Dozer Line
- Completed Fuel Break
- Completed Hand Line
- Completed Road as Line
- Temporary Flight Restriction
- Fire Edge
- Contained Line
- Wildfire Daily Fire Perimeter
- Roads Open to Highway Legal Vehicles Only, Yearlong
- Roads Open to Highway Legal Vehicles Only, Seasonal
- State or US Highway
- Other Public Roads
- Private Roads
- 1 - IMPASSABLE TO MOTORIZED VEHICLES
- 2 - RESTRICTED/LEGALLY GATED ADMN USE
- 3 - BARRIERED/LEGALLY NO ADMN USE
- 4 - OPEN DURING BEAR SEASON
- Decommissioned
- USFS
- Other Private
- Private Timberlands



## IAP Branch II

South Yaak  
MT-KNF-000201  
8/14/2021

10500 acres at 8/11/2021 2215 hrs

0 0.5 1 1.5  
Miles

North American 1983 Datum, Lat/Long Grid