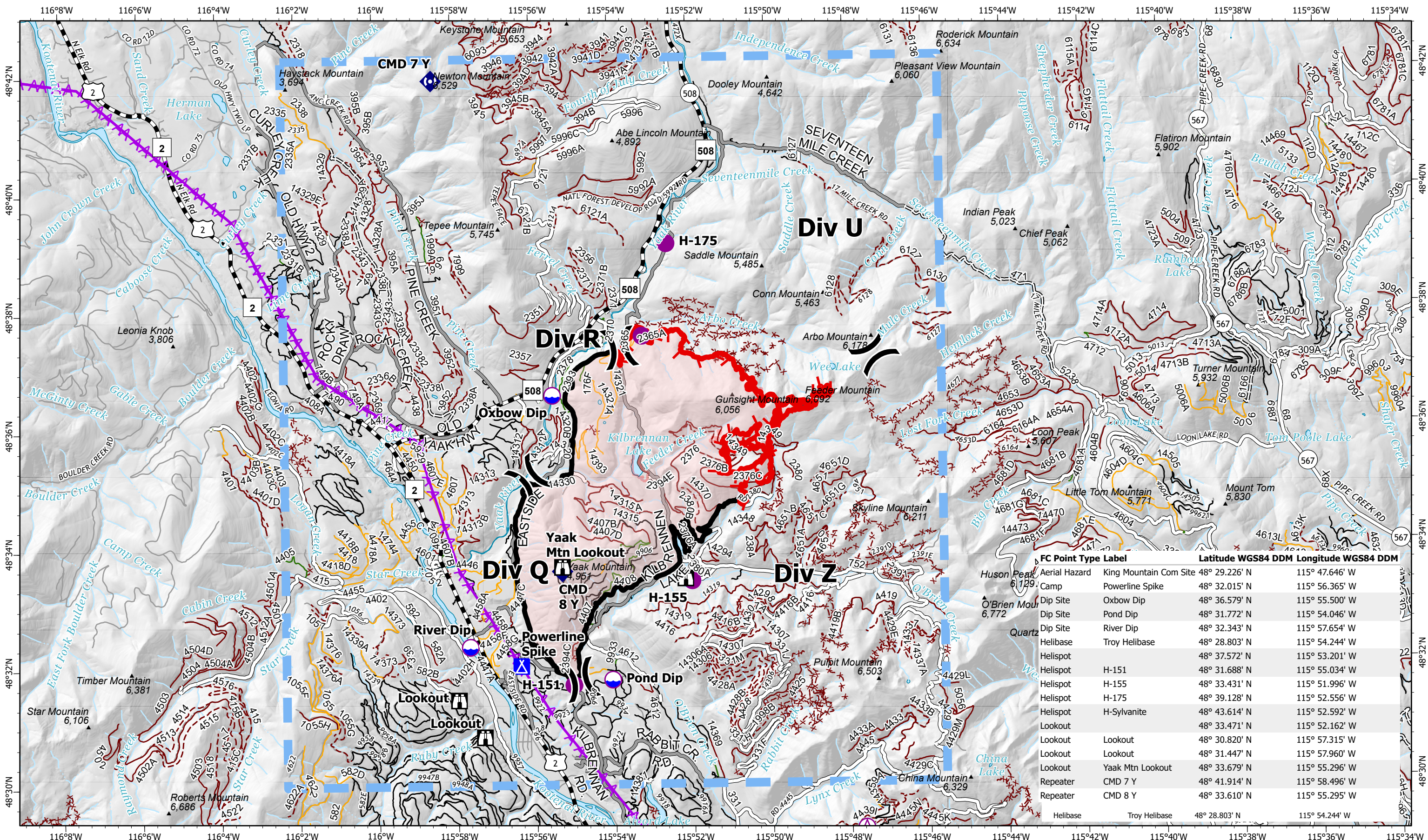


PILOT MAP

SOUTH YAAK

MT-KNF-000201

8/19/2021



FC Point Type Label	Latitude WGS84 DDM	Longitude WGS84 DDM
Huson Peak Aerial Hazard	48° 29.226' N	115° 47.646' W
O'Brien Mtn Dip Site	48° 32.015' N	115° 56.365' W
Quartz Dip Site	48° 31.772' N	115° 54.046' W
Helibase Troy Helibase	48° 28.803' N	115° 54.244' W
Helispot	48° 37.572' N	115° 53.201' W
Helispot H-151	48° 31.688' N	115° 55.034' W
Helispot H-155	48° 33.431' N	115° 51.996' W
Helispot H-175	48° 39.128' N	115° 52.556' W
Helispot H-Sylvanite	48° 43.614' N	115° 52.592' W
Lookout	48° 33.471' N	115° 52.162' W
Lookout	48° 30.820' N	115° 57.315' W
Lookout	48° 31.447' N	115° 57.960' W
Lookout Yaak Mtn Lookout	48° 33.679' N	115° 55.296' W
Repeater CMD 7 Y	48° 41.914' N	115° 58.496' W
Repeater CMD 8 Y	48° 33.610' N	115° 55.295' W
Helibase Troy Helibase	48° 28.803' N	115° 54.244' W

11585 est. acres
Acres from IR 8/15/2021 2136 hrs

2 Miles

Mountain Peak	Division Break	Repeater	Fire Edge	Roads Open to Highway	State or US Highway	1 - IMPASSABLE TO MOTORIZED VEHICLES	4 - OPEN DURING BEAR SEASON
Aerial Hazard	Camp	Aerial Hazard Temporary Flight Restriction	Contained Line	Roads Open to Highway Yearlong	Other Public Roads	2 - RESTRICTED/LEGALLY GATED ADMIN USE	Wildfire Daily Fire Perimeter
Dip Site	Lookout		Decommissioned	Roads Open to Highway Seasonal	Private Roads	3 - BARRIERED/LEGALLY NO ADMIN USE	