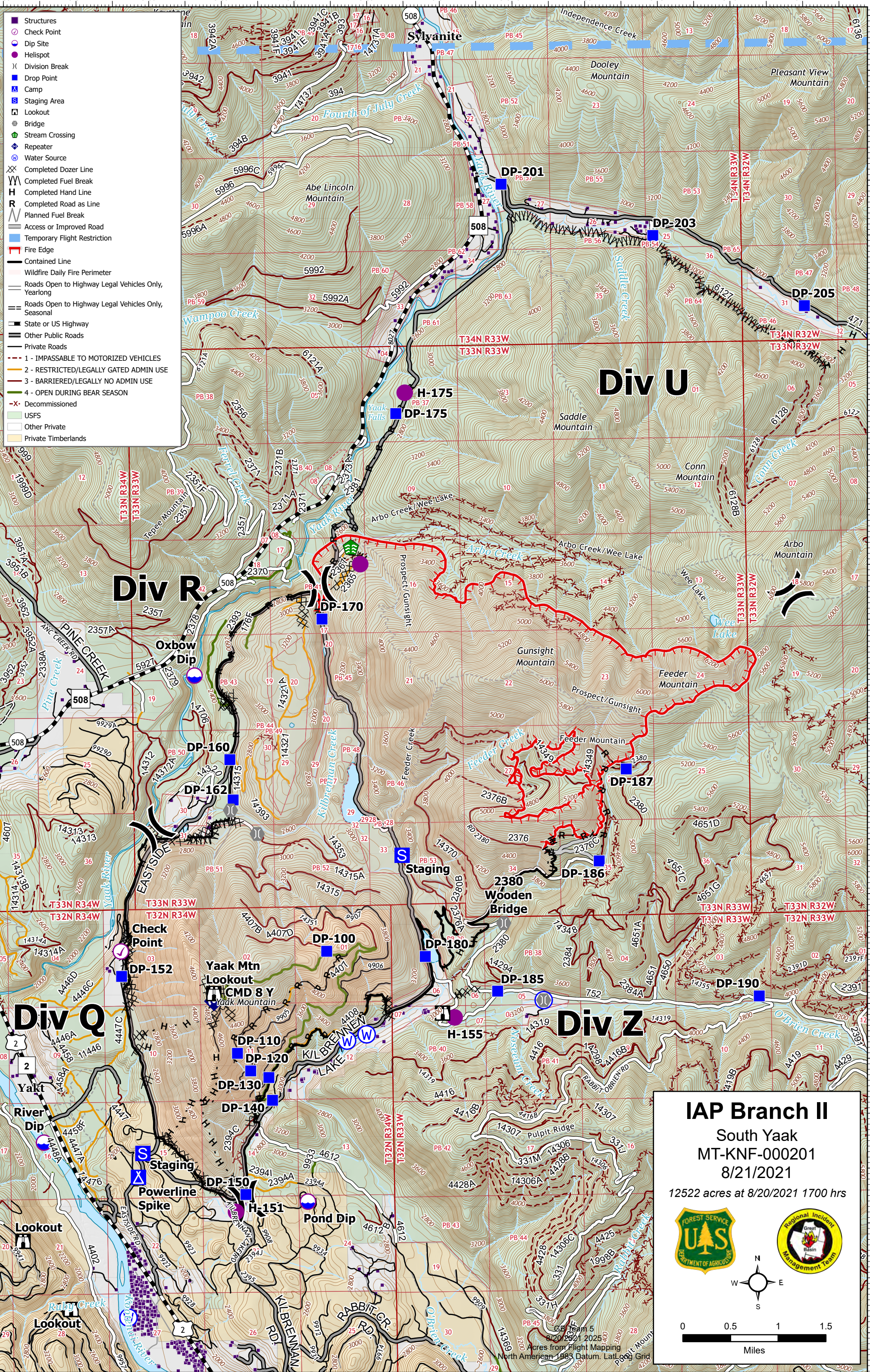


- Structures
- Check Point
- Dip Site
- Helispot
- Division Break
- Drop Point
- Camp
- Staging Area
- Lookout
- Bridge
- Stream Crossing
- Repeater
- Water Source
- Completed Dozer Line
- Completed Fuel Break
- Completed Hand Line
- Completed Road as Line
- Planned Fuel Break
- Access or Improved Road
- Temporary Flight Restriction
- Fire Edge
- Contained Line
- Wildfire Daily Fire Perimeter
- Roads Open to Highway Legal Vehicles Only, Yearlong
- Roads Open to Highway Legal Vehicles Only, Seasonal
- State or US Highway
- Other Public Roads
- Private Roads
- 1 - IMPASSABLE TO MOTORIZED VEHICLES
- 2 - RESTRICTED/LEGALLY GATED ADMIN USE
- 3 - BARRIERED/LEGALLY NO ADMIN USE
- 4 - OPEN DURING BEAR SEASON
- Decommissioned
- USFS
- Other Private
- Private Timberlands



IAP Branch II

South Yaak
MT-KNF-000201
8/21/2021

12522 acres at 8/20/2021 1700 hrs

0 0.5 1 1.5
Miles

Acres from Flight Mapping
North American 1983 Datum, Lat Long Grid