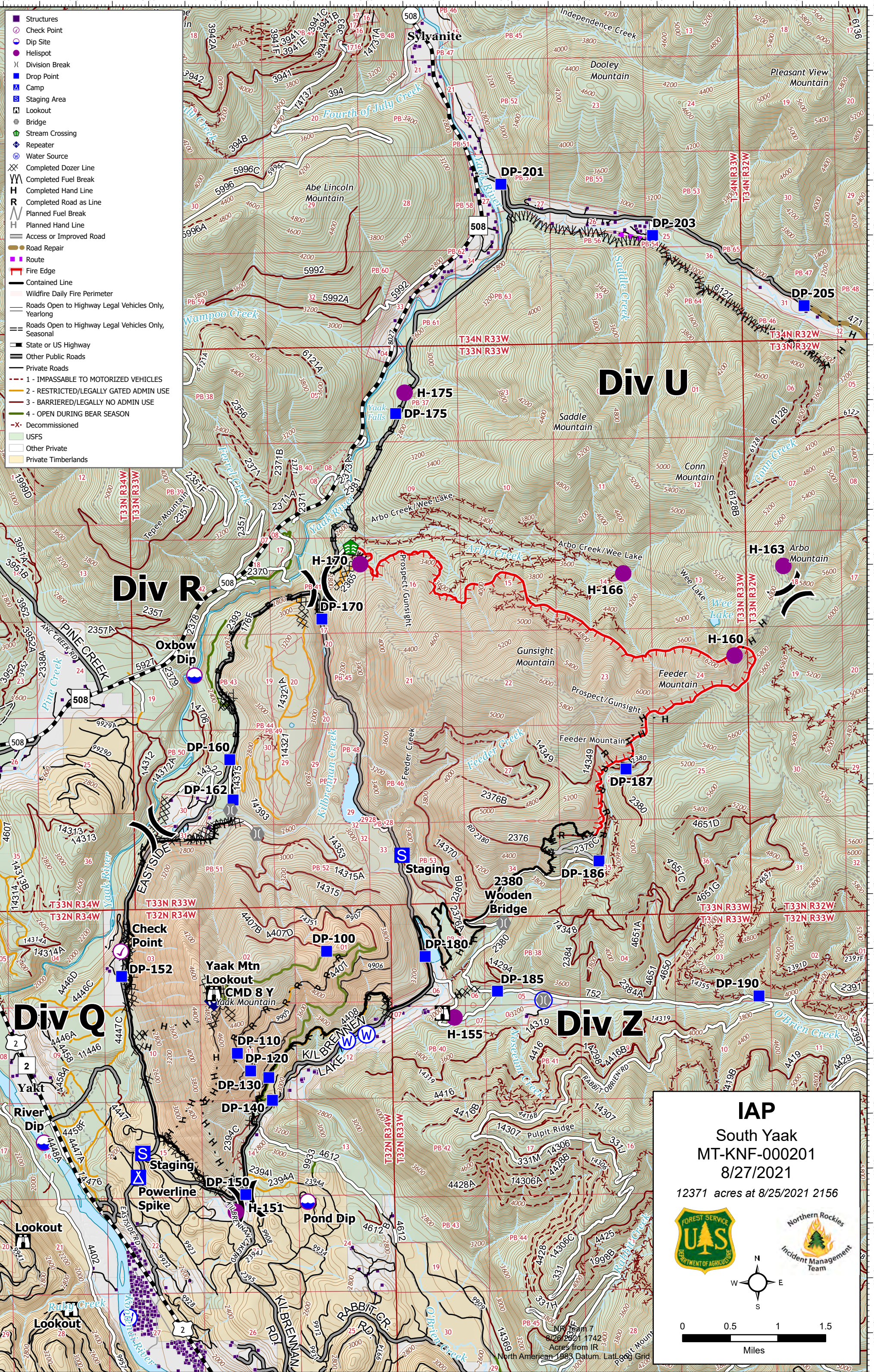


- Structures
- Check Point
- Dip Site
- Helispot
- () Division Break
- Drop Point
- ▲ Camp
- Staging Area
- Lookout
- Bridge
- ◆ Stream Crossing
- ◆ Repeater
- Water Source
- XX Completed Dozer Line
- YY Completed Fuel Break
- H Completed Hand Line
- R Completed Road as Line
- H Planned Fuel Break
- H Planned Hand Line
- Access or Improved Road
- Road Repair
- Route
- Fire Edge
- Contained Line
- Wildfire Daily Fire Perimeter
- Roads Open to Highway Legal Vehicles Only, Yearlong
- Roads Open to Highway Legal Vehicles Only, Seasonal
- State or US Highway
- Other Public Roads
- Private Roads
- 1 - IMPASSABLE TO MOTORIZED VEHICLES
- 2 - RESTRICTED/LEGALLY GATED ADMIN USE
- 3 - BARRIERED/LEGALLY NO ADMIN USE
- 4 - OPEN DURING BEAR SEASON
- X- Decommissioned
- USFS
- Other Private
- Private Timberlands



IAP
 South Yaak
 MT-KNF-000201
 8/27/2021
 12371 acres at 8/25/2021 2156

0 0.5 1 1.5
Miles

North American 1983 Datum, Lat Long Grid