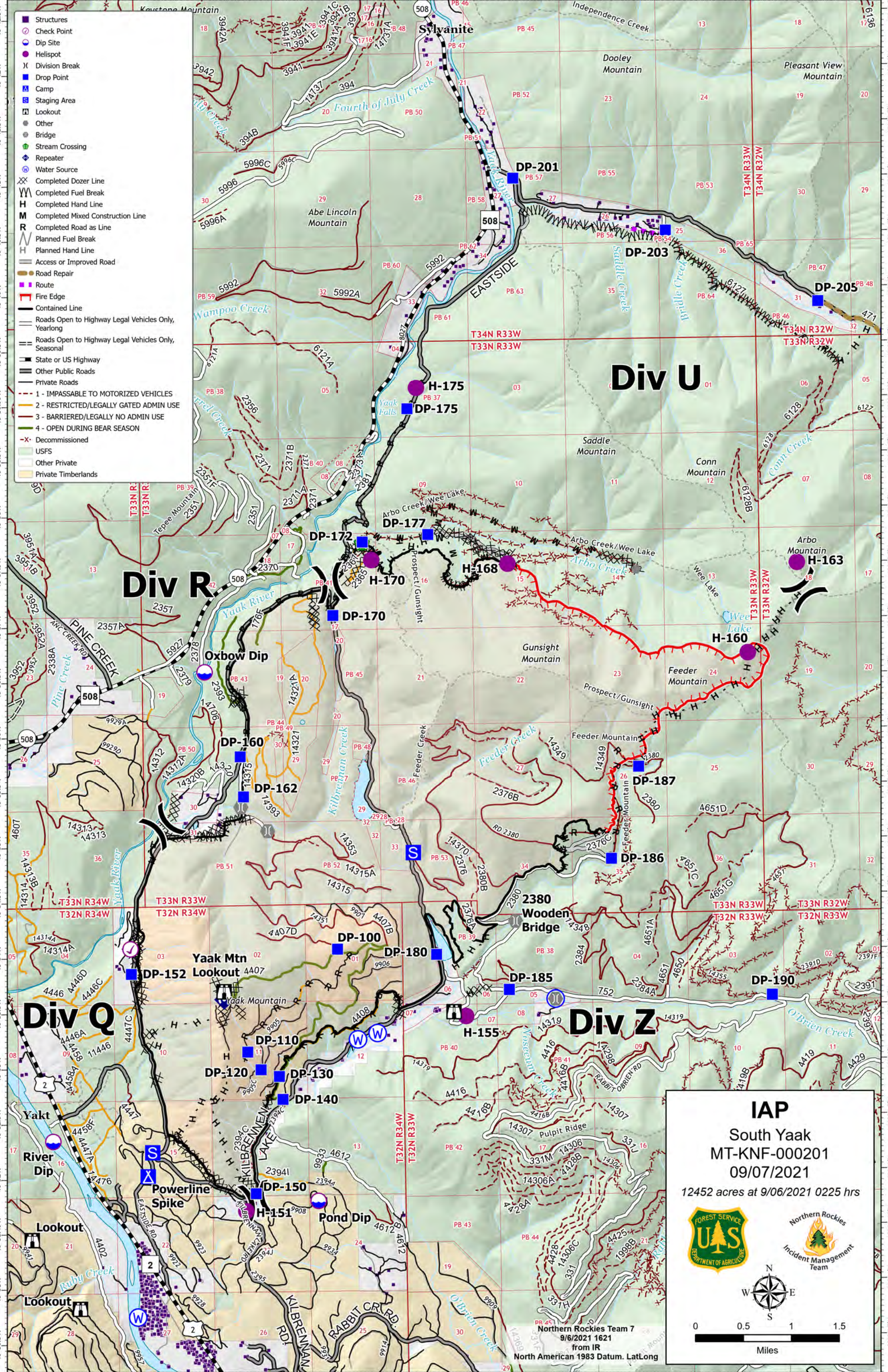





- Structures
- Check Point
- Dip Site
- Helispot
- ⌋ Division Break
- Drop Point
- Ⓜ Camp
- Ⓜ Staging Area
- Ⓜ Lookout
- Other
- Bridge
- Stream Crossing
- Repeater
- Water Source
- Ⓜ Completed Dozer Line
- Ⓜ Completed Fuel Break
- Ⓜ Completed Hand Line
- Ⓜ Completed Mixed Construction Line
- Ⓜ Completed Road as Line
- Ⓜ Planned Fuel Break
- Ⓜ Planned Hand Line
- Ⓜ Access or Improved Road
- Ⓜ Road Repair
- Ⓜ Route
- Ⓜ Fire Edge
- Ⓜ Contained Line
- Ⓜ Roads Open to Highway Legal Vehicles Only, Yearlong
- Ⓜ Roads Open to Highway Legal Vehicles Only, Seasonal
- Ⓜ State or US Highway
- Ⓜ Other Public Roads
- Ⓜ Private Roads
- Ⓜ 1 - IMPASSABLE TO MOTORIZED VEHICLES
- Ⓜ 2 - RESTRICTED/LEGALLY GATED ADMIN USE
- Ⓜ 3 - BARRIERED/LEGALLY NO ADMIN USE
- Ⓜ 4 - OPEN DURING BEAR SEASON
- Ⓜ Decommissioned
- Ⓜ USFS
- Ⓜ Other Private
- Ⓜ Private Timberlands



**IAP**  
 South Yaak  
 MT-KNF-000201  
 09/07/2021  
 12452 acres at 9/06/2021 0225 hrs



0 0.5 1 1.5  
Miles

Northern Rockies Team 7  
 9/6/2021 1621  
 from IR  
 North American 1983 Datum. LatLong