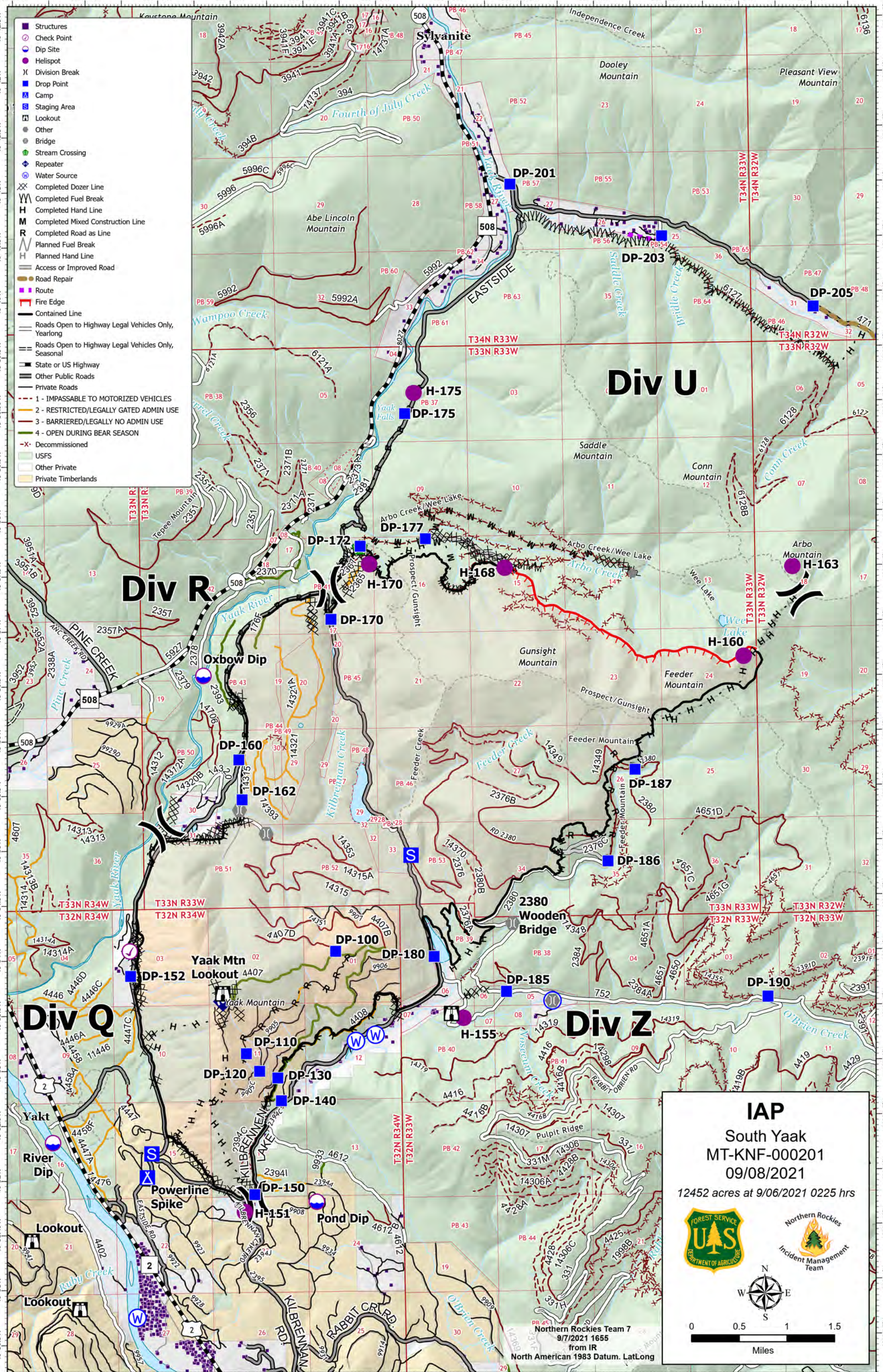





- Structures
- Check Point
- Dip Site
- Helispot
- ⌘ Division Break
- Drop Point
- Ⓧ Camp
- Ⓧ Staging Area
- Ⓧ Lookout
- Ⓧ Other
- Ⓧ Bridge
- Ⓧ Stream Crossing
- Ⓧ Repeater
- Ⓧ Water Source
- Ⓧ Completed Dozer Line
- Ⓧ Completed Fuel Break
- Ⓧ Completed Hand Line
- Ⓧ Completed Mixed Construction Line
- Ⓧ Completed Road as Line
- Ⓧ Planned Fuel Break
- Ⓧ Planned Hand Line
- Ⓧ Access or Improved Road
- Ⓧ Road Repair
- Ⓧ Route
- Ⓧ Fire Edge
- Ⓧ Contained Line
- Ⓧ Roads Open to Highway Legal Vehicles Only, Yearlong
- Ⓧ Roads Open to Highway Legal Vehicles Only, Seasonal
- Ⓧ State or US Highway
- Ⓧ Other Public Roads
- Ⓧ Private Roads
- Ⓧ 1 - IMPASSABLE TO MOTORIZED VEHICLES
- Ⓧ 2 - RESTRICTED/LEGALLY GATED ADMIN USE
- Ⓧ 3 - BARRIERED/LEGALLY NO ADMIN USE
- Ⓧ 4 - OPEN DURING BEAR SEASON
- Ⓧ Decommissioned
- Ⓧ USFS
- Ⓧ Other Private
- Ⓧ Private Timberlands



IAP
 South Yaak
 MT-KNF-000201
 09/08/2021
 12452 acres at 9/06/2021 0225 hrs



0 0.5 1 1.5
Miles

Northern Rockies Team 7
 9/7/2021 1655
 from IR
 North American 1983 Datum. LatLong